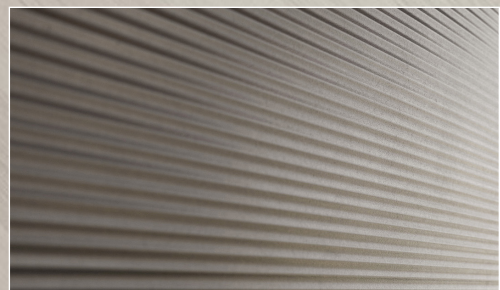
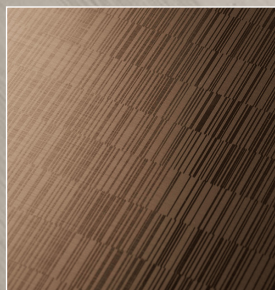
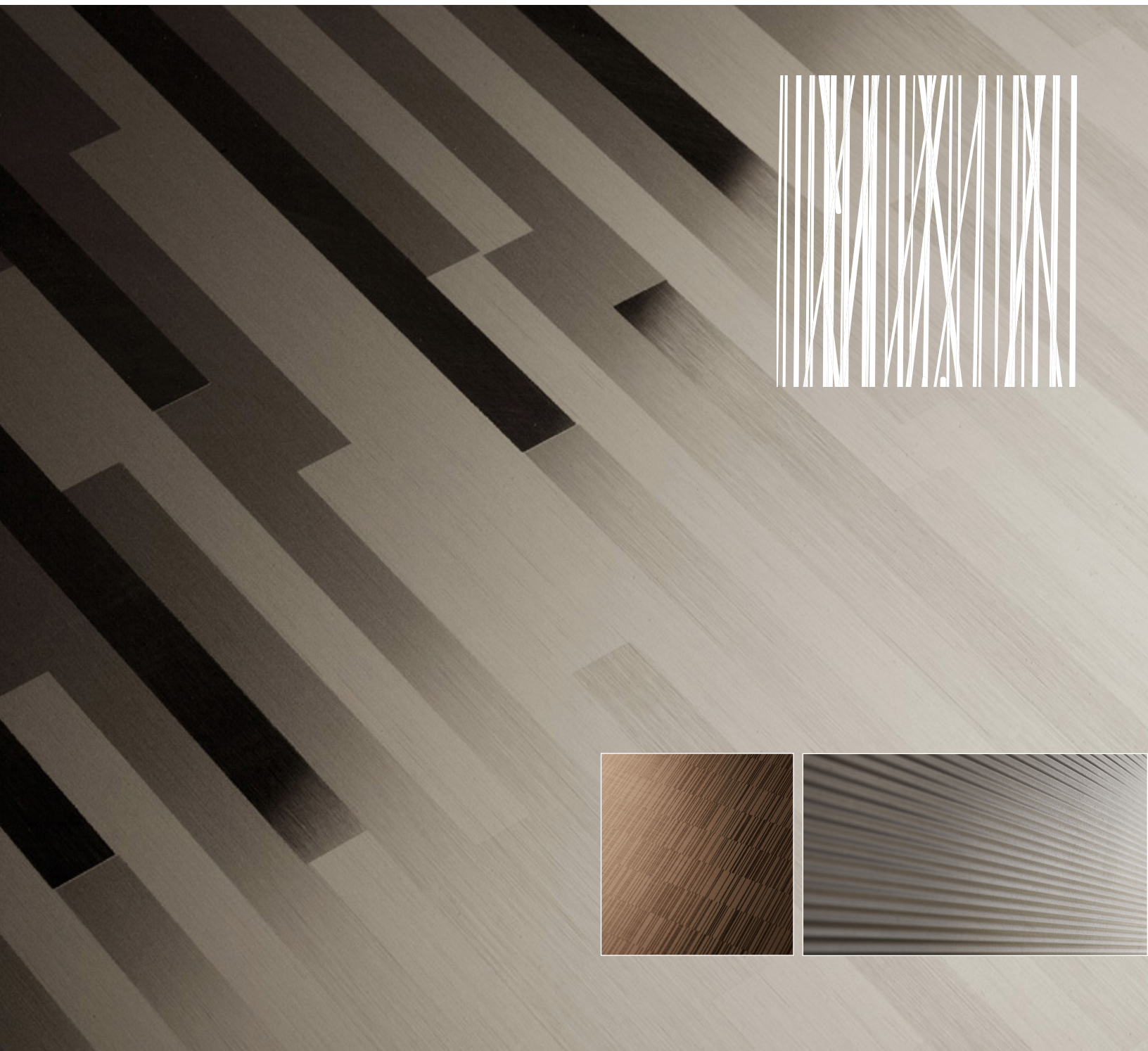




FUSED METAL®

PRODUCT DATA



FORMS+SURFACES®



FUSED METAL®

PRODUCT DATA

Fused Metal is Forms+Surfaces' exclusive line of colored stainless steel. We use vapor deposition technology to fuse titanium alloys at the molecular level to stainless steel substrates. Fused Metal provides the durability and low maintenance of stainless steel with a range of rich color options that includes Fused Bronze, Fused Graphite, Fused Nickel Silver and Fused White Gold.

For applications that require exceptional resistance to abrasion and wear, select among our High-Durability finishes including Sandstone, Seastone and Linen. These work-hardened surfaces are extraordinarily durable and perfect for high-traffic public areas.

MATERIAL DESCRIPTION

Fused Metal selections are defined by three basic parameters that are key to product specification:

COLOR	FINISH	PATTERN
Choose a metal: Fused Bronze, Fused Graphite, Fused Nickel Bronze, Fused Nickel Silver or Fused White Gold.	A variety of distinctive finishes are available including standard and High-Durability options. Please see pages two through four for available finish options for each Fused Metal.	The pattern will be applied to the metal/finish combination you have selected. Standard Impression, Eco-Etch and Fusion patterns are shown on pages five through ten. Custom patterns can also be requested.

PRODUCTS & APPLICATIONS

SHEET GOODS	LEVEL® WALL SYSTEMS & ELEVATOR INTERIORS	RAILING INFILL PANELS	ARCHITECTURAL ACCENTS
<ul style="list-style-type: none">Includes our full line of stainless steel materials in standard sheet sizes or sheared to your specifications. Standard sheet size is nominal 48" x 120" (1219 mm x 3048 mm). Due to processing requirements of Fused Metal, actual usable sheet size is approximately 48" x 119.25" (1219 mm x 3029 mm). Standard sheet thicknesses are 0.8 mm and 1.5 mm.Edge returns and many other add-on features are available.	<ul style="list-style-type: none">Fused Metal is available as standard inset panel options in LEVEL Wall Cladding System & LEVEL Elevator Interiors.For LEVEL Wall Systems, Fused Metal can be used with Minimal, Capture, Float and Blind panel types.	<ul style="list-style-type: none">Fused Metal can be used as an infill option in railings. Please contact us for additional information on how to incorporate into your application.	<ul style="list-style-type: none">Trim, wainscoting, counter facings and more.
DOORS	CABFORMS® ELEVATOR INTERIORS	ELEVATOR DOOR SKINS	COLUMN COVERS
<ul style="list-style-type: none">Fused Metal door choices include Eco-Etch, Impression, Stile & Rail and System 7 Doors. Many models are available with a full range of UL® fire labeling options.	<ul style="list-style-type: none">Fused Metal is available as facing material for our Series 1000 Elevator Interiors and as standard inset panel options or as cladding on stiles and rails in our Series 2000 CabForms Elevator Interiors.	<ul style="list-style-type: none">Fused Metal may be specified as durable and highly attractive skins for elevator doors or hoistway doors.	<ul style="list-style-type: none">For round, square or irregularly shaped columns.

MAINTENANCE & FIRE RATING

MAINTENANCE	FIRE RATING
Fingerprints and smudges can be removed using a non-chlorinated spray cleaner/degreaser such as Simple Green® and a microfiber cloth. Do not use harsh abrasives, acids or chlorine-based cleaners or cleaning tools containing carbon steel, such as steel wool or wire brushes.	Architectural Metals are inherently non-combustible and generally considered to be NFPA and IBC Class A fire rated and UBC Class 1 fire rated.

ENVIRONMENTAL CONSIDERATIONS

Please refer to the Fused Metal Environmental Data Sheets for detailed environmental impact information.

HOW TO SPECIFY

To order please indicate material, finish, pattern and quantity.

T 1.800.451.0410 | F 412.781.7840 | www.forms-surfaces.com

FORMS+SURFACES®

© 2018 Forms+Surfaces® | All dimensions are nominal. Specifications and pricing subject to change without notice. For the most current version of this document, please refer to our website at www.forms-surfaces.com.



FUSED METAL®

PRODUCT DATA

FINISH OPTIONS

Fused Metal is available in a variety of distinctive finishes including standard and High-Durability options. High-Durability finishes—designated by the “HD” logo below—are manufactured in a process that creates a work-hardened surface with enhanced resistance to abrasion and wear.

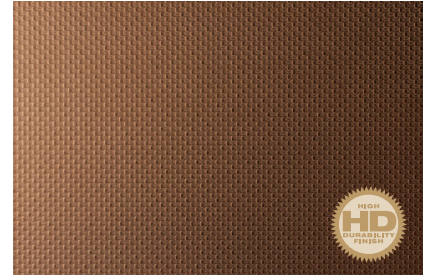
FUSED BRONZE™



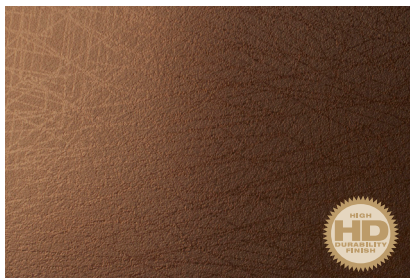
SANDSTONE



SEASTONE



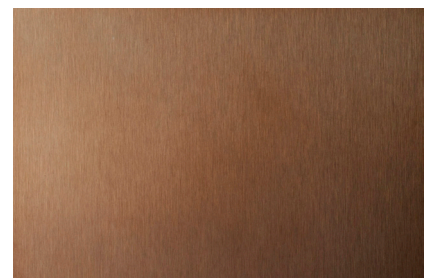
LINEN



DIAMOND



MIRROR



SATIN

FUSED GRAPHITE™



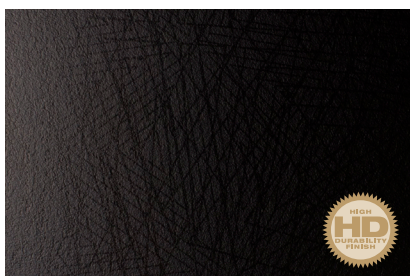
SANDSTONE



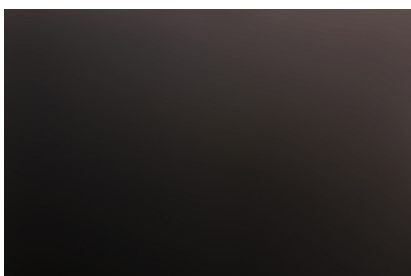
SEASTONE



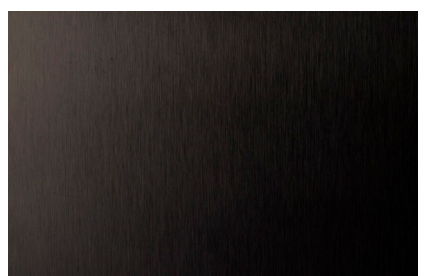
LINEN



DIAMOND



MIRROR



SATIN



FUSED METAL®

PRODUCT DATA

FUSED NICKEL BRONZE™



SANDSTONE



SEASTONE



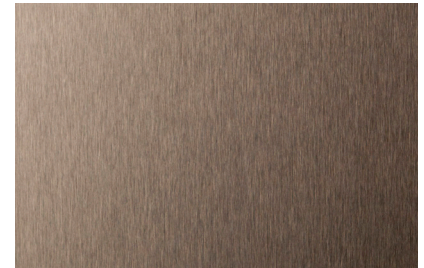
LINEN



DIAMOND



MIRROR

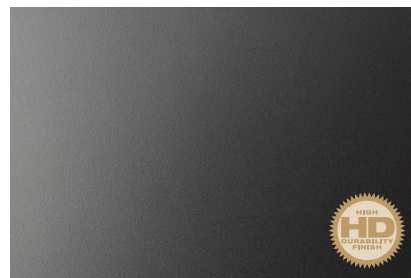


SATIN

FUSED NICKEL SILVER™



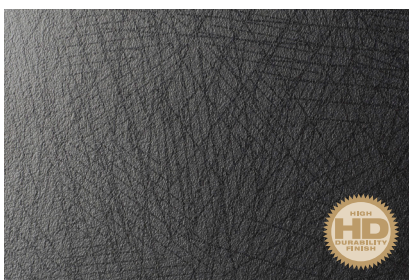
SANDSTONE



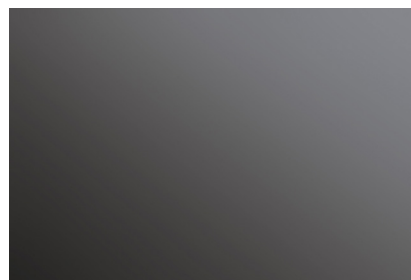
SEASTONE



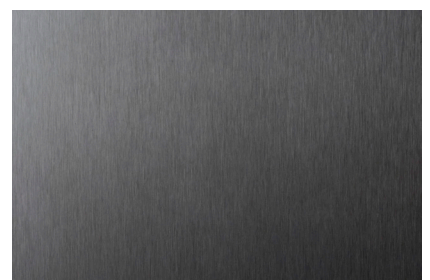
LINEN



DIAMOND



MIRROR



SATIN

Note: Because different computers will render colors and textures differently, actual finishes may vary from those shown.

T 1.800.451.0410 | F 412.781.7840 | www.forms-surfaces.com

FORMS+SURFACES®

© 2018 Forms+Surfaces® | All dimensions are nominal. Specifications and pricing subject to change without notice. For the most current version of this document, please refer to our website at www.forms-surfaces.com.



FUSED METAL®

PRODUCT DATA

FUSED WHITE GOLD™



SANDSTONE



SEASTONE



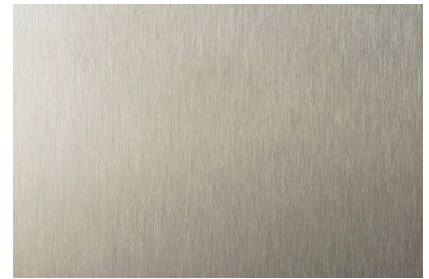
LINEN



DIAMOND



MIRROR



SATIN

Note: Because different computers will render colors and textures differently, actual finishes may vary from those shown.



FUSED METAL®

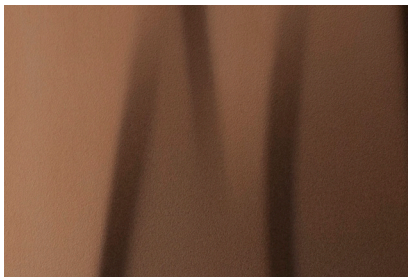
PRODUCT DATA

PATTERN OPTIONS


Patterns are optional applied designs that add visual interest and expanded customization potential to Fused Metal surfaces. From a functional standpoint, patterns pick up where metals and finishes leave off. Forms+Surfaces Fused Metal patterns are grouped into three broad categories: Impression, Eco-Etch and Fusion.

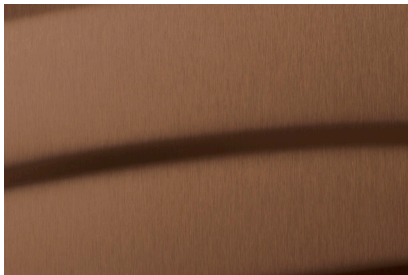
IMPRESSION™ PATTERN OPTIONS

Forms+Surfaces proprietary manufacturing capabilities include large-scale stamping equipment that can apply unique, full-press patterns across an entire sheet of material using a single tool. The result is a series of beautiful, high-relief patterns that add visual impact, enhanced durability and a rich, tactile feel. Some Impression patterns are also available in other materials such as Stainless Steel and our exclusive Bonded Quartz and Bonded Metal®, making it easy to carry a design theme throughout an installation in a variety of materials.




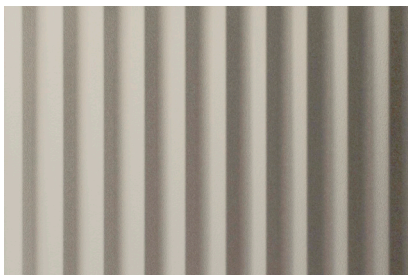
CHAMPAGNE™

SHEET THICKNESS	.032" (0.8 mm)
SHEET SIZE	48" x 120" (1219 mm x 3048mm)
HEIGHT	0.147" (3.7 mm)
 Scale Approximately: 1:1	

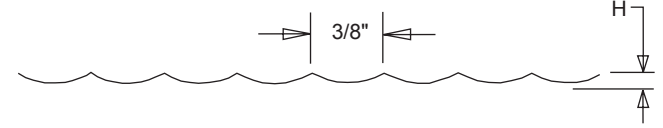


CHARDONNAY™

SHEET THICKNESS	.032" (0.8 mm)
SHEET SIZE	48" x 120" (1219 mm x 3048mm)
HEIGHT	0.147" (3.7 mm)
 Scale Approximately: 1:1	



DALLAS™

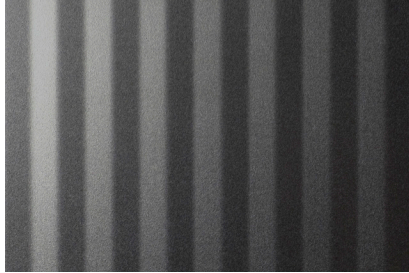
SHEET THICKNESS	.032" (0.8 mm)
SHEET SIZE	48" x 120" (1219 mm x 3048mm)
HEIGHT (H)	.0625" (1.6 mm)
 Scale Approximately: 1:1	

Note: Pattern is available in horizontal or vertical orientation

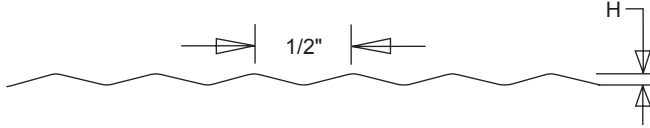


FUSED METAL®

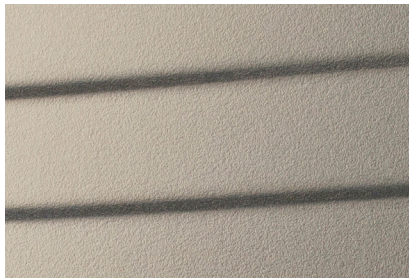
PRODUCT DATA




DENVER™

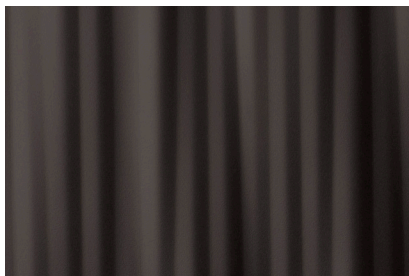
SHEET THICKNESS	.032" (0.8 mm)
SHEET SIZE	48" x 120" (1219 mm x 3048 mm)
HEIGHT (H)	.053" (1.3 mm)
 <p>Scale Approximately: 1:1</p>	

Note: Pattern is available in horizontal or vertical orientation




DUNE™

SHEET THICKNESS	.032" (0.8 mm)
SHEET SIZE	48" x 120" (1219 mm x 3048 mm)
 <p>Scale Approximately: 1:1</p>	



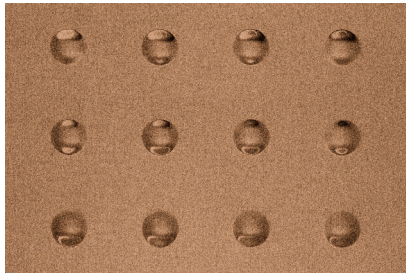
KALAHARI™

SHEET THICKNESS	.032" (0.8 mm)
SHEET SIZE	48" x 120" (1219 mm x 3048 mm)
HEIGHT	0.106" (2.7 mm)
 <p>Scale Approximately: 1:1</p>	



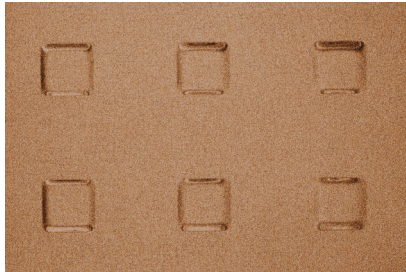
FUSED METAL®

PRODUCT DATA



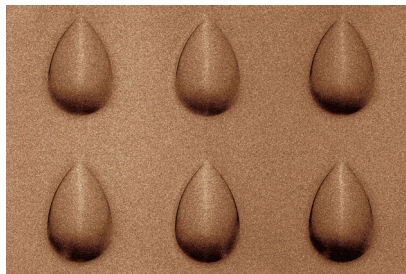
CIRCLE

EMBOSSURE SIZES	.312" dia.	.375" dia.	.50" dia.	.75" dia.	1.0" dia.
MINIMUM VERTICAL AND HORIZONTAL SPACING	2" c.c.	2" c.c.	2" c.c.	2" c.c.	3" c.c.
HEIGHT (H)	.08" (2 mm)				
<div><div></div><p>Scale Approximately: 1:1</p></div>					
SHEET THICKNESSES	.032" (0.8 mm)		.063" (1.5 mm)		
SHEET SIZE	48" x 120" (1219 mm x 3048mm)				



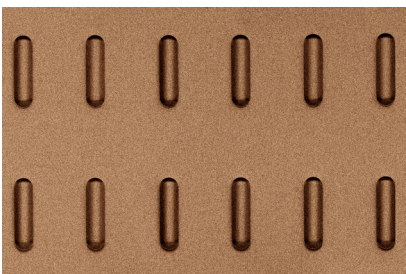
SQUARE

EMBOSSURE SIZES	.375" squ.	.50" squ.	.625" squ	1" squ.	1.5" squ.
MINIMUM VERTICAL AND HORIZONTAL SPACING	2" c.c.	2" c.c.	2" c.c.	3" c.c.	4" c.c.
HEIGHT (H)	.06" (1.5 mm)				
<div><div></div><p>Scale Approximately: 1:1</p></div>					
SHEET THICKNESSES	.032" (0.8 mm)		.063" (1.5 mm)		
SHEET SIZE	48" x 120" (1219 mm x 3048 mm)				



TEARDROP™

EMBOSSURE SIZE	MINIMUM VERTICAL SPACING	MINIMUM HORIZONTAL SPACING	HEIGHT (H)
.88" x 1.4"	3" c.c.	3" c.c.	.134" (3.4 mm)
<p>Scale Approximately: 1:1</p>			
SHEET THICKNESSES	.032" (0.8 mm)		.063" (1.5 mm)
SHEET SIZE	48" x 120" (1219 mm x 3048 mm)		



TECH™

EMBOSSURE SIZE	MINIMUM VERTICAL SPACING	MINIMUM HORIZONTAL SPACING	HEIGHT (H)
.25" x 1"	1.5" c.c.	1" c.c.	.075" (1.9 mm)
<p>Scale Approximately: 1:1</p>			
SHEET THICKNESSES	.032" (0.8 mm)		.063" (1.5 mm)
SHEET SIZE	48" x 120" (1219 mm x 3048 mm)		



FUSED METAL®

PRODUCT DATA

ECO-ETCH®

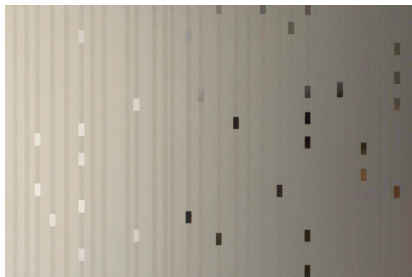
Beautiful etched designs are applied to Fused Metal using an advanced photolithographic bead-blasting system instead of acids or other harmful chemicals. Advantages of the Eco-Etch process include:

SIZE	SPEED	CONSISTENCY	ECOLOGICALLY RESPONSIBLE
The largest physical etching system in North America, our equipment can handle materials up to two meters wide by six meters long. Standard sheet size of 48" x 120" and standard sheet thicknesses of 0.8 mm and 1.5 mm are available.	The physical etching process can be completed in a fraction of the time required for traditional chemical etching.	Our proprietary computer-controlled system ensures an even blast pressure and a consistent finish, even on the largest surfaces.	Because our Eco-Etch is physically applied, it does not require etching acid or other harmful chemicals and no toxic waste is generated. The beads used in the process are contained within a closed chamber; used beads are recycled and returned to the process for reuse.

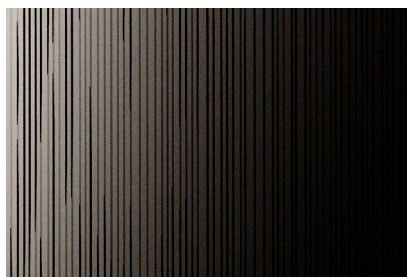
STANDARD AND CUSTOM ECO-ETCH PATTERNS

Standard designs include both overall and full-sheet patterns. Eco-Etch doors and elevator door skins also come in their own range of patterns optimized for door face applications. Please note that our standard patterns are only starting points; the flexibility and speed of our Eco-Etch system allow a wealth of design options with artwork supplied by the specifier or developed by Forms+Surfaces.

STANDARD ECO-ETCH PATTERNS



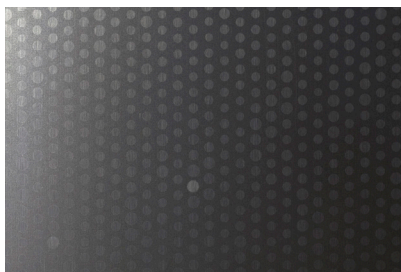
CITY LIGHTS™



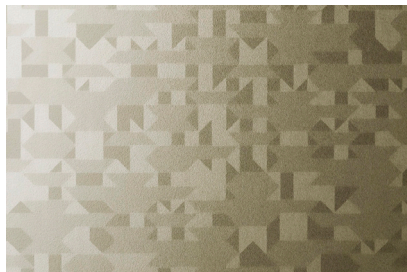
CURRENT™



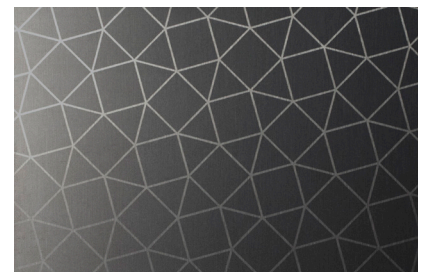
DASH™



FLICKER™



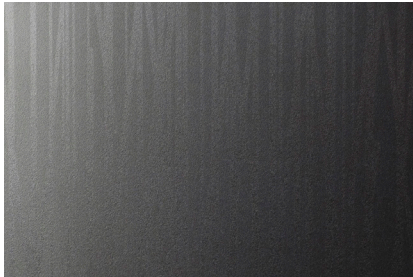
GLACIER™



MICA™



STANDARD ECO-ETCH PATTERNS cont.



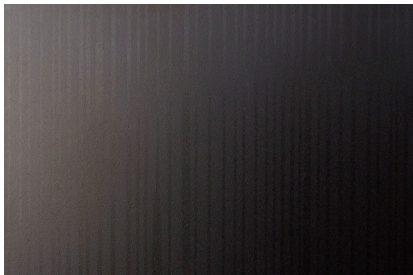
REEDS™



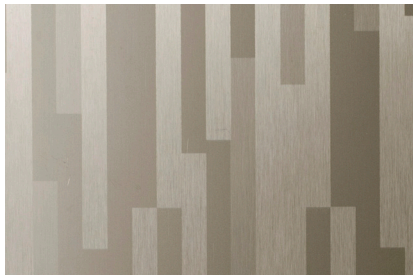
SEAGRASS™



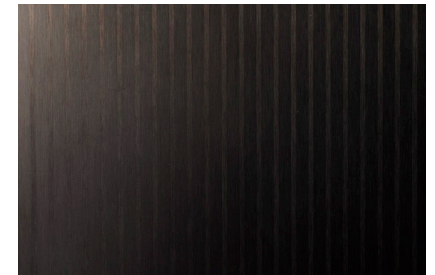
SEQUENCE™



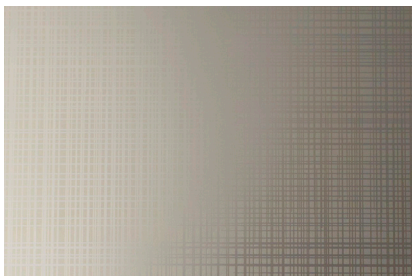
SILKWORM™



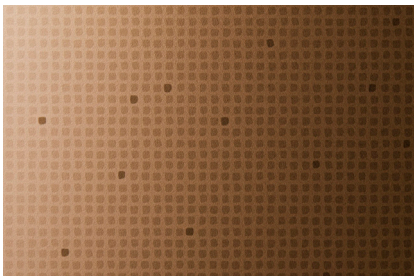
STACKS™



STRIPE™



THATCH™



TRACE™

Usage rights, permissions, and/or copyrights for all submitted artwork are the responsibility of the submitting party. Forms+Surfaces is not responsible for obtaining or verifying these rights or permissions and cannot be held liable for conflicts of rights tied to submitted artwork.

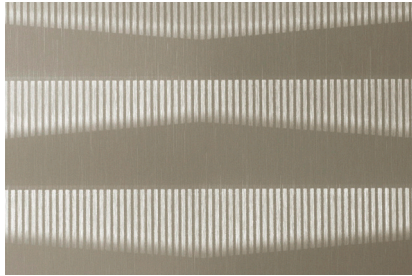


FUSED METAL®

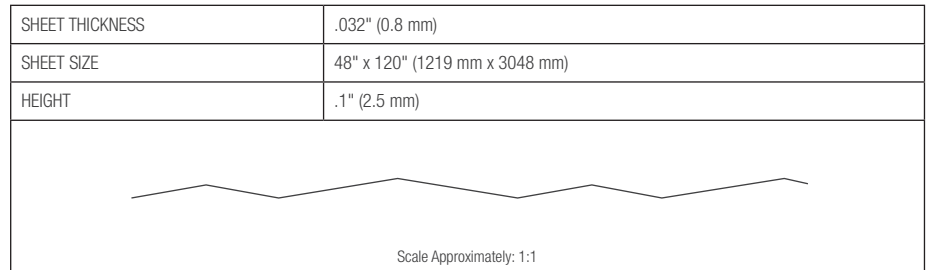
PRODUCT DATA

FUSION™

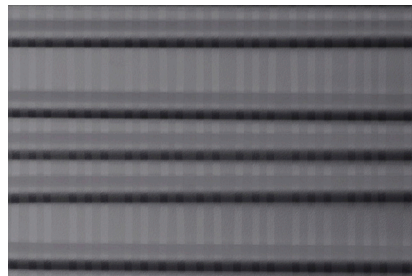
Fusion is a collection of surfaces created by the Forms+Surfaces Design Studio. As the name implies, each design is created by combining two or more pattern types, including Impression, Eco-Etch and Screens, to create a unique and visually intriguing surface.



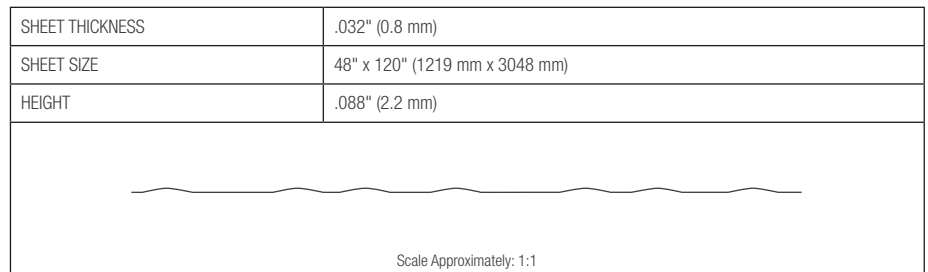
CARBON™



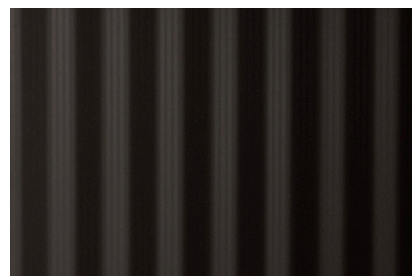
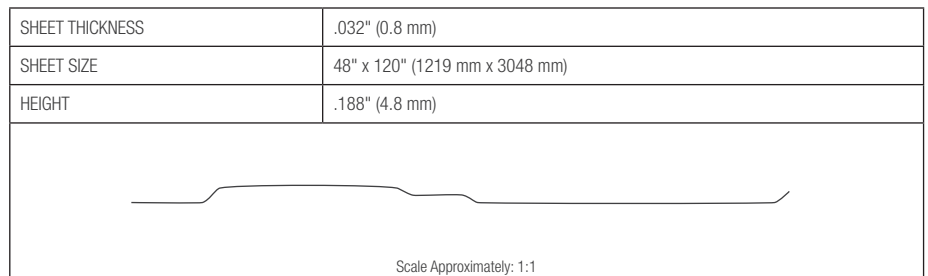
Note: Pattern is available in horizontal or vertical orientation



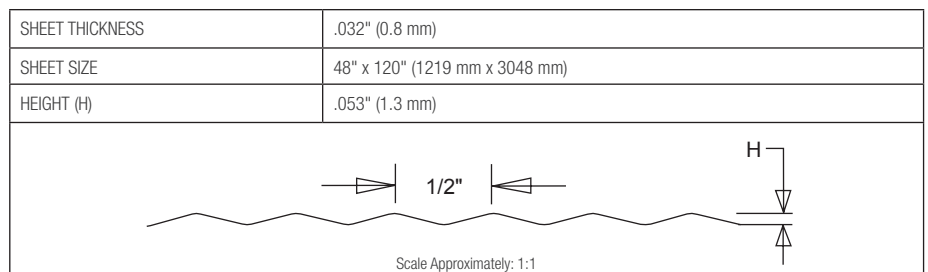
CINCH™



MESA™



MORAINÉ™



Note: Pattern is available in horizontal or vertical orientation



FUSED METAL®

PRODUCT DATA





CUSTOM PATTERNS

As the international leader in high-quality Fused Metal, Forms+Surfaces is always willing to consider custom pattern variations and modifications to meet specific project needs. Please contact us to discuss your requirements.

WEIGHT

Fused Metal is available in two thicknesses. The .032" (0.8 mm) thickness has a standard weight of approximately 1.6 lbs./sq. ft (7.8 kg/sq. m) and the .063" (1.5 mm) thickness weighs approximately 2.5 lbs./sq. ft (12.2 kg/ sq. m).

STANDARD FUSED METAL FINISH AND PATTERN COMBINATIONS

	IMPRESSION											ECO-ETCH														FUSION					
	Flat (No Pattern)	Champagne	Chardonnay	Dallas	Denver	Dune	Kalahari	Circle	Square	Teardrop	Tech	City Lights	Current	Dash	Flicker	Glacier	Mica	Reeds	Seagrass	Sequence	Silkworm	Stacks	Stripe	Thatch	Trace	Custom	Carbon	Cinch	Mesa	Moraine	
(Fused Bronze, Fused Graphite, Fused Nickel Bronze, Fused Nickel Silver or Fused White Gold)																															
Sandstone 	•	•	•	•	•	•	•	•	•	•	•																•				
Seastone 	•	•	•	•	•	•	•	•	•	•	•	•	•	•	•	•	•	•	•	•	•	•	•	•	•	•	•	•	•	•	•
Linen 	•	•	•	•	•	•	•	•	•	•	•																•				
Diamond 	•	•	•	•	•	•	•	•	•	•	•																•				
Mirror	•	•	•	•	•	•	•	•	•	•	•	•	•	•	•	•	•	•	•	•	•	•	•	•	•	•	•	•	•	•	•
Satin	•	•	•	•	•	•	•	•	•	•	•	•	•	•	•	•	•	•	•	•	•	•	•	•	•	•	•	•	•	•	•