



FUNDERMAX®

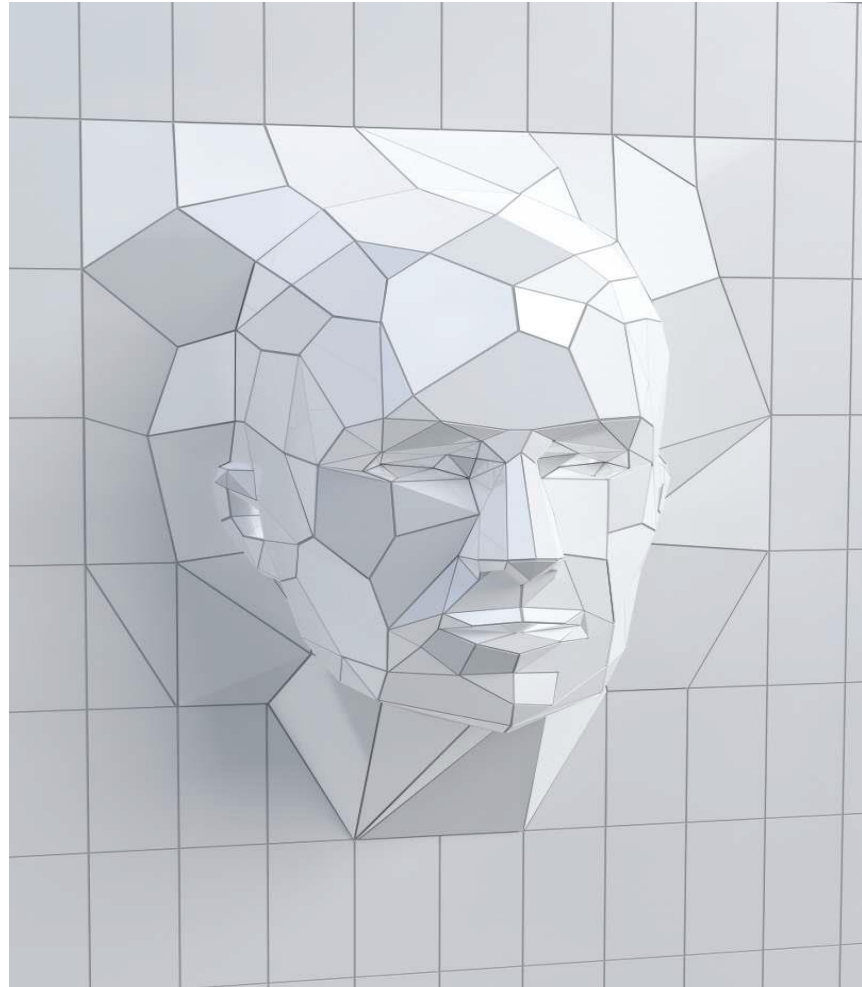


**for
people
who
create**

www.fundermax.in

Commercial Buildings

The Original
is true to itself

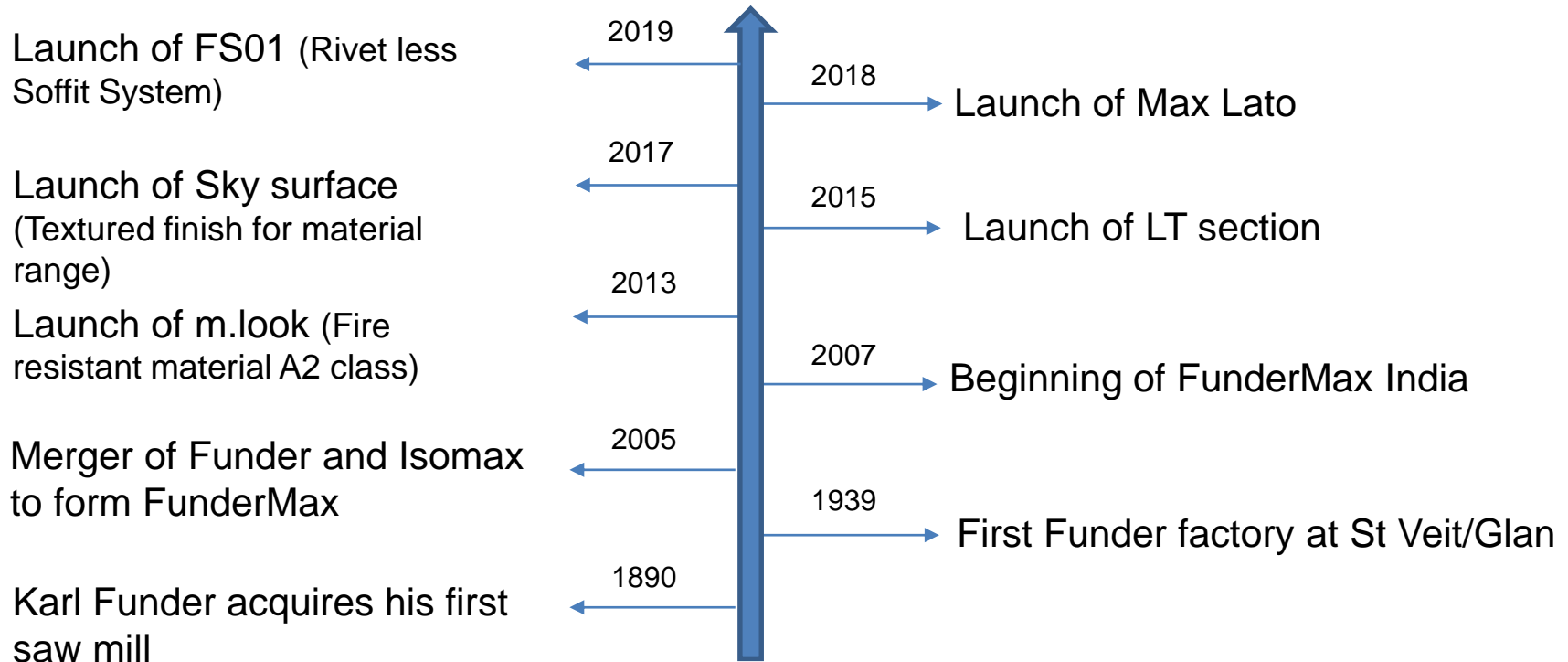


Commercial projects & FunderMax – A sustainable partnership

- FM panels well suited for high impact conditions of commercial buildings
- Anti-graffiti properties of FM panels make them the ideal choice of material for highly public areas like commercial spaces
- Scratch resistance – an added advantage
- Low maintenance
- Experience in working on commercial projects worldwide
- Acoustics comfort as panels can absorb the sound.
- System design to ensure safety against wind load in high rise buildings

FunderMax India – a timeline

Constantia
INDUSTRIES AG



FunderMax India

The Original

Sustainable : Innovative : Creative

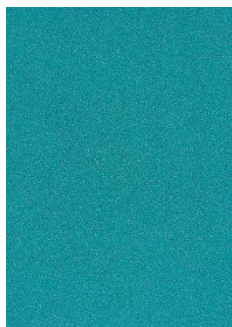
- **‘Give your buildings character’** by artistically enhancing the aesthetical appeal of the building with 121 decors on offer.
- FunderMax India has executed more than 12,000 projects in the past 12 years across Corporate, Hospitality, Residential and Retail sectors amounting to 1.2 million sq m.
- We provide a high degree of design freedom **‘for people who create’**.
- Panels are low maintenance, impact resistance and long lasting.
- We are a complete solution provider, supplying not only Max Exterior panels but also FunderMax developed installation system.
- Network of trained business partners across country ensures usage of right tools and installation methodology (Stress free installation)

Max Exterior range and surfaces

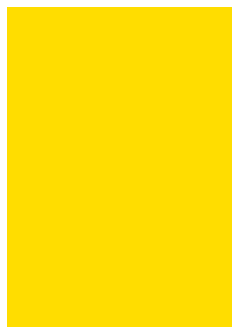
Material



Metallic



Colour



Authentic



Individual



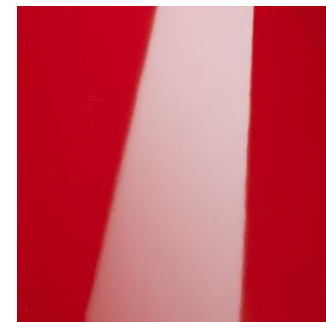
Nature



NY - Sky



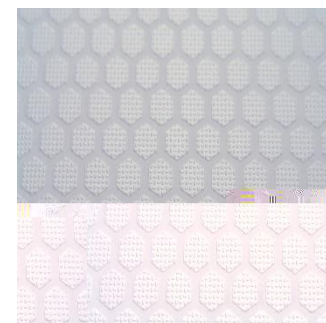
NG - Gloss



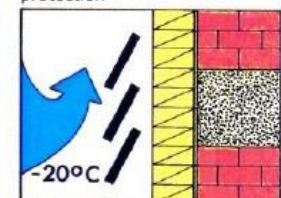
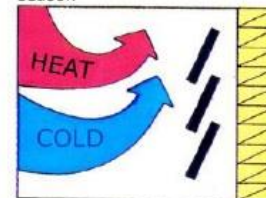
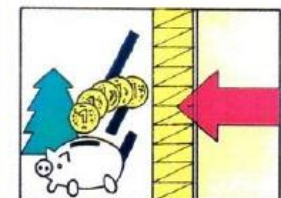
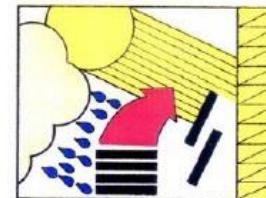
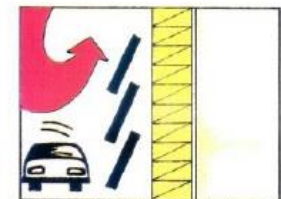
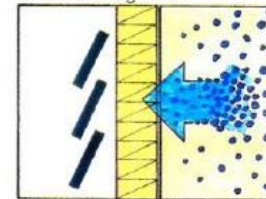
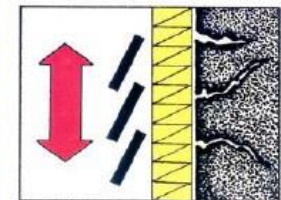
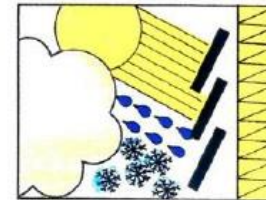
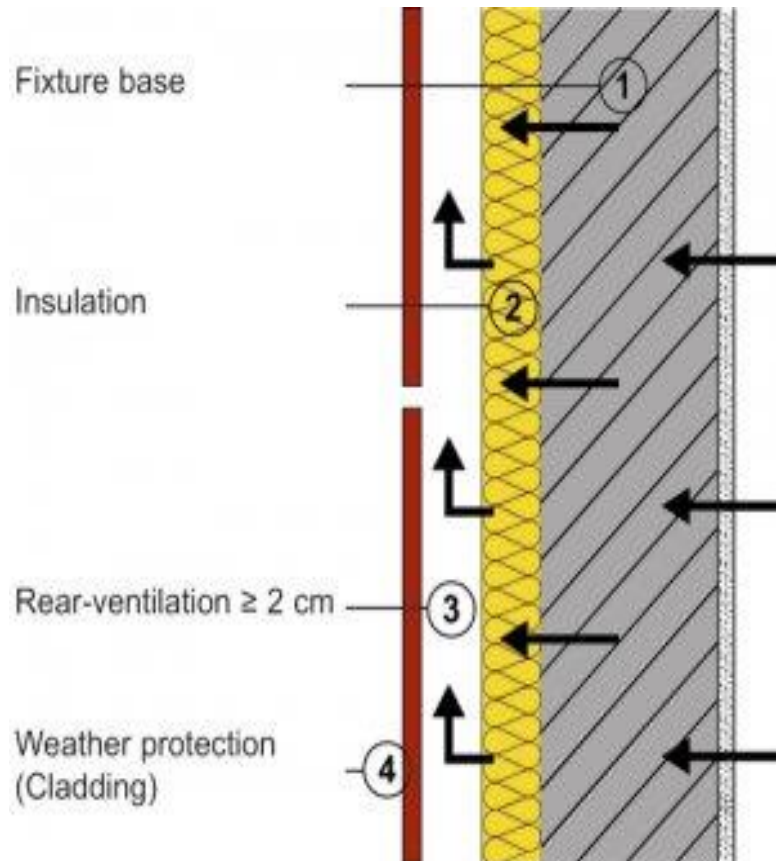
NT



NH - Hexa



Rear ventilated façade and advantages



FunderMax value chain

Architects & users



FunderMax range of 121
decors provide design freedom
to architects

FunderMax value chain

Architects & users



FM sales team



FM sales team acts a liaison
between architects, FM design
team and site contractors
adding value along the process

FunderMax value chain

Architects & users



FM sales team



FM AE team



Support provided by FM AE team:

- Optimisation to reduce wastage
- Rendering of project image to compare décors
- Design of systems to suit site conditions and user requirements
- Shop drawings
- Presence of Application Engineering personnel during installation to ensure quality

FunderMax value chain

Architects & users



FM sales team



FM AE team



Based on inputs from AE,
architects and project owners,
material order is placed

Manufacturing happens in FM
Austria

Adherence to EN standards, FSC,
PEFC norms

FM production unit at Austria



FunderMax value chain

Architects & users



FM sales team



FM AE team



Materials transported to
Bangalore

Stored in 50,000 sq ft FM
warehouse before being
sent of to installation
locations across India

FM warehouse at BLR



FM production unit at Austria



FunderMax value chain



Installation happens only through one of 44 authorized installation partners across India

FunderMax value chain

Architects & users



FM sales team



FM AE team



FM authorized business partners



FM warehouse at BLR



FM production unit at Austria



Iconic buildings



Exterior panels & fire properties

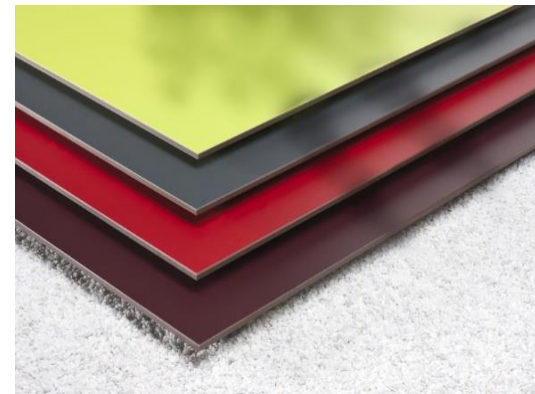
m.look : The greatest degree of freedom and creativity in fire-resistant material for architecturally limitless ideas.

- A2-s1, d0 in accordance with EN 13501-1
- Size : 1630 mm x 3660 mm
- Thickness : 7 mm & 9mm
- Panels with double side décor
- ✓ Applications : Exterior façade, ceiling applications, Balconies, railings etc



Max Exterior F grade : High design freedom for people who create.

- B-s2, d0 in accordance with EN 13501-1
- Size : 1300 mm x 2800 mm, 4100 mm x 1300 mm, 2800 mm x 1854 mm, 4100 mm x 1854 mm
- Thickness : 6 mm & 8 mm
- Panels with double side décor
- ✓ Applications : Exterior façade, ceiling applications, Balconies, railings etc



Design and application possibilities

Façades



Soffits



Curved Facades/ Soffits



Ceilings



Louvers/ Sun blinds



Column cladding



Design and application possibilities

Canopy



Gates / Fences



Signage



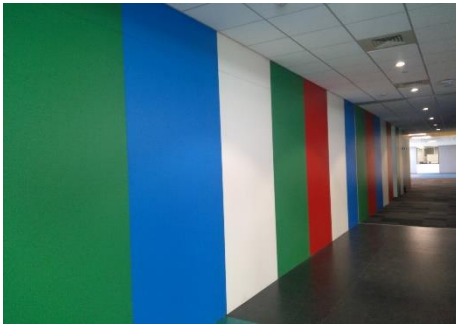
Interior panels

- FunderMax Compact Interior panels are high-pressure laminate panels (HPL) manufactured to standard EN 438 that are produced in laminate presses under high pressure at high temperature.
- Max Compact panels are high-pressure laminates (HPL) in accordance with EN 438-4 Type CGS for heavy-duty areas of application (e.g., wet rooms, wall cladding, office furniture).
- FunderMax Star Favorit panels are melamine resin laminated flat-pressed panels of type MFB in compliance with EN 14322 and 14323.
- Star Favorit panels are suitable for interior applications for all types of carcass furniture in apartment and commercial buildings.



Design and application possibilities

Internal wall cladding



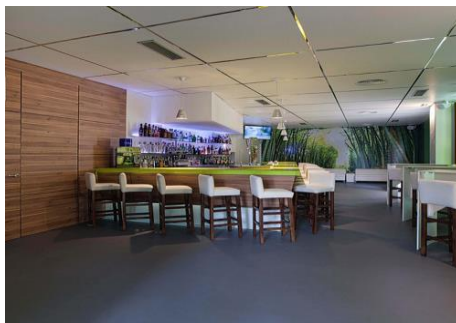
Rest room Cubicles



Lockers



Shop fittings



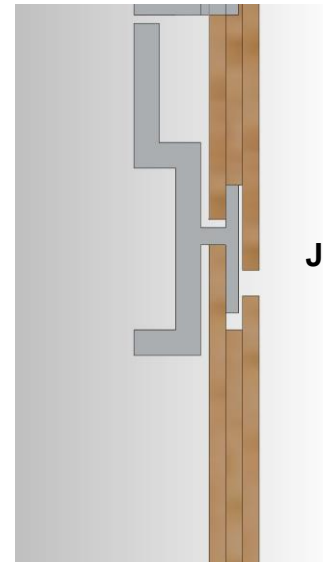
Furniture



FS01 – Rivet less soffit system



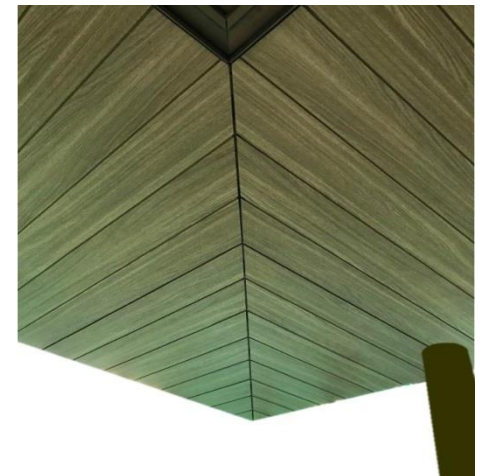
Finished view



Junction Detail @ FS Clip

Installation:

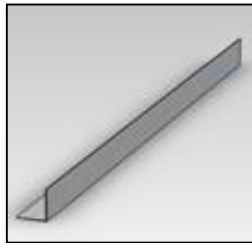
- The FM panels are available of Strips size's of 430,325,215 & 163mm
- Primarily Aluminum small brackets (LT -02) & Thermal Separators is fixed to the wall using SS – Anchor Fastener.
- Aluminum 'L' – Profile(L3) is fixed to Aluminum Small Brackets(LT – 02) using Self Tapping Screws.
- The Aluminum FS Clip is fixed on Aluminum 'L' Profile (L3) using Self tapping Screw.
- Pre - machined Grooves facilitates the installation of panel by FS Clip
- Installation of the panel follow the stress free system.
- Every panel has to be screwed through clip & Panels at any one of the corner.
- This is a unique soffit system without rivets.



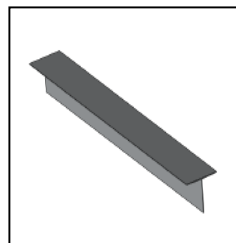
Lapsiding – cladding system

Installation:

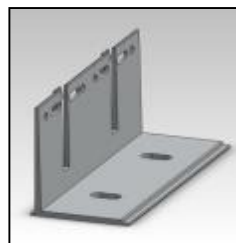
- Installation of FunderMax panels for Lap sliding application would be with FunderMax supplied lap siding-clips with recommended Aluminum T section of 100 x60 x 2 mm thick and L section 40 x 60 x 2mm thick held by Wall Bracket with Wind load and Dead load slot as per design, anchored by standard Hilti/Fischer or equivalent make anchor fasteners along with Thermal Separator.
- Installation of FunderMax Panels will be done using Rear Ventilated Principles only, which is ensured by providing gaps of 20mm at top and bottom (for free flow of air behind the façade) for the façade and using the framework with no horizontal section. All specification has to be approved by Authorized Façade Consultant.



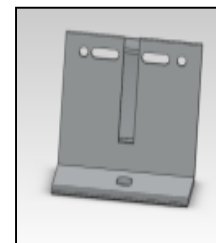
L – Angle



T – Profile



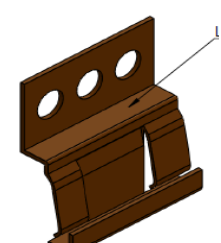
Big Bracket



Small Bracket



Rivet



Lapsiding Clip

References

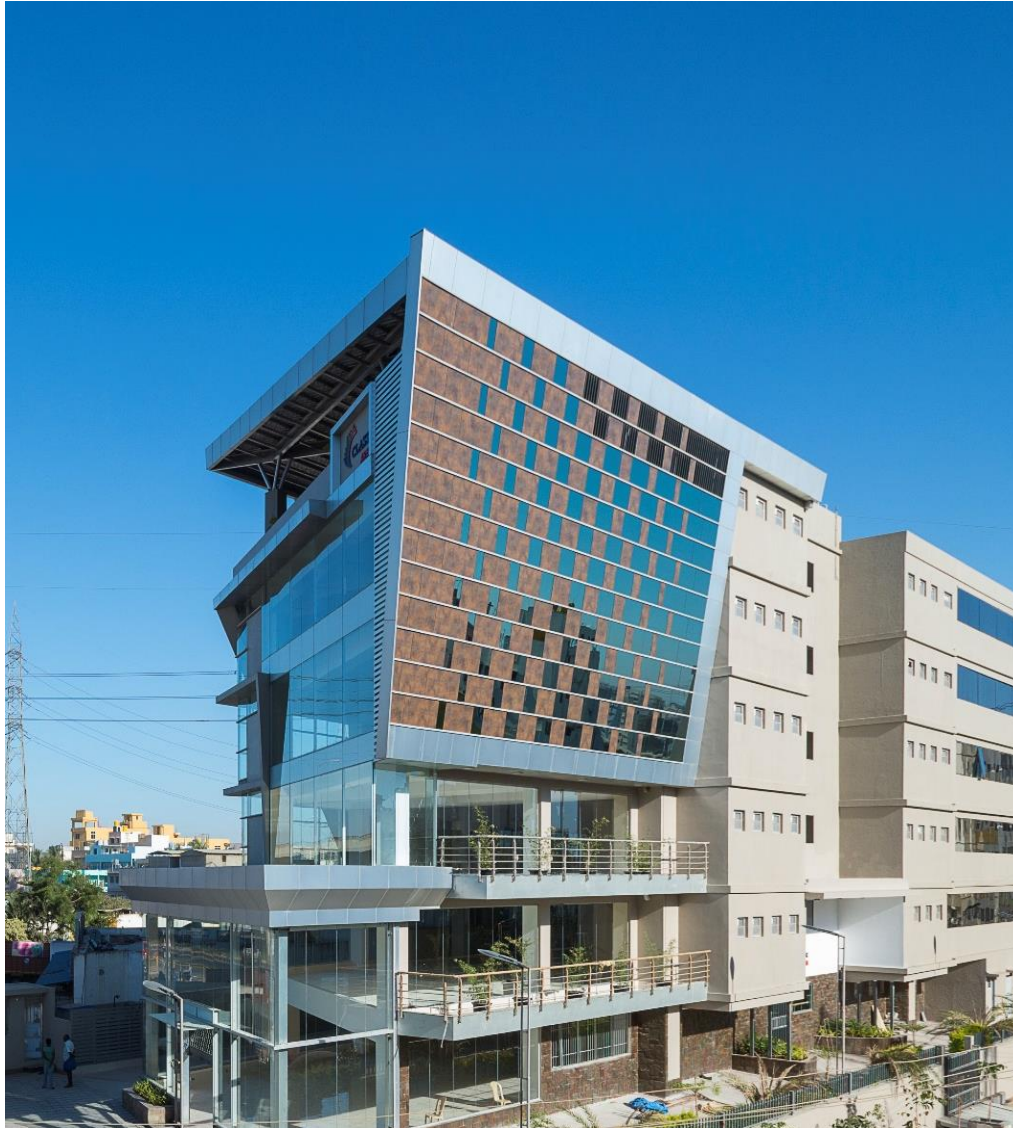
Project Name- Classic Arena

Décor- 0794

Location- Bangalore

Application: Façade

FUNDERMAX®



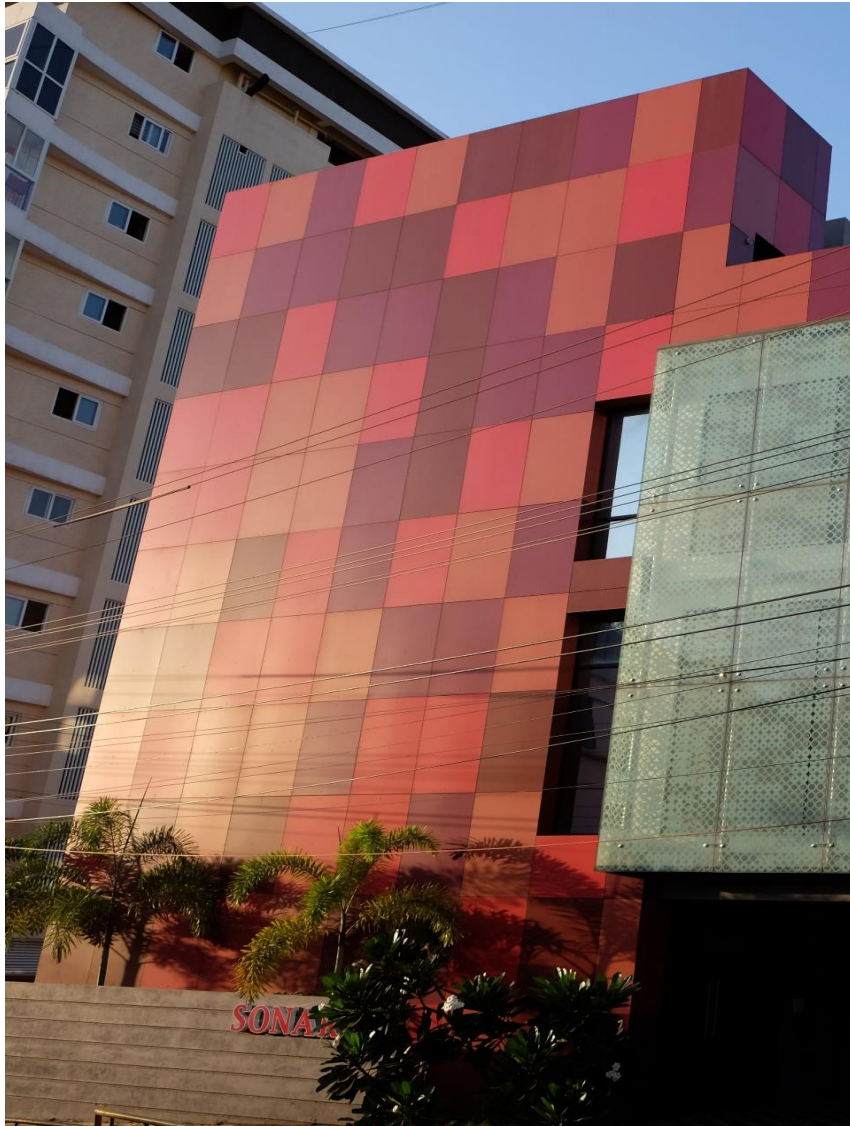
Project Name- Arjun Mora

Décor- 0691_0689_0661_0680

Location- Mangalore

Application: Façade

FUNDERMAX



Project Name- Venkat Commercial

Décor- 0496_0429

Location- Kerala

Application: Façade

FUNDERMAX



Project Name- Wings

Décor- 0272

Location- Bangalore

Application: Façade

FUNDERMAX



Project Name- Snow City

Décor- 0085

Location- Bangalore

Application: Façade

FUNDERMAX



Project Name- Jewelry Shop

Décor- 0085_0803_0496

Location- Mysore

Application: Façade

FUNDERMAX



Project Name- Buhler

Décor- 0085_0328

Location- Bangalore

Application: Façade

FUNDERMAX



Project Name- Sundaram Towers

Décor- 0085

Location- Chennai

Application: Façade

FUNDERMAX



Project Name- Starbucks Coffee

Décor- 0028

Location- Bangalore

Application: Façade

FUNDERMAX



Project Name- Utsa by Tata trent

Décor- 0794

Location- Parihar Chowk, Aundh

Application: Façade

FUNDERMAX



Project Name- KFC Restaurant

Décor- 0674_0085

Location- Delhi

Application: Façade

FUNDERMAX



Project Name- Allen Solly Showroom

Décor- 0803

Location- Bangalore

Application: Façade

FUNDERMAX



Other segments associated with FunderMax

- Developers
- Corporates
- Airport
- Healthcare
- Educational institutions
- Hospitality
- Retail
- Individual residences

Thank you

**for
people
who
create**