



- Content of Crete bricks packaging assume a joint of 1cm (10mm).
- Colours in the catalogue are as accurate as printing process allows, please check actual tiles sample before making the final selection.
- Deviation in dimensions  $\pm 2\%$ .

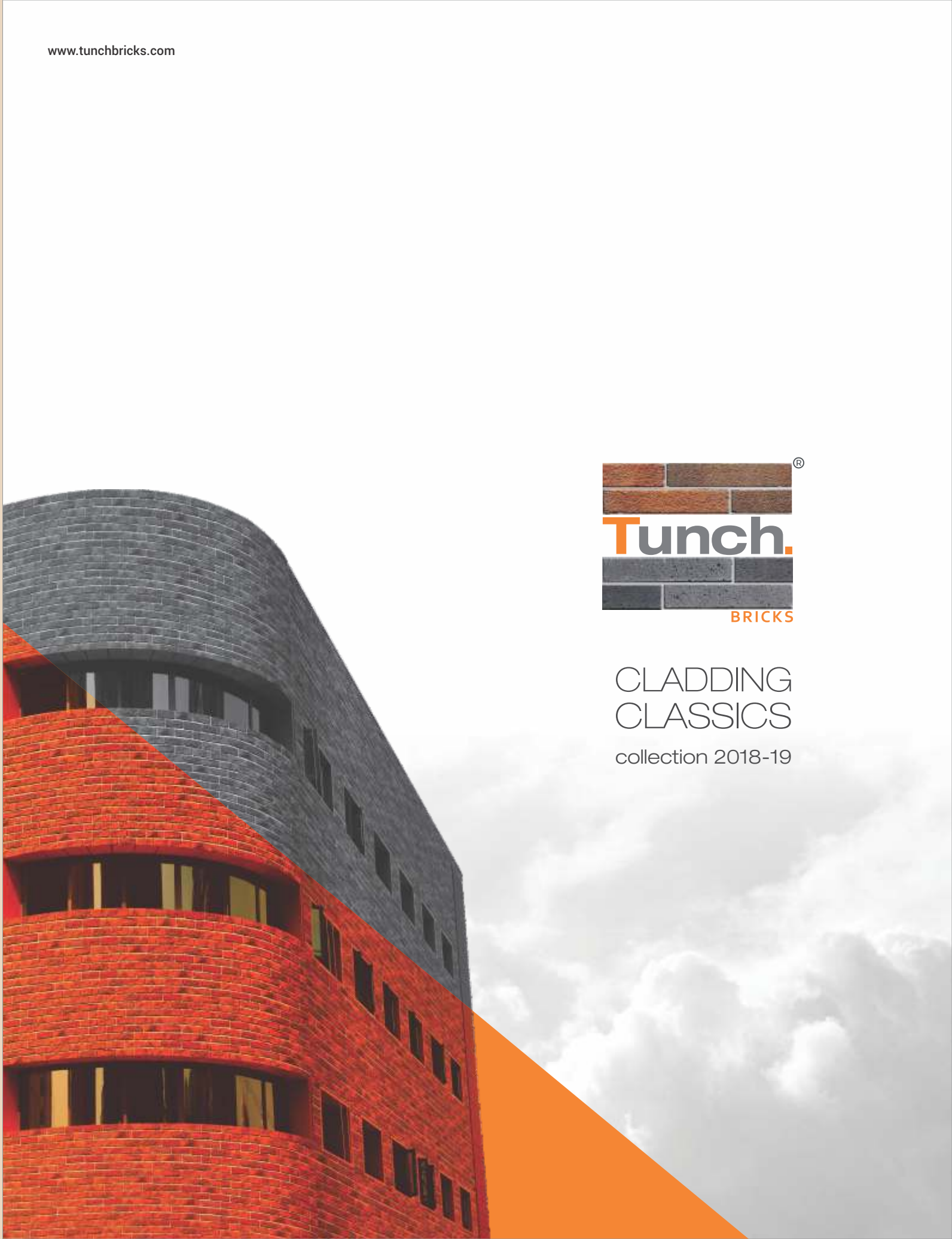


1/A, Silver Line, 1<sup>st</sup> floor S.B. Road, J.B. Nagar  
Andheri East, Mumbai, Maharashtra - 400059

Email: [info@tunchbricks.com](mailto:info@tunchbricks.com) Web.: [www.tunchbricks.com](http://www.tunchbricks.com)  
Call +91 9770645582, +91 90673 78108



CLADDING  
CLASSICS  
collection 2018-19







# Introduction

Astounding ambience creates awe-inspiring mood. Tunch Bricks is inspired to create majestic environments with it's amazing range of cladding products. We believe in understanding & catering to the needs of our clients and forming an inseparable relationship.

WHY TUNCH BRICKS?

- Perfect for both interior and exterior surfaces.
- Tunch Bricks are timeless and retain their look for years.
- Tunch Bricks can be used in modern as well as vintage architectural structures.
- Water absorption level is below 3 % to 5 %.
- Cost effective choice in longer run as:-

NO MAINTENANCE REQUIRED	NO COLOUR FADING
NO ALGAE FORMATION	NO PAINT REQUIRED



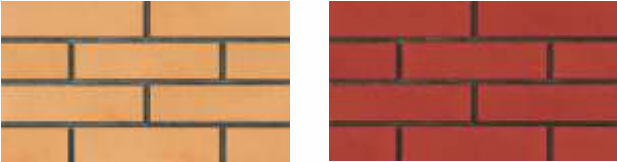




# Tunch Clay Bricks

Interior or exterior, residential or commercial, Tunch Clay Bricks suits every need with its varied look & feel. The quality, the appearance, the texture will make you ecstatic. Tunch Clay Bricks is available in a variety of hues and textures and the only brand in India with a low water absorption.

## Smooth & Plain



Sunburst

Rubigo

Product Name	Product Code	Size (in mm)	Thickness	Pcs/Box	Wt/Box	Sqft/Box
Sunburst	TBCL 236	60x240	11 mm	60	19.5 kg	9.30
Rubigo	TBCL 636A	60x240	11 mm	60	19.5 kg	9.30

## Rough & Plain



Lighthouse

Landmark

Stormberg

Kingsport

Product Name	Product Code	Size (in mm)	Thickness	Pcs/Box	Wt/Box	Sqft/Box
Lighthouse	TBCL 884	60x240	11 mm	60	19.5 kg	9.30
Landmark	TBCL 886	60x240	11 mm	60	19.5 kg	9.30
Stormberg	TBCL 775 B	60x240	11 mm	60	19.5 kg	9.30
Kingsport	TBCL 636B	60x240	11 mm	60	19.5 kg	9.30





Smooth & Shaded



Cinnamon Metallika

Product Name	Product Code	Size (in mm)	Thickness	Pcs/Box	Wt/Box	Sqft/Box
Cinnamon	TBCL 6322	60x240	11 mm	60	19.5 kg	9.30
Metallika	TBCL 6788	60x240	11 mm	60	19.5 kg	9.30

Rough & Shaded



Coral Burnt Midland Garnet Alamo

Product Name	Product Code	Size (in mm)	Thickness	Pcs/Box	Wt/Box	Sqft/Box
Coral Burnt	TBCL 6373	60x240	11 mm	60	19.5 kg	9.30
Midland Garnet	TBCL 7763	40x230	11 mm	90	18.8 kg	8.91
Alamo	TBCL 5692	60x240	11 mm	60	19.5 kg	9.30







# Tunch Crete Bricks

Tunch Crete Bricks feature a natural and aged finish inside and out for the desired vintage & venerable look. Crete bricks create a beautiful backdrop with a cozy and inviting ambiance whilst letting various elements in the room shine through. An ideal reason to give them space in your architectural creations.



Dolomite



Alaska Bianco



Raven

Product Name	Product Code	Size (in mm)	Thickness	Pcs/Box	Wt/Box	Sqft/Box
Dolomite	TBCR 2330	230x63	15 mm	70	24 kg	10.76
Alaska Bianco	TBCR 631	205x64	14 mm	64	18 kg	10.76
Raven	TBCR W02	200x60	25 mm	62	24 kg	10.76





Burnt Almond



Auburn



Lucido

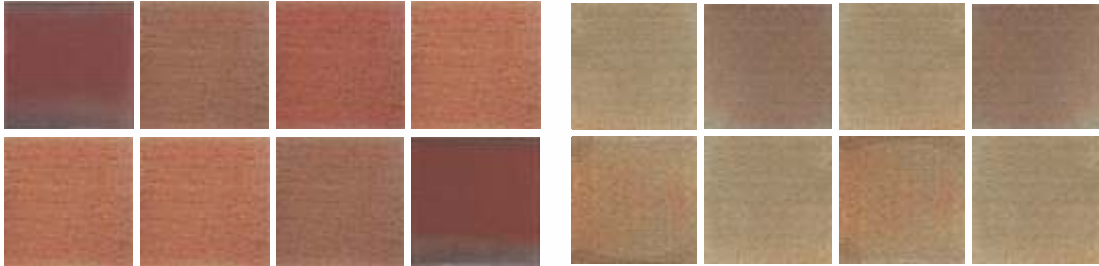
Product Name	Product Code	Size (in mm)	Thickness	Pcs/Box	Wt/Box	Sqft/Box
Burnt Almond	TBCR 25	205x64	14 mm	64	18 kg	10.76
Auburn	TBCR 76	220x60	14 mm	62	17 kg	10.76
Lucido	TBCR D08	300x50	20 mm	40	20 kg	6.46





# Tunch Clay Flooring

Let your feet feel the warmth of nature with rawness as the most vital ingredient of Tunch Clay Flooring. Along with nature’s touch, this shaded flooring gives perfectly blended appearance to ambience of being modern as well as antique.



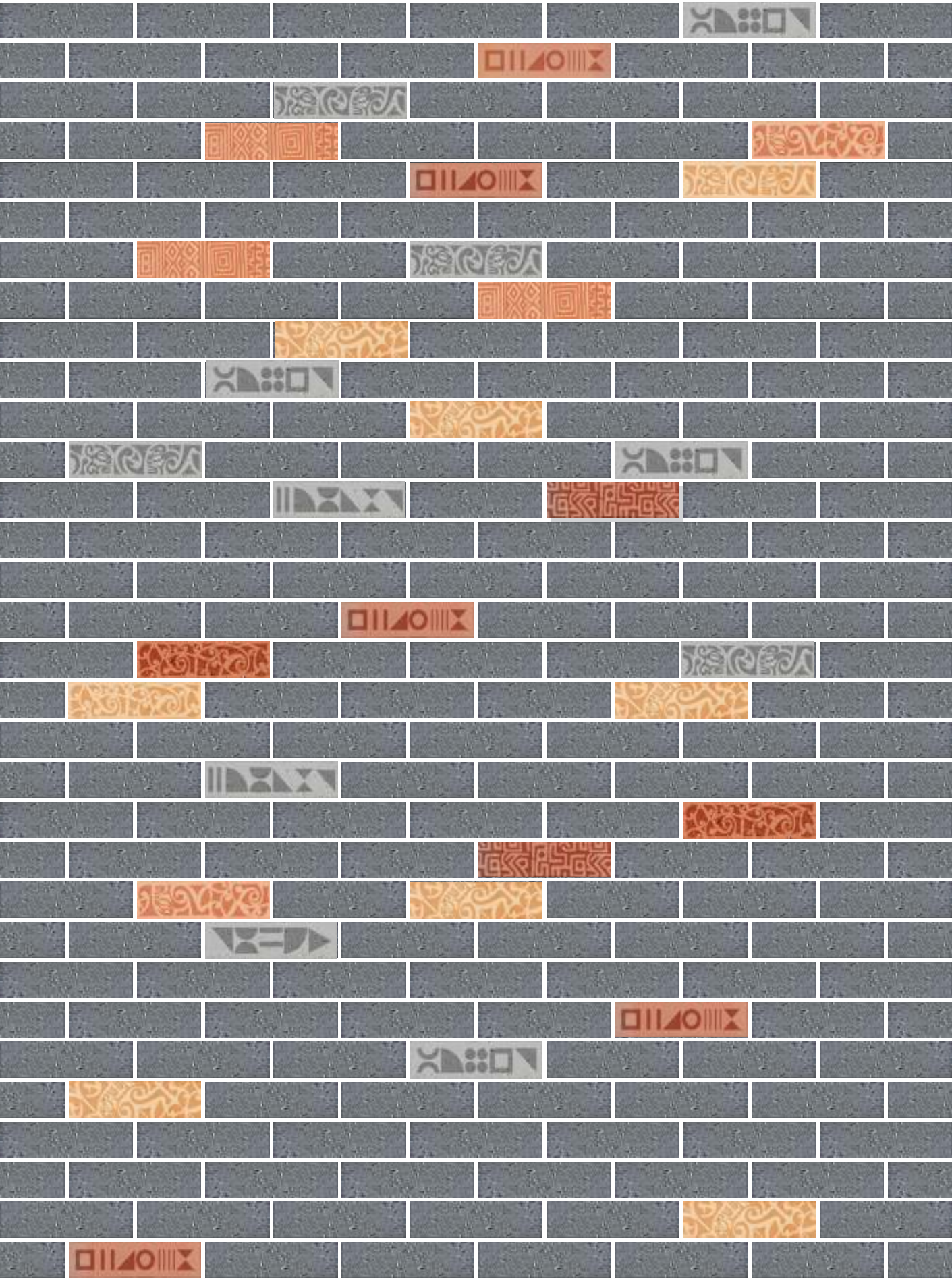
Commodore

Gold Coast

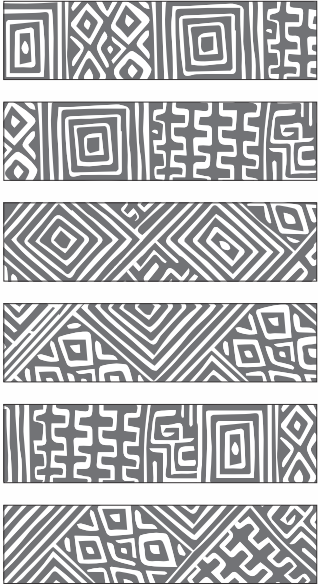
Product Name	Product Code	Size (in mm)	Thickness	Pcs/Box	Wt/Box	Sqft/Box
Commodore	TBCL 6373 F	200x200	12 mm	15	18 kg	6.9
Gold Coast	TBCL 2312 F	200x200	12 mm	15	18 kg	6.9



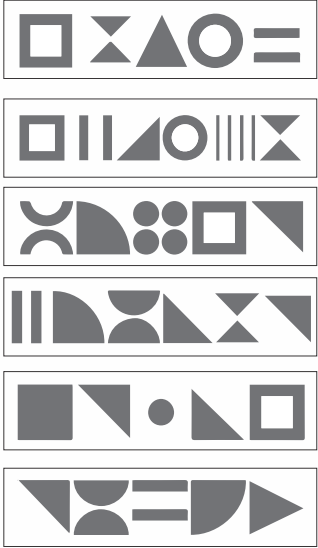
# Sculpt Collection



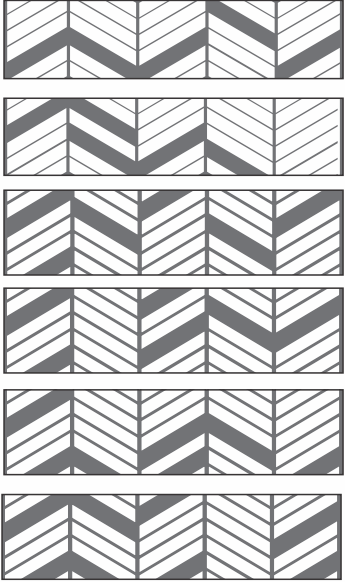
Opici



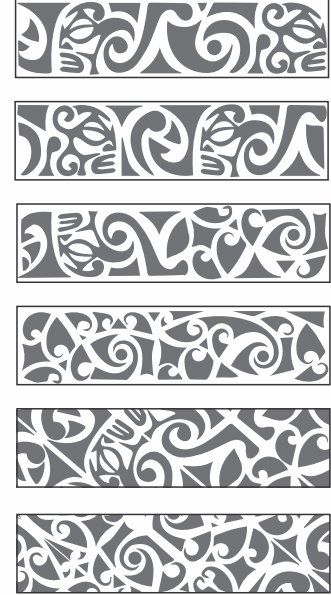
Giza



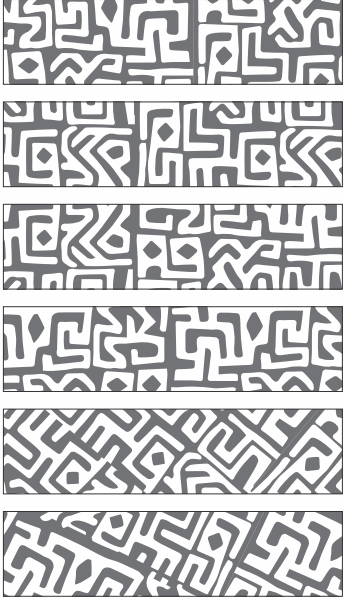
Dacian



Maori



Massai



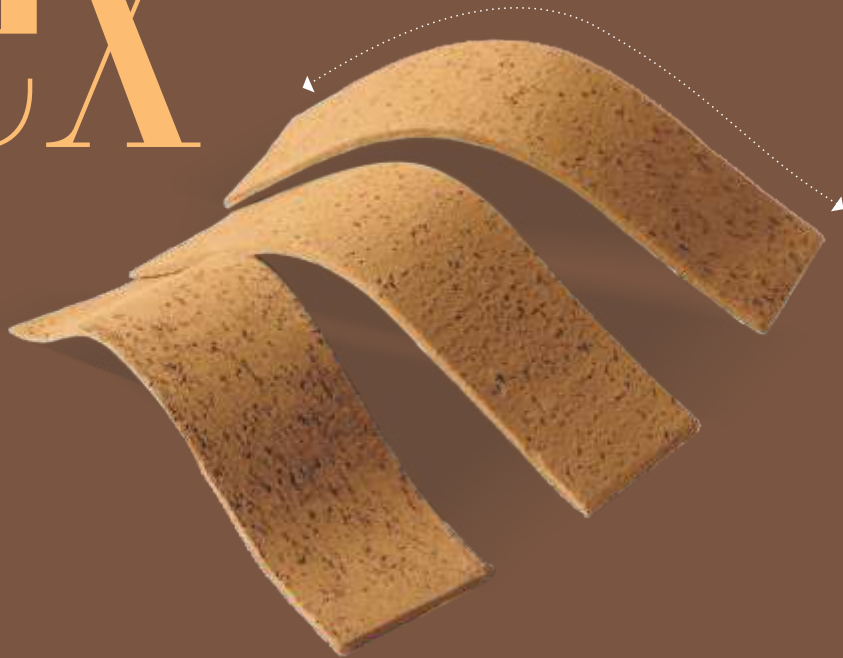
Products available  
in collection:

Alamo, Cinnamon, Coral Burnt,  
Rubigo, Sunburst, Kingsport,  
Lighthouse, Landmark, Tangerine,  
Tangerine, Stormberg, Metallika.



# TFlex Tunch Bricks

Introducing Tunch TFlex Bricks with unique features of being flexible & light weight. A perfect way to clad a curved or flat surface for a traditional and elegant aesthetic. TFlex Bricks are anti-seismic and high impact resistant.



**TFlex**  
FLEXIBLE BRICKS



Grand Canyon



Avalanche



Oregon Pebble



Cherry Hill

Product Name	Product Code	Size (in mm)	Thickness	Pcs/Box	Wt/Box	Sqft/Box
Grand Canyon	TBFL 220011	60x225	4 mm	380	23-26 kg	53.80
Avalanche	TBFL 220031	60x225	4 mm	380	23-26 kg	53.80
Oregon Pebble	TBFL 220072	60x225	4 mm	380	23-26 kg	53.80
Cherry Hill	TBFL 220098	60x225	4 mm	380	23-26 kg	53.80



Texas Ranch



Mojave Sand

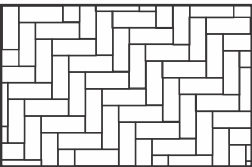


Kingshurst

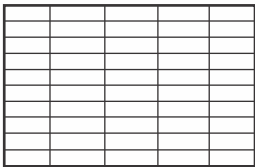
Product Name	Product Code	Size (in mm)	Thickness	Pcs/Box	Wt/Box	Sqft/Box
Kingshurst	TBFL 220002	60x225	4 mm	380	23-26 kg	53.80
Texas Ranch	TBFL 124005	60*240	2.5 mm	420	23-26 kg	64.50
Mojave Sand	TBFL 124011	60*240	2.5 mm	420	23-26 kg	64.50



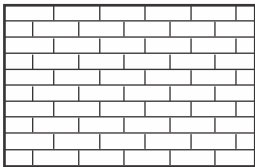
# Bricks Application Patterns



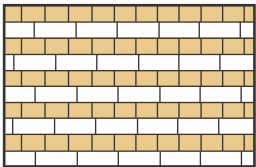
Herringbone



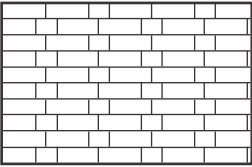
Stack Bond



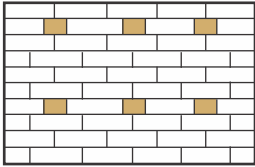
Stretcher Bond



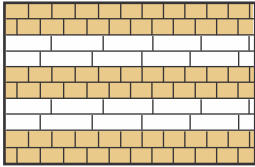
English Cross Bond



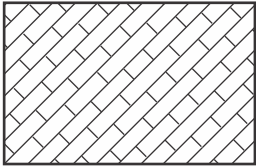
Monk Bond



Flemish Stretcher Bond



Double English Bond



45 Degree Running Bond

	Clay Bricks	Crete Bricks	TFlex Bricks
Composition	80% is Clay	Cement+ Lightweight Aggregate+ Quartz Sand	Clay+Sand+Recycled Fibres
Moulding	Vaccum Extrusion Moulding	Slurry Reverse Moulding	Low Heat Temperature Banding
Firing	Tunnel Kiln. 36 hours of firing	Steam Curing	Unfired
Color Mechanism	Colouring from high temperature burning clay	Colour Pigmentation	Processed Clay
Service Life	Aesthetically beautiful for decades	Weathered Effect	Aesthetically beautiful for decades
Acid-Proof & Alkali-Proof	Excellent	Excellent	Excellent
Moisture Resistance	Excellent	Excellent	Excellent
Recycle Properties	Excellent	Excellent	Excellent
Visual Perception	Natural	Natural	Natural
Heat Preservation	Excellent Good	Excellent	Excellent Good

# How to install bricks

To carry out the work simply, quickly, & properly, you will need the following tools: Spirit level , Ruler, Tooth trowel, Brick layer's trowel, Filling trowel, Pointing brush, Chipping hammer.

## STEP 1



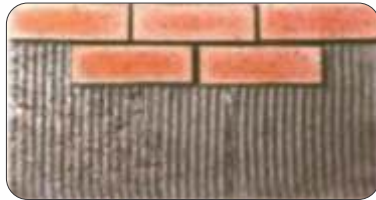
Clear all dirt, oil, grease, or other contaminants and remove all loose plaster, paint and scale on wall. Chip the existing painted wall surfaces with a chipping hammer and brush away all the flaky bits. Ensure that all surfaces are structurally sound.

## STEP 2

Apply a scratch coat to cover and level any uneven wall surfaces if necessary and allow it to set prior to applying the adhesive mortar. Prepare the adhesive mortar according to the manufacturer's instructions. Be careful that you add appropriate amount of water/latex in order to achieve good workability. Apply the mortar and level with a flat side of a trowel to about 10 mm thick, comb the surface with the notched side of the tooth trowel and remove the excess mortar.



## STEP 3



Press the Tunch Brick firmly and evenly onto the wall surface so that the mortar behind squeezes out around its sides. Use a gentle wiggling action whilst pressing to ensure a strong bond between Tunch Bricks and wall surface.

## STEP 4

Use a small brush (about 8mm diameter & wet constantly) to smooth the mortar in the gaps between Tunch Bricks while the mortar is still wet. If you want to grout the joints, use a grouting pallet tool to carefully fill in the joints with mortar. If you prefer coloured joints, oxide colorants can be mixed with the mortar. Take care not to dirty the Tunch Bricks surface as cleaning is a hassle. Use a round or flat pointing tool to finish the joints when the mortar is thumb print hard. Do not work on the joints too soon or the mortar will smear. Lastly, brush away any loose or excess dry mortar.

**Adhesive application:** Use reputed make of adhesives ( Laticrete. Mapei, Sika, Ardex Endura, Kerakol, Pidilite etc.) specifically as per substrates, for instance plywood plastered wall, metal etc.