

# NUANCED BEAUTY

**NEW  
COLLECTION**







# EVOLUTION/MILESTONES OF STYLAM

1991

Golden Laminates Limited started operations as Private Limited Company.

1995

Listed in (Bombay Stock Exchange) BSE within four years of Inception.

1996

Recognized as an 'Export House' by the Government of India.

2001

Expanded as Global Entity with Pan India presence & thriving Export market.

2010

Company name changed to Stylam Industries Limited.

2012

First ever Indian manufacturing Company to Introduce HPL Exterior Cladding with brand name '**Fascia**'.

2013

- Introduces its premium sub brand '**VIOLAM**'
- Fascia HPL Exterior Cladding expanded distribution network Pan India & soon became Top Selling Brand across Nation.

2017

- Stylam Launched range of Restroom Cubicles & Lockers & became India's First manufacturer with 1860 x 4320 mm Panel Size with brand '**Cuboid**'
- Stylam Industries Limited expanded its operations and started its Asia's Largest Manufacturing Plant located at Manaktabra, Panchkula spread across 36 Acres.
- Stylam Industries Limited introduced range of Specialty Laminates with MR+ Gloss, Mirror, Magnetic & Anti Finger Laminates.

2018

Introducing and adding new product line of Acrylic Solid Surfaces (India's First Manufacturer) by brand **GRANEX**.





# USP OF STYLAM

- Asia's biggest Infrastructure & manufacturing plant of Laminates.
- Largest capacity of hydraulic press in India having 24 daylight openings in following size 1220 x 2440 mm, 1300 x 2850 mm, 1300 x 3050 mm, 1860 x 3660 mm & 1860 x 4320.
- Credibility of more than 25+ years in Industry.
- Having Global presence in more than 60+ Countries.
- Over 2500 + Design, 80 + Textures & Finishes.
- Having range of High Pressure Laminates, Cubicles board, HPL Exterior Cladding, Acrylic Solid Surfaces.
- State of art technology & manufacturing of acrylic solid surfaces.
- We have multiple finishes available in High Gloss, Metallic, Anti-bacterial, Chalkboard, FR, electrostatic, magnetic, mirror, translucent, chemical retardant laminates.
- Stylam Laminates Uniform and superior sanding ensure best bonding with substrates.



---

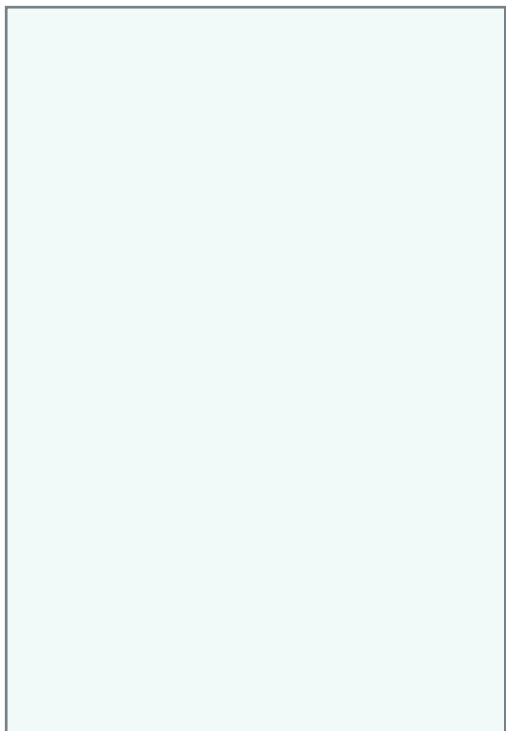
25+ years spent pursuing the ethos, 'what the spirit commits, perseverance completes' is what has shaped Stylam Industries Limited. Incepted in the year 1991 under the name of Golden Laminates Private Ltd, we started our success story by manufacturing decorative laminated sheets for both residential as well as industrial applications. Today, under the brand name **STYLAM** we have been combining industrious efforts, wide experience and innovative product customization to consistently deliver quality and satisfaction to our clients. Dealing in post forming, anti-static, anti fungal and anti bacterial and chemical resistant laminates, Stylam is a name trusted for unmatched laminates that suit every budget. We are reputed to be a global entity with a Pan India presence and a thriving export market in more than 60 countries. Our major customers are in Europe, Far East, Middle East, Russia & North America and we continue to maintain robust YOY growth. We have our state-of-the-art infrastructural plant at Panchkula in North India. Our manufacturing unit has world-class machines and equipments and assures maximum production of laminates in minimum time and our machines are operated by highly skilled and best in the class workmen. Since 25 years, we have been developing high quality products.



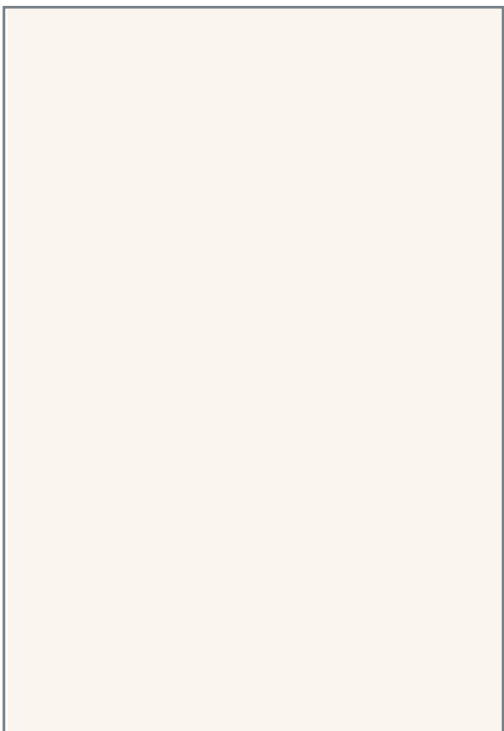


A leader is defined not by the outlook but it is the finer details which sum up the true nature of a leader. A leader manifests his ability in every sphere, molding with every environment and lending it the winning touch. A true leader delivers beyond expectations and transforms perceptions. Like a true inspiration, our 'Leader' range of laminates reflect the true essence of a leader with details and styles envisaged to transform living spaces. Lending beauty, aesthetics and sheer glamour to modern interiors, this range is made for 21st century. Designed to compliment modern architecture, Leader Laminates cater to every taste and every architectural nuance. From brilliant colours, intrinsic design and awe-inspiring textures, our range of laminates will re-define beauty with every minute detail.

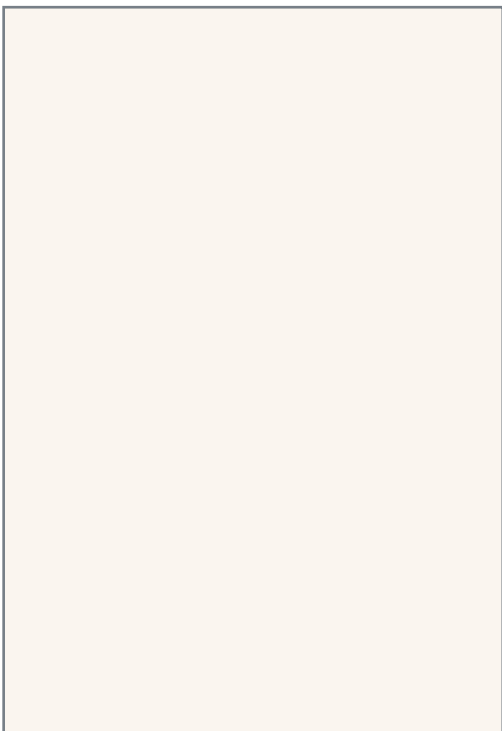
# MIRROR SOLIDS



**AZURE WHITE** 101 / MI



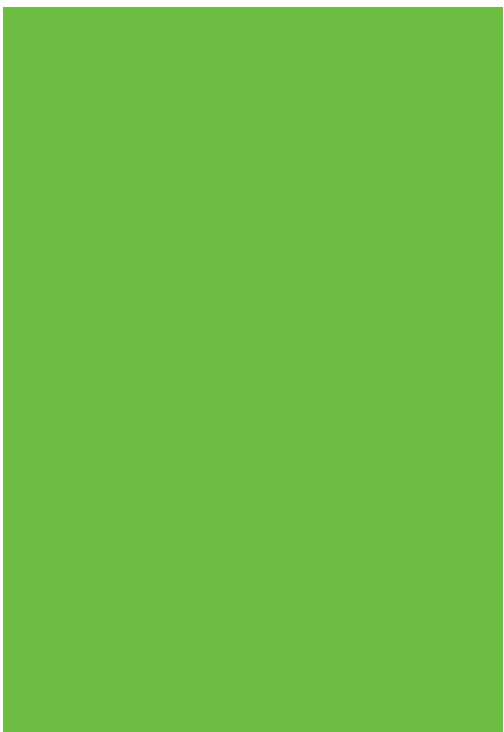
**SANDAL WHITE** 111 / MI



**CREAMY WHITE** 1005 / MI



**SUNNY GOLD** 194 / MI



**SWADESHI GREEN** 195 / MI

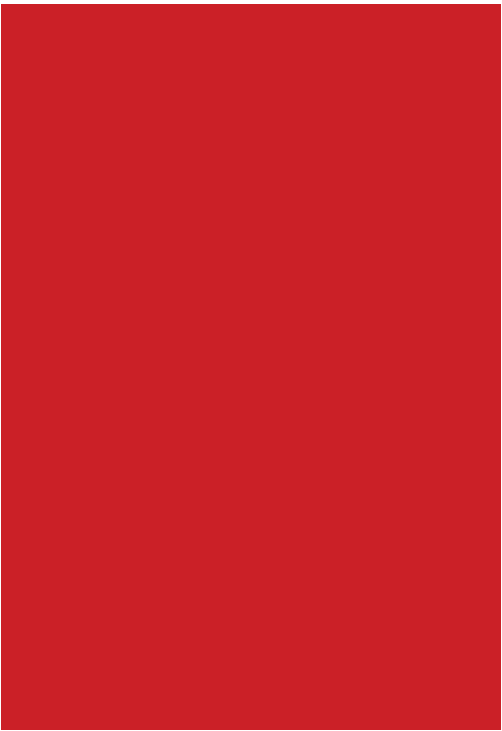


**ROYAL INK** 529 / MI

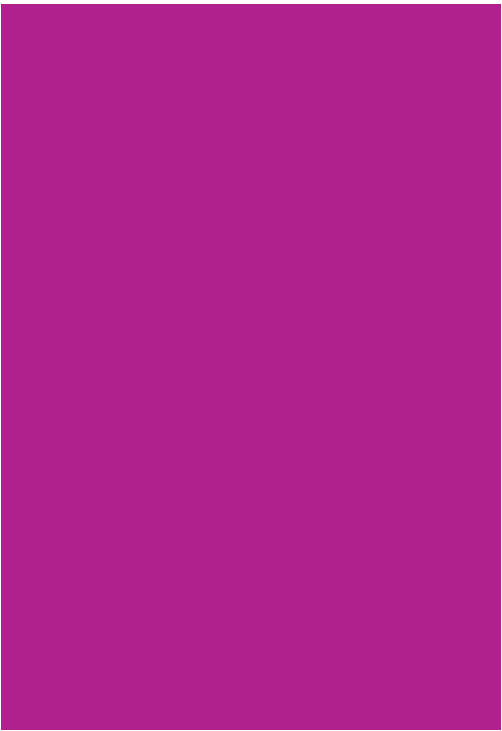




PINK BLOSSOM 570 / MI



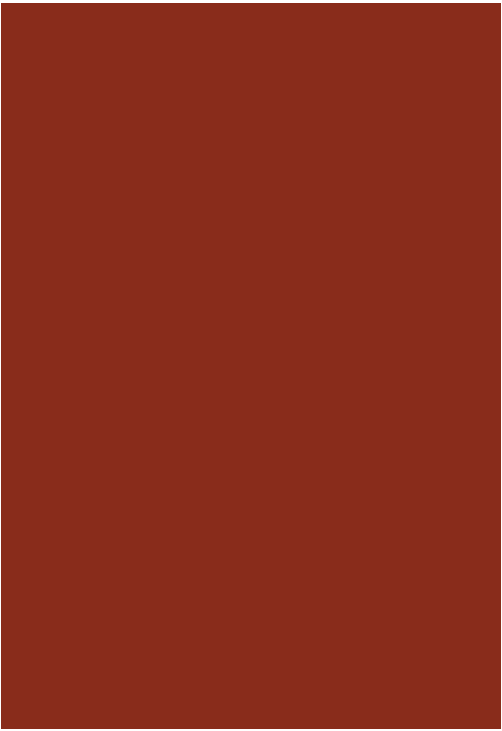
ROBINHOOD RED 572 / MI



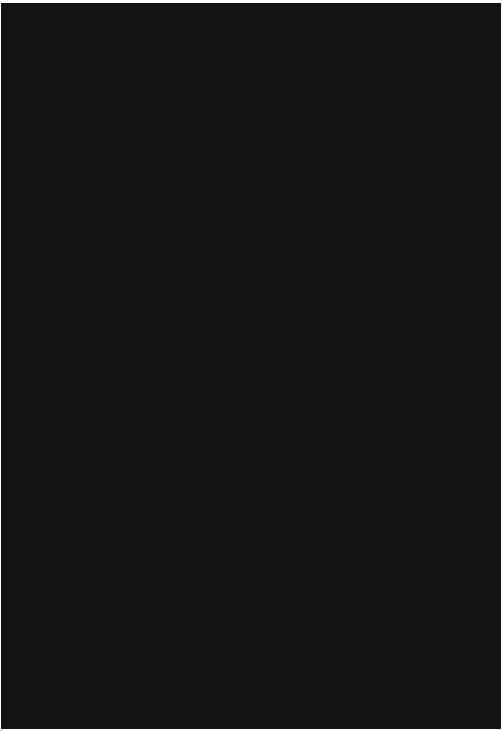
QUEEN MAGENTA 574 / MI



FLORO ORANGE 1055 / MI



DARK FANTASY 575 / MI



BLACK MAGIC 142 / MI

# MIRROR WOODGRAIN



STORK WENGE 1943 / MI



LIGHT URBAN TREE 2416 / MI



GOLD URBAN TREE 2415 / MI



TWILIGHT WENGE 2024 / MI





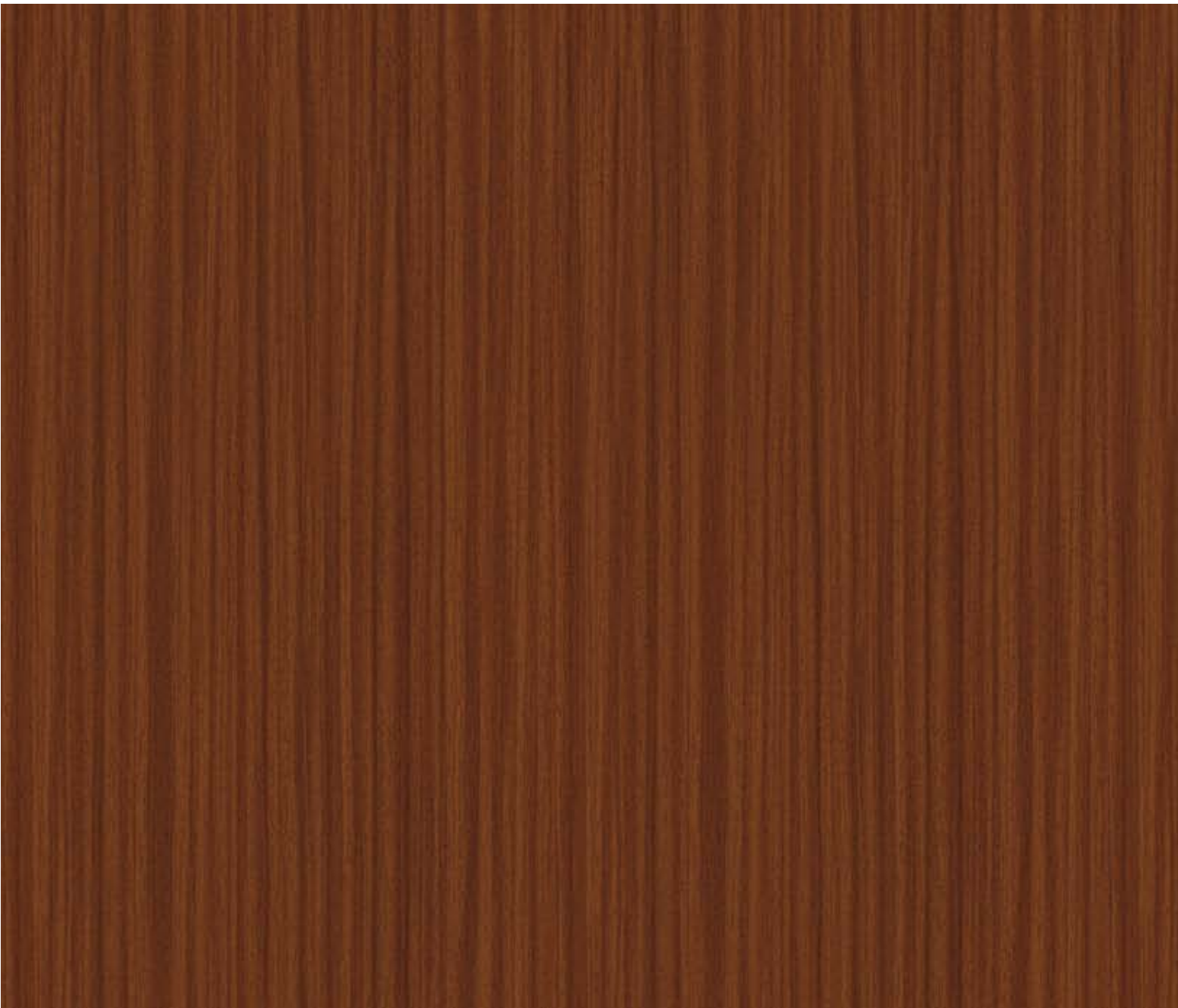
CHOCOLATE TEAK .....  
1982 / MI



CHOCOLATE TEAK 1982 / MI



EURO LINE 2109 / MI



ICE SAPELE 2119 / MI

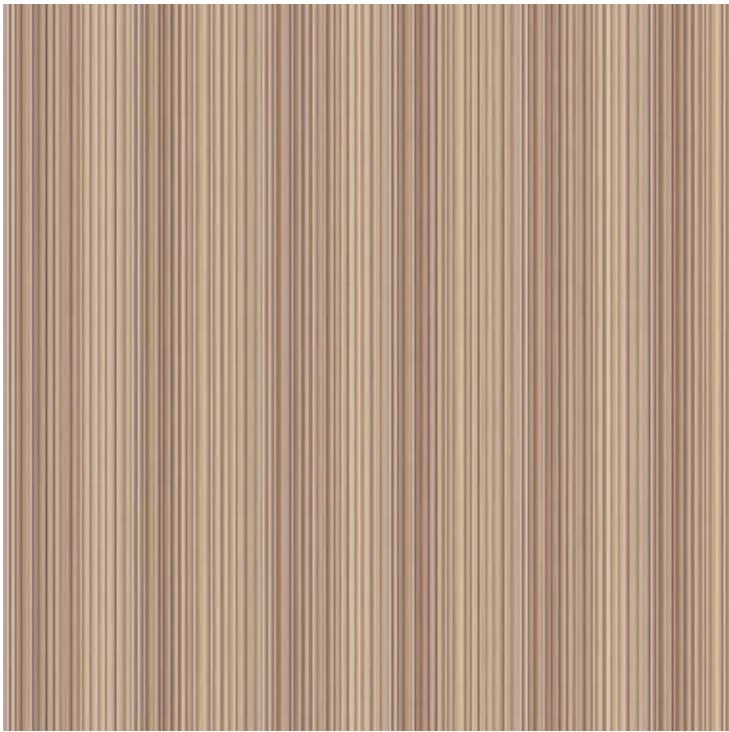


COLONIAL BEECH 2103 / MI





ORCHARD STRIPES 2030 / MI



COSMIC DESERT 2154 / MI



COCO WOOD 2147 / MI



SOFT LIMBA 2149 / MI





**AROSA PINE 2121 / MI**



**FINE EUROLINE 2145 / MI**





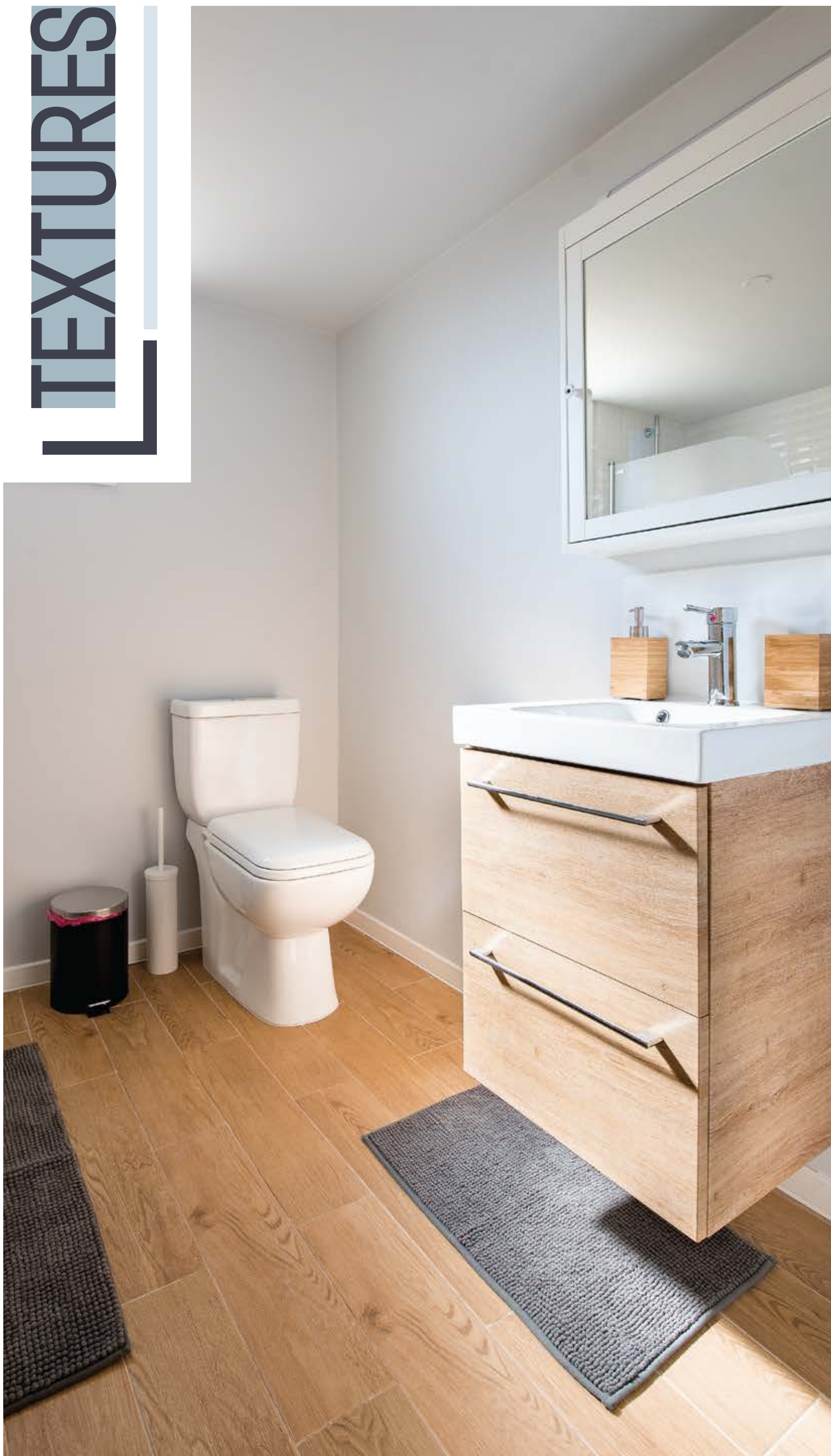


OAK CHAMONY 1992 / MI



MYSTEAK 1970 / MI

# TEXTURES





# CYPRUS

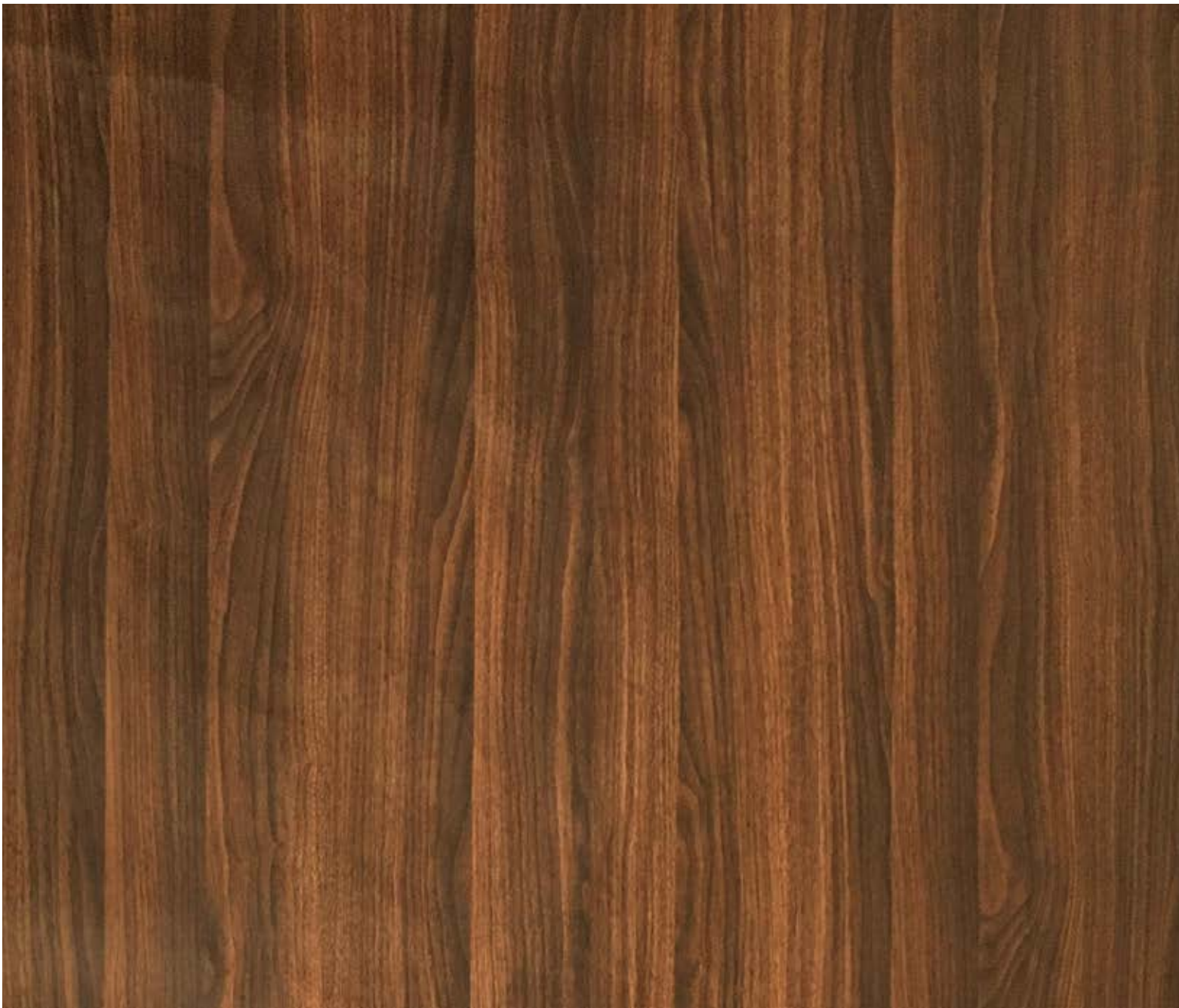


**NEW** GEMINI TEAK 2459 / CY



**NEW** HYDRA TEAK 2461 / CY





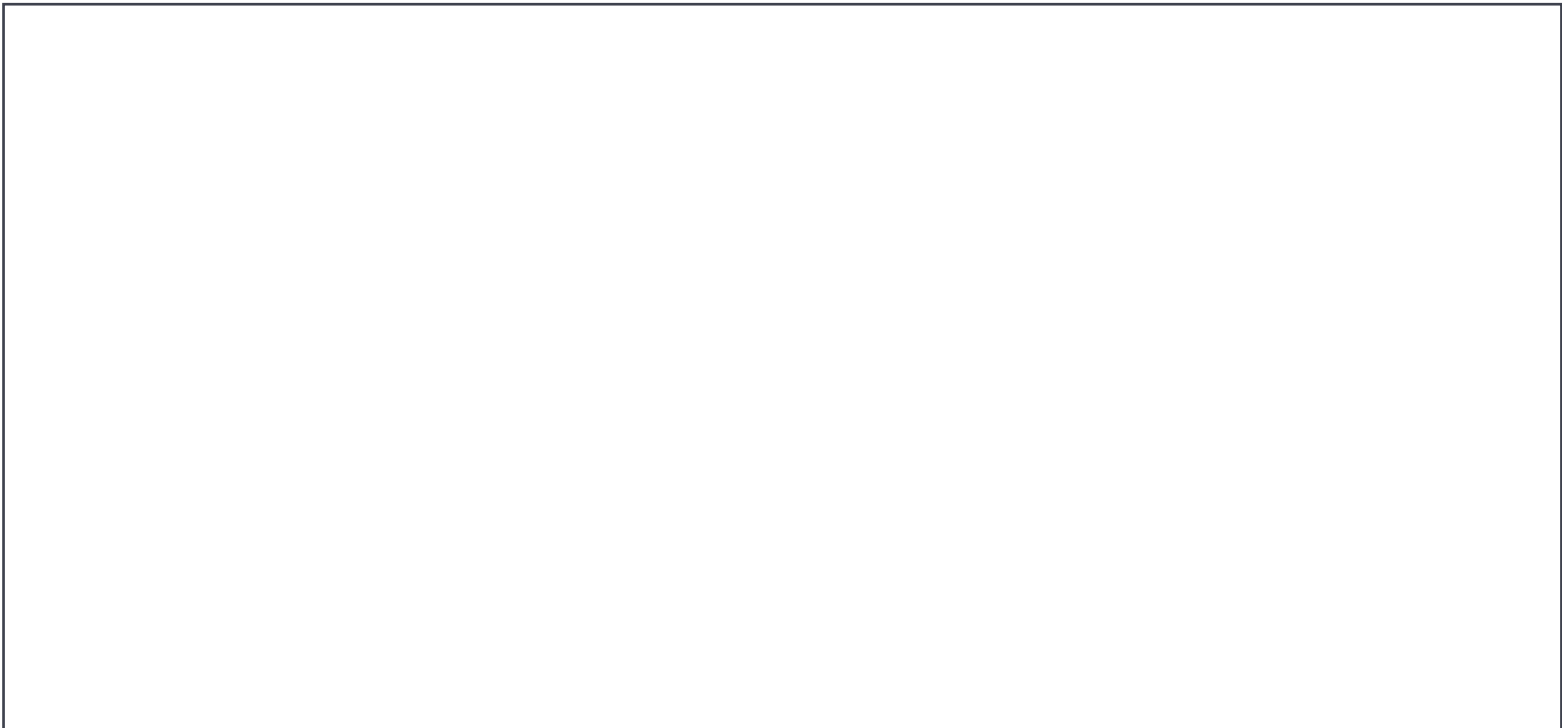
**NEW** COCOA TEAK 2460 / CY



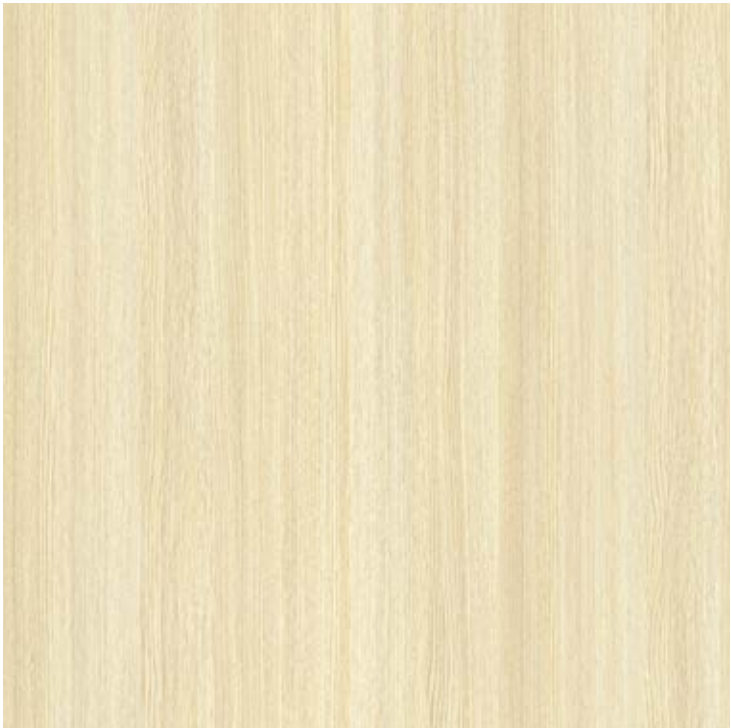
**NEW** AURIGA TEAK 2457 / CY



# SCRIPT



**MYSTEAK 1970 / ST**



**WILLOW OAK 1937 / ST**



**NATURAL WENGE 2138 / ST**



**DUTCH OAK 2023 / ST**

# GALEGO



WILD WOOD 2108 / GG



ONTARIO WALNUT 2157 / GG



COLOMBIA WALNUT 2144 / GG



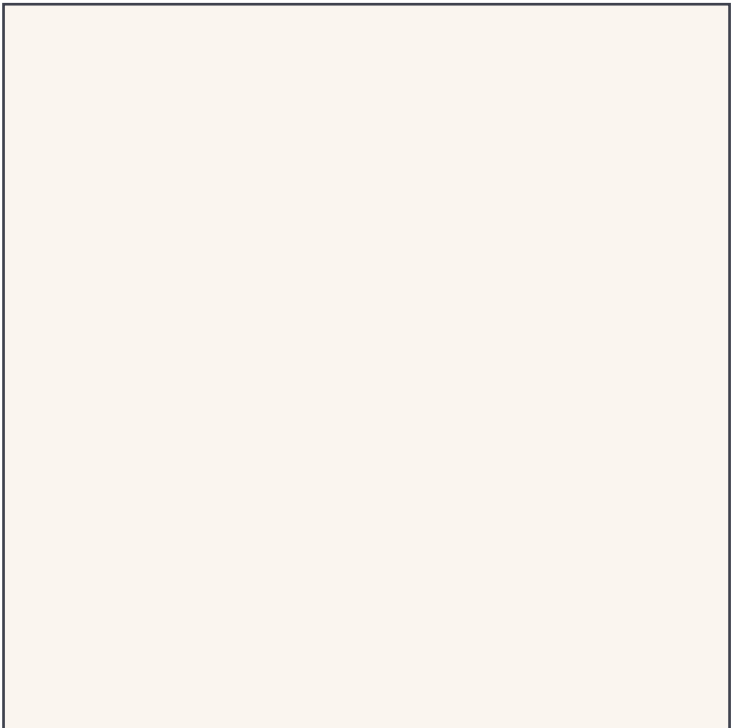
EUROPEAN CHERRY 2128 / GG



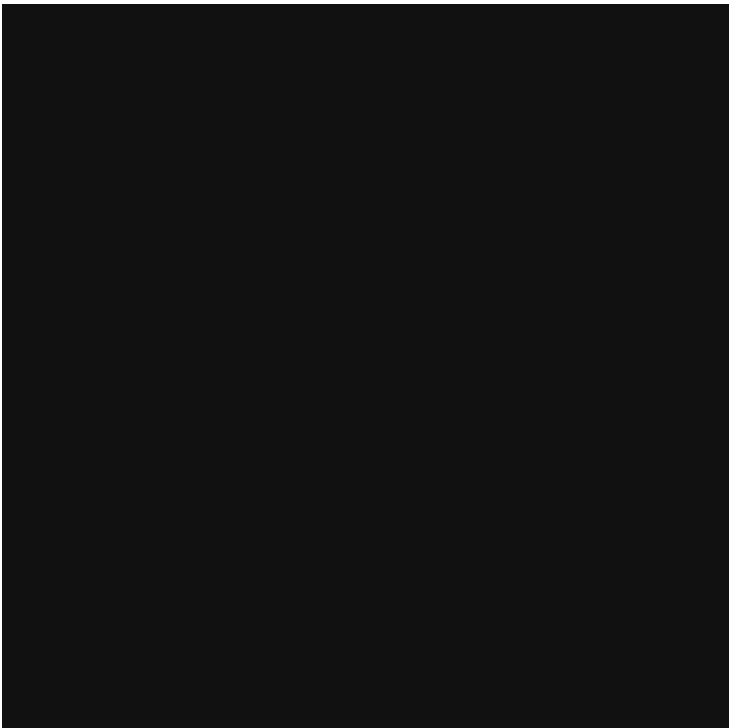
ZEBRA WOOD 2174 / GG



# CUBIC



CREAMY WHITE 1005 / CB



BLACK MAGIC 142 / CB



CANARY LINE 2062 / CB

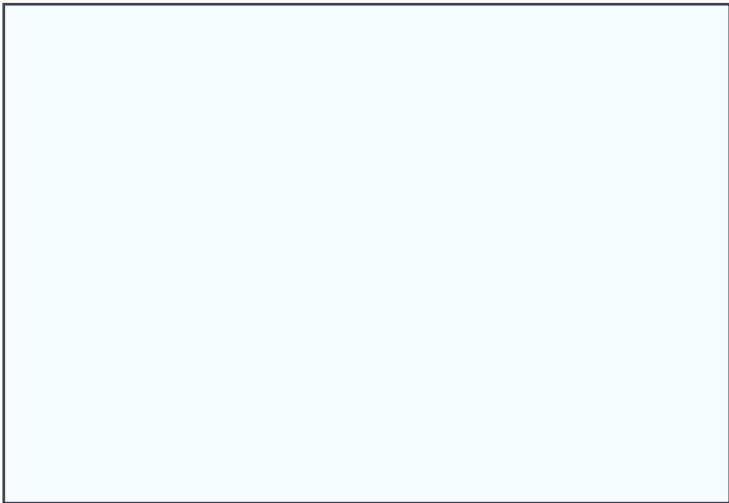


MAPLE MAGIC 2033 / CB



ONTARIO WALNUT 2157 / CB

# SATIN WEAVE



**AZURE WHITE 101 / SW**



**CREAMY WHITE 1005 / SW**



**ROBINHOOD RED 572 / SW**



**BLACK MAGIC 142 / SW**



# DECO



**BRITISH WALNUT** 2031 / DC



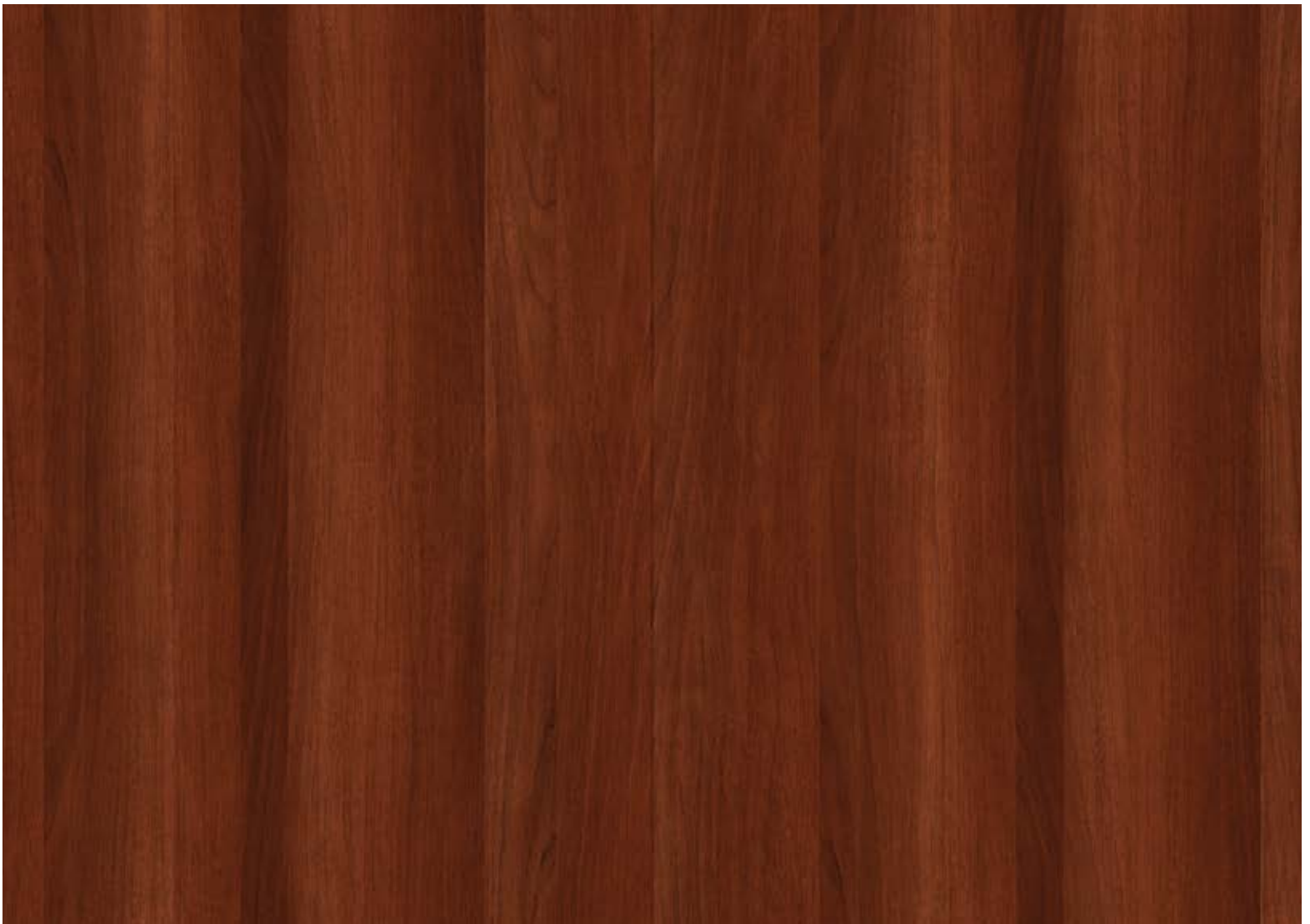
**CHARCOAL TEAK** 2094 / DC



**OAK CHAMONY** 1992 / DC



CHERRY TEAK 2017 / DC



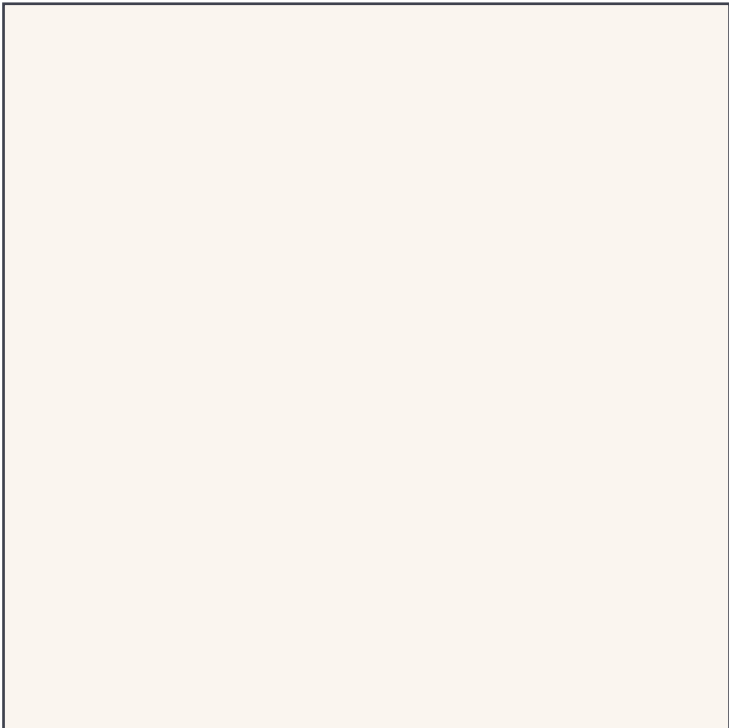
MAPLE MAGIC 2033 / DC



# RING



**ROBINHOOD RED** 572 / RN



**SANDAL WHITE** 111 / RN

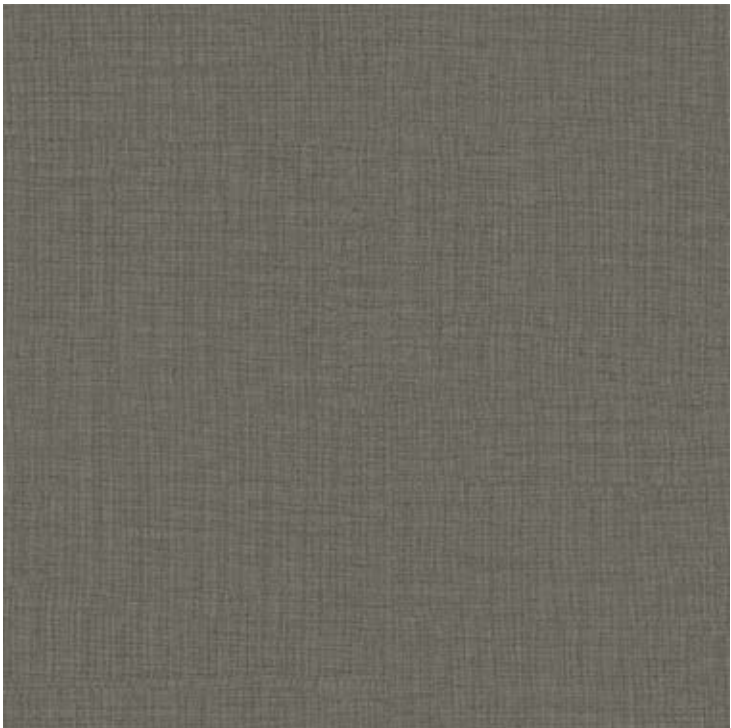


**BLACK MAGIC** 142 / RN



**FLOWER WENGE** 2000 / RN

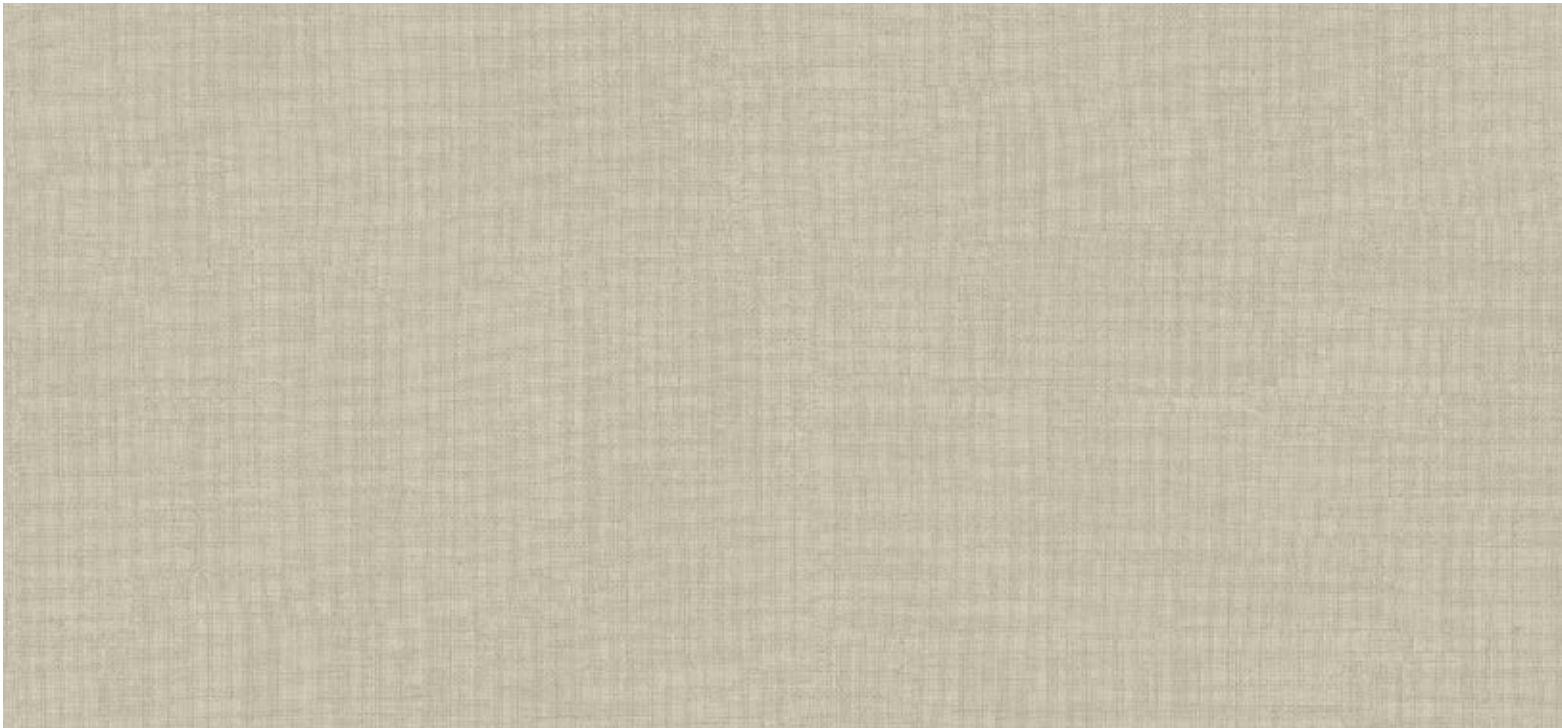
# BROCADE



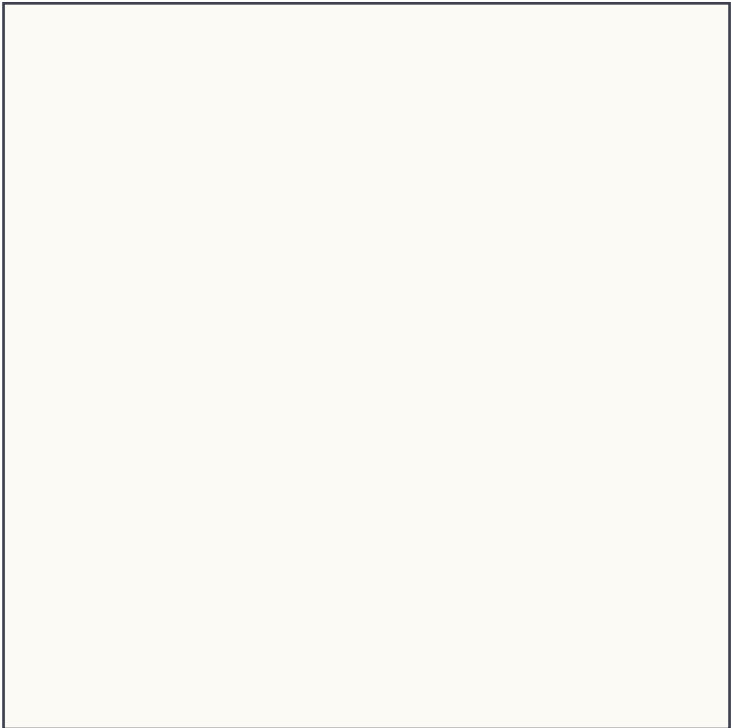
TWEED DARK 1354 / BC



MAPLE MAGIC 2033 / BC



TWEED GREY 1353 / BC



CREAMY WHITE 1005 / BC



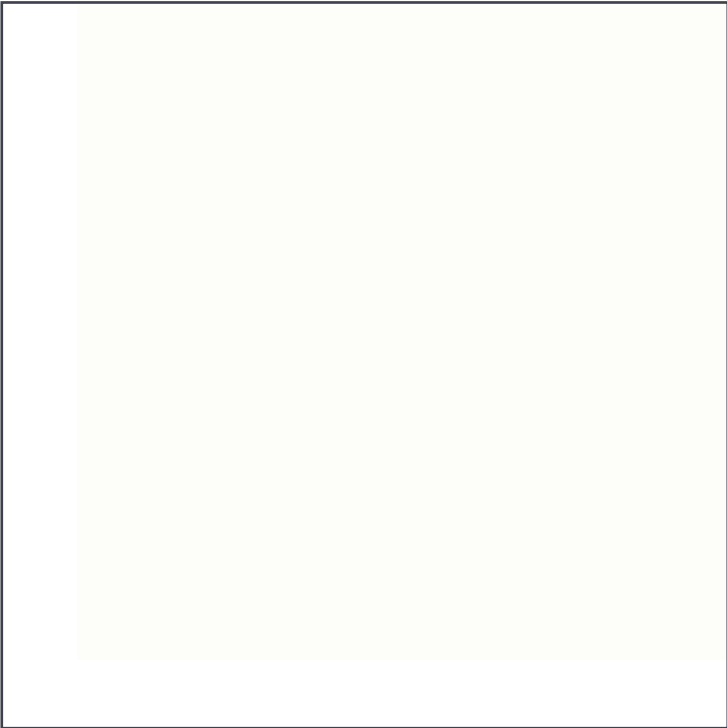
NOBLE LINOSA 2038 / BC



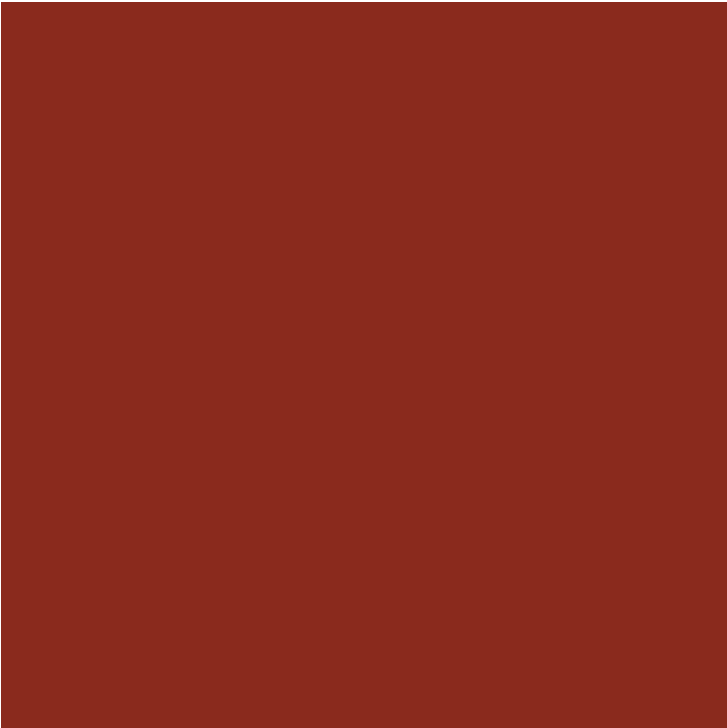
# WAVES



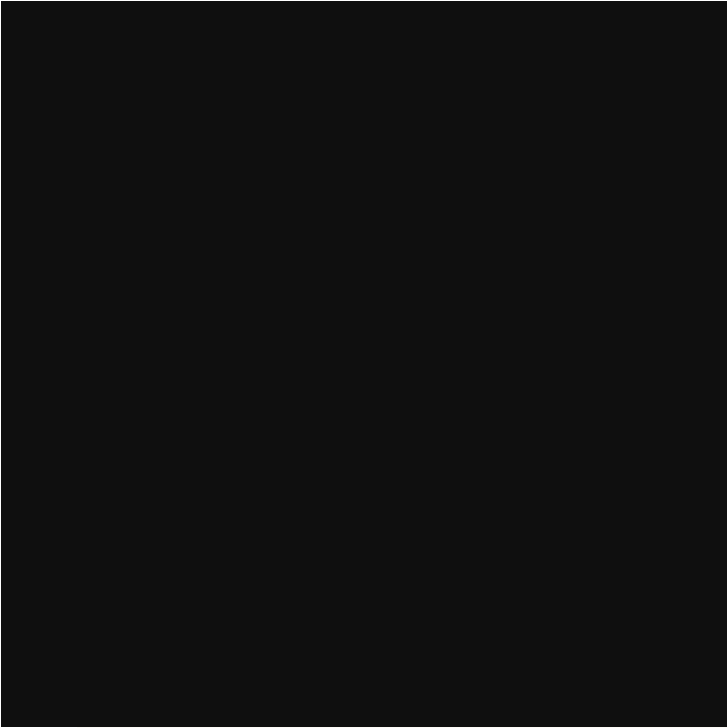
CREAMY WHITE 1005 / WV



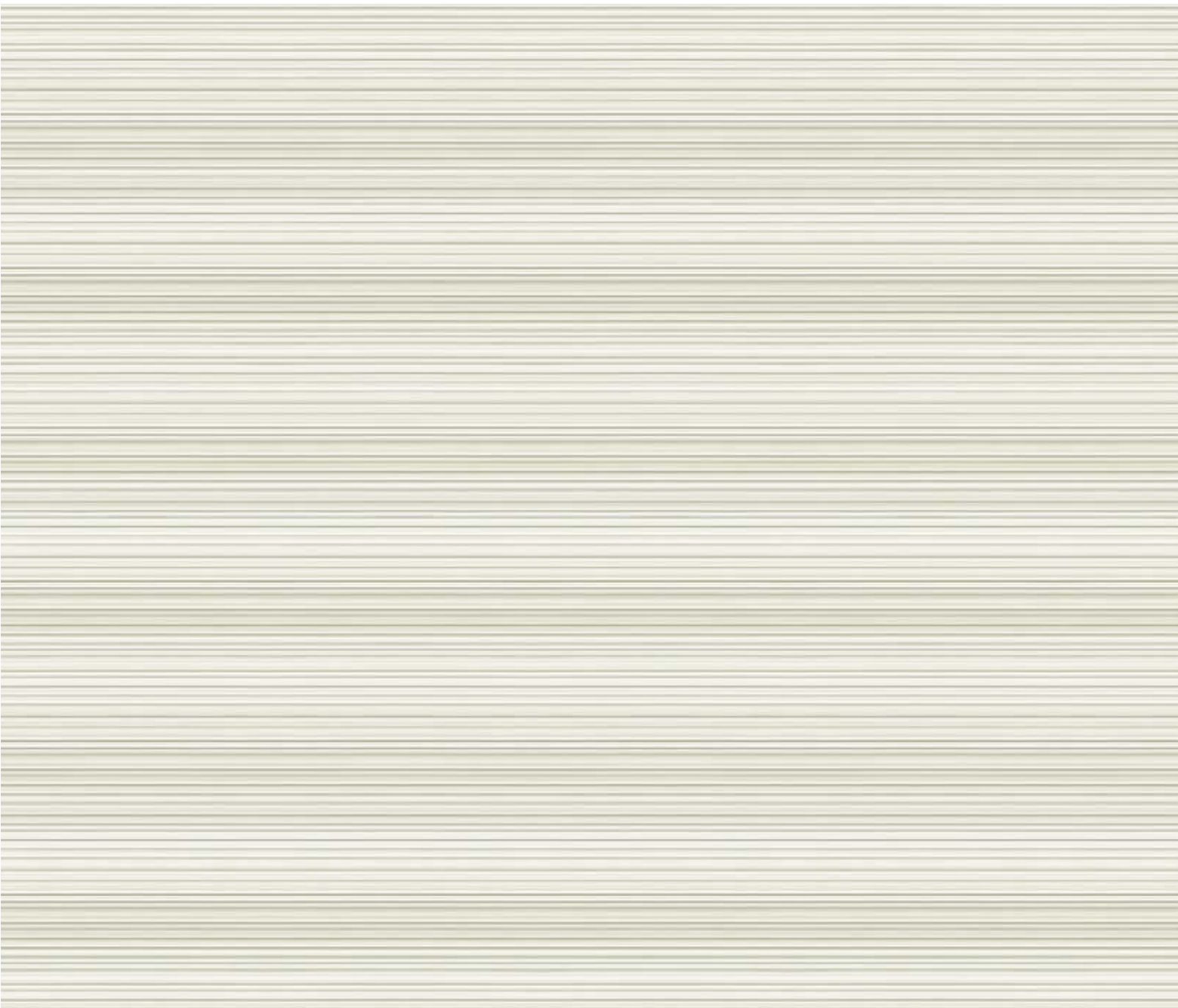
CREAMY WHITE 1005 / WV



DARK FANTASY 575 / WV



BLACK MAGIC 142 / WV



COSMIC GLACIER 2152 / WV



OAK CHAMONY 1992 / WV



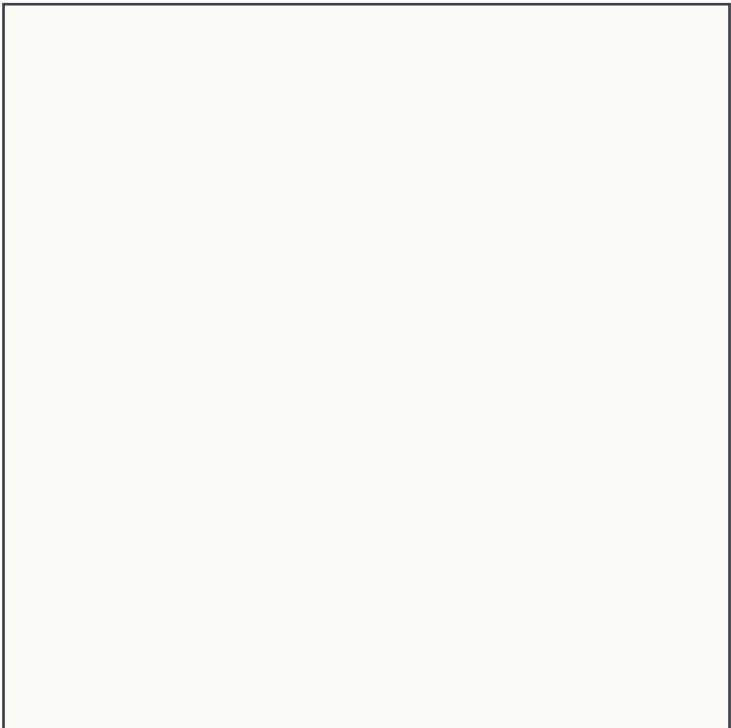


•..... RUSTY WALNUT  
2015 / WV



RUSTY WALNUT 2015 / WV

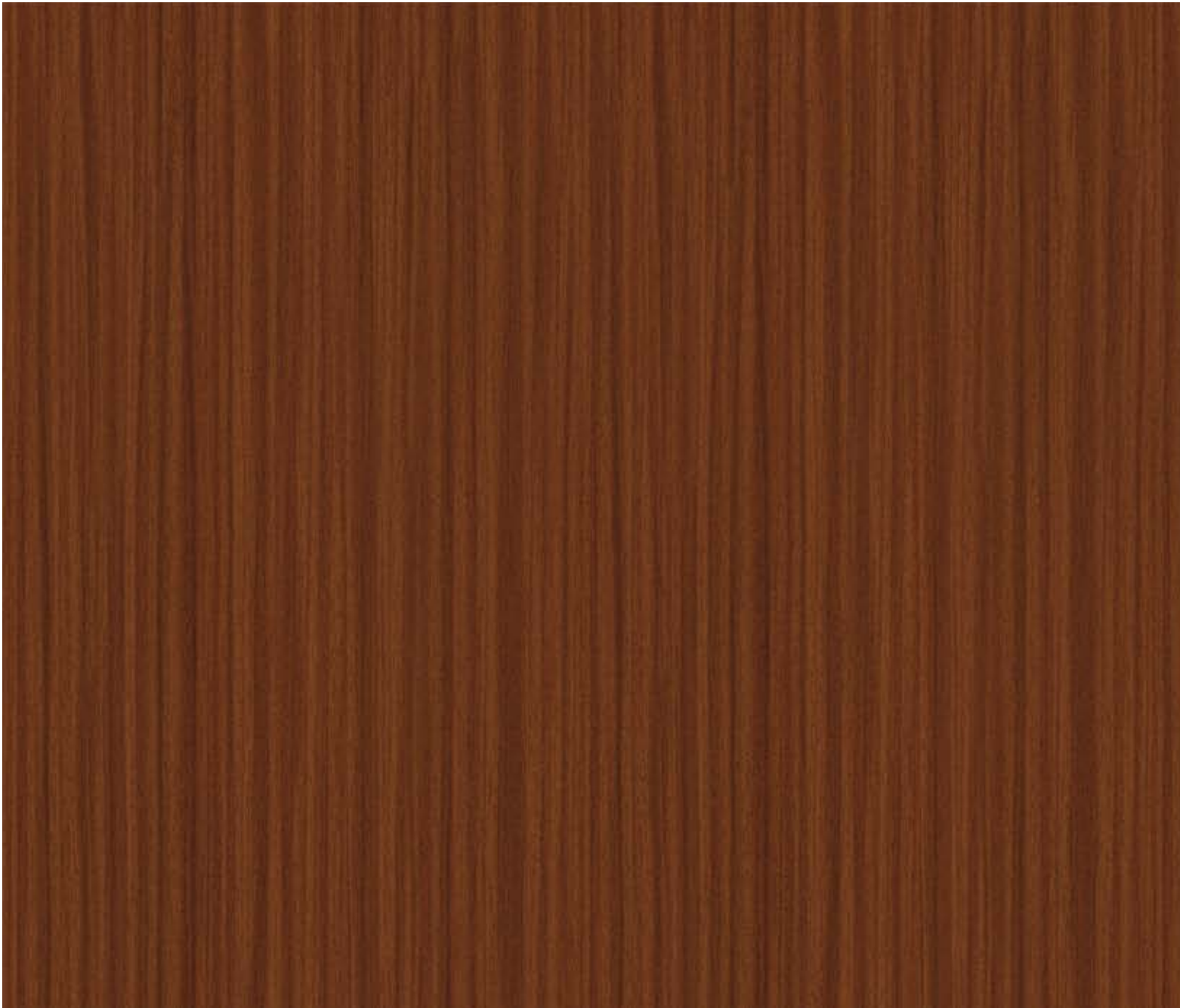
# PEARL



SANDAL WHITE 111 / PL



PINK BLOSSOM 570 / PL



ICE SAPELE 2119 / PL

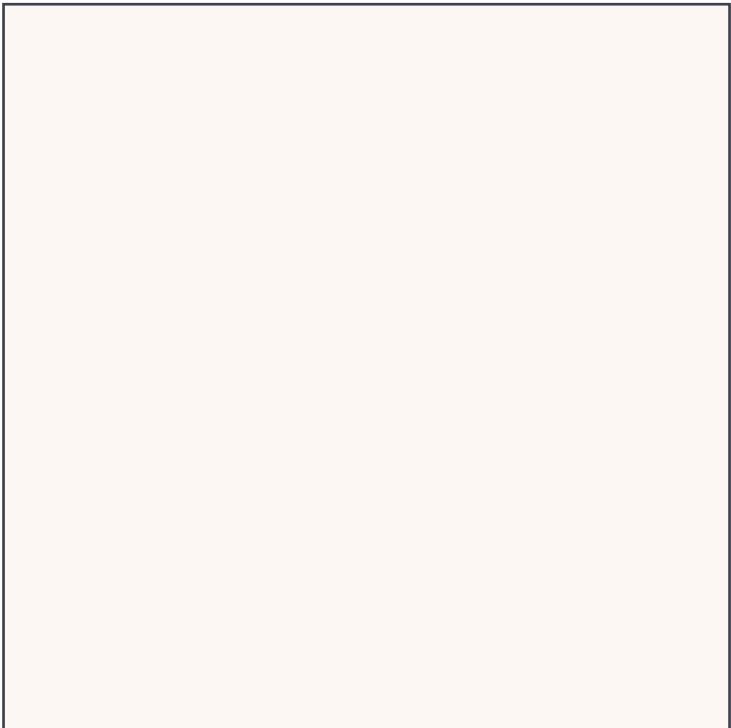






ICE SAPELE .....  
2119 / WV

# SHEEN



**SANDAL WHITE** 111 / SH



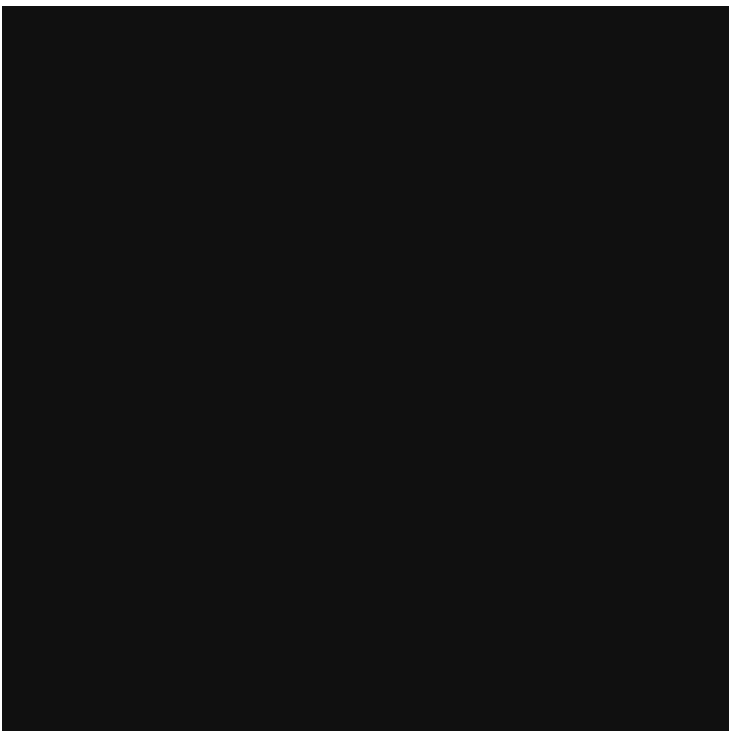
**PINK BLOSSOM** 570 / SH



**AROSA PINE** 2121 / SH



**DARK FANTASY** 575 / SH



**BLACK MAGIC** 142 / SH



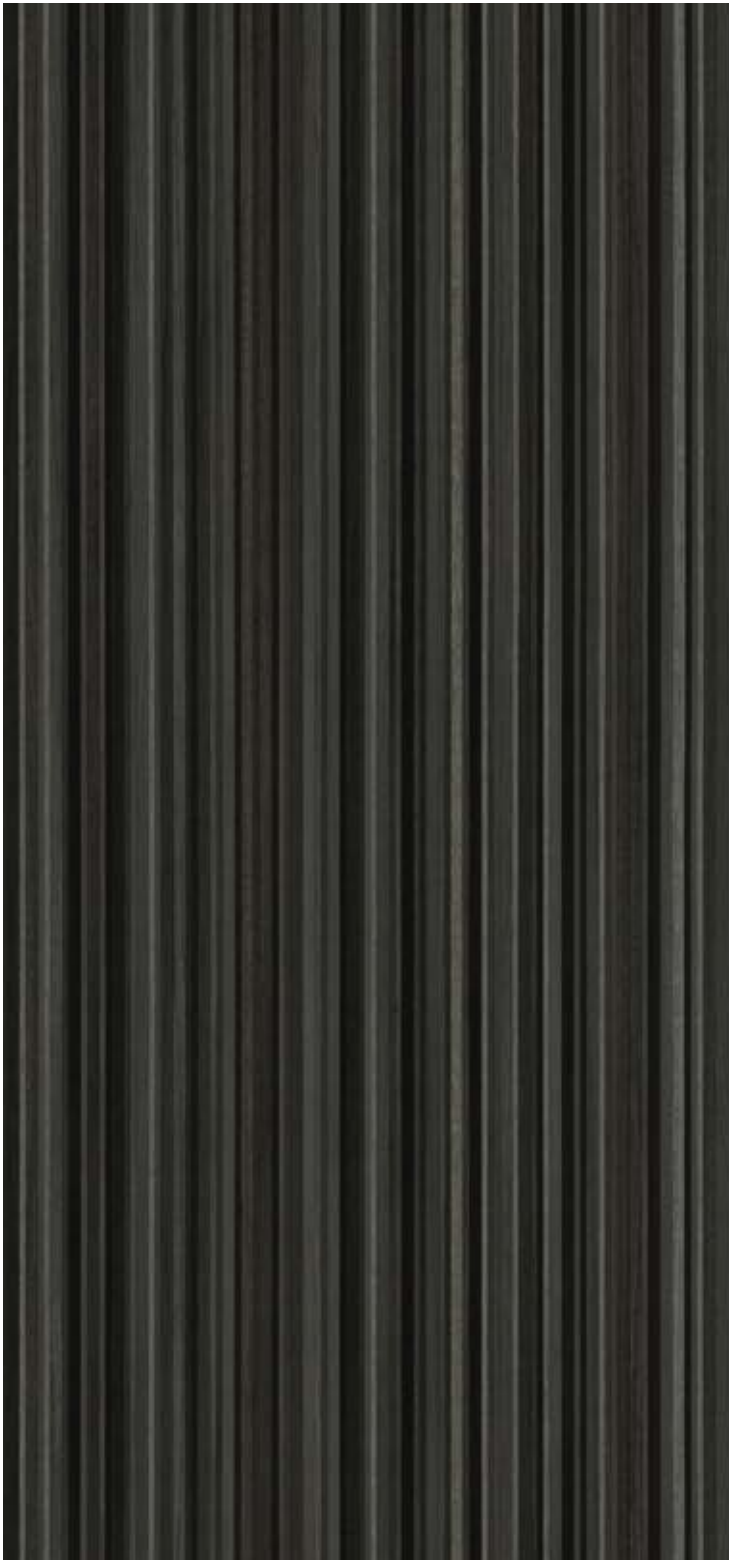
# BAMBOO



**PLANKED WOOD 2141 / BB**



**OAK CHAMONY 1992 / BB**



**PLANKED CHARCOAL 2142 / BB**



**EURO LINE 2109 / BB**

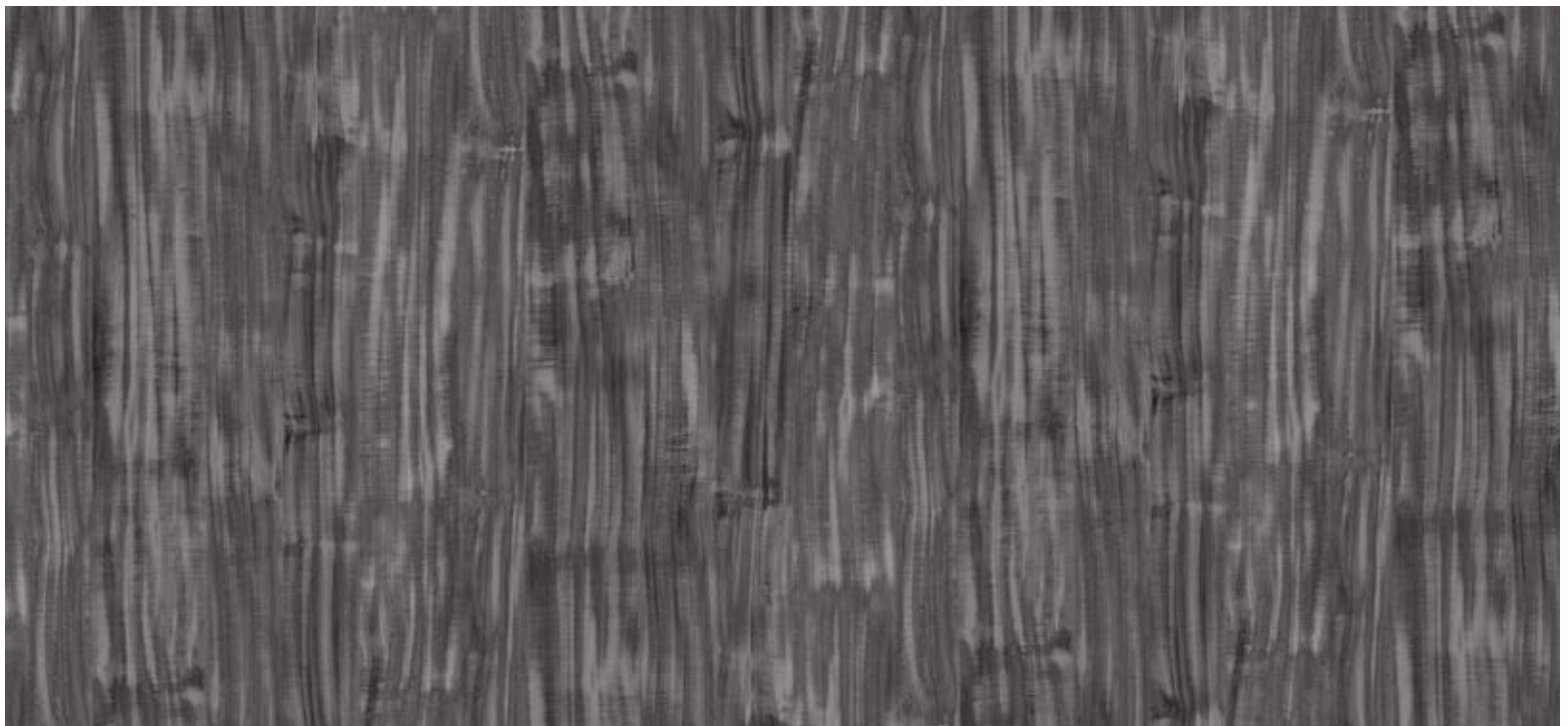
# CROSS STEAKS



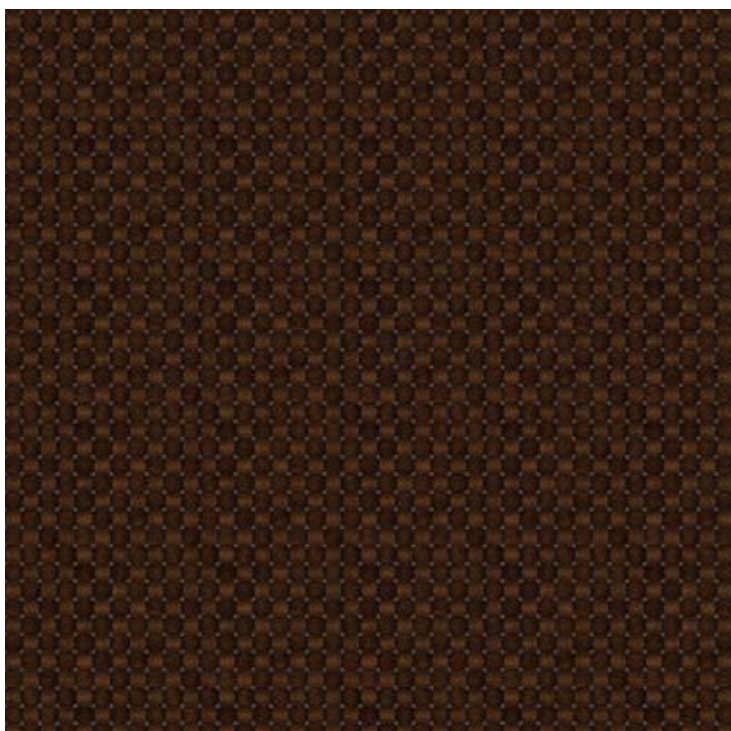
**LIGHT URBAN TREE 2416 / CS**



**GOLD URBAN TREE 2415 / CS**



**KONA WOOD 2414 / CS**



**WALNUT CROSS 1972 / CS**



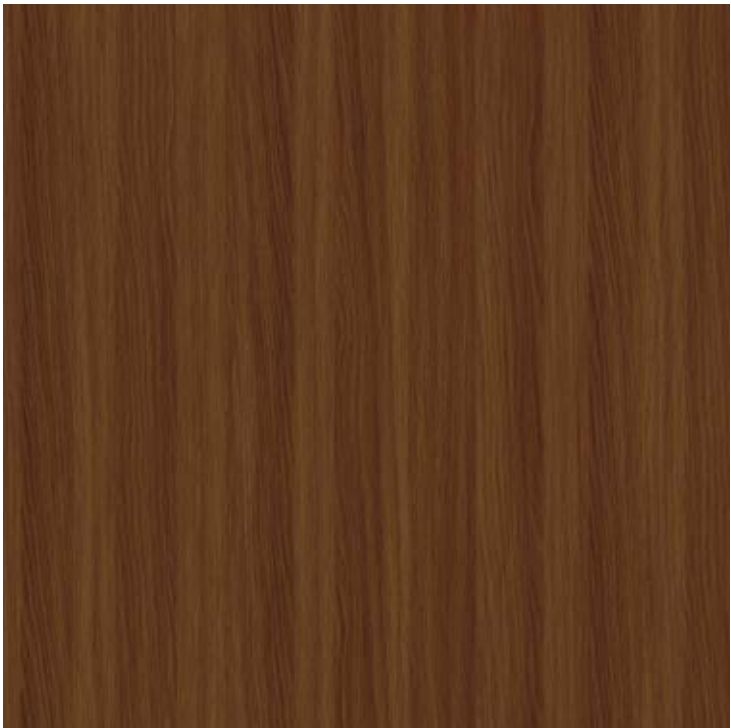
**CANARY LINE 2062 / CS**





•..... KONA WOOD  
2414 / CS

# WINNING STEAKS



PERSIAN VERTICAL WOOD 2194 / WS



LIGHT URBAN TREE 2416 / WS



BROWN WOOD LOG 2406 / WS



TIGER SKIN 2191 / WS





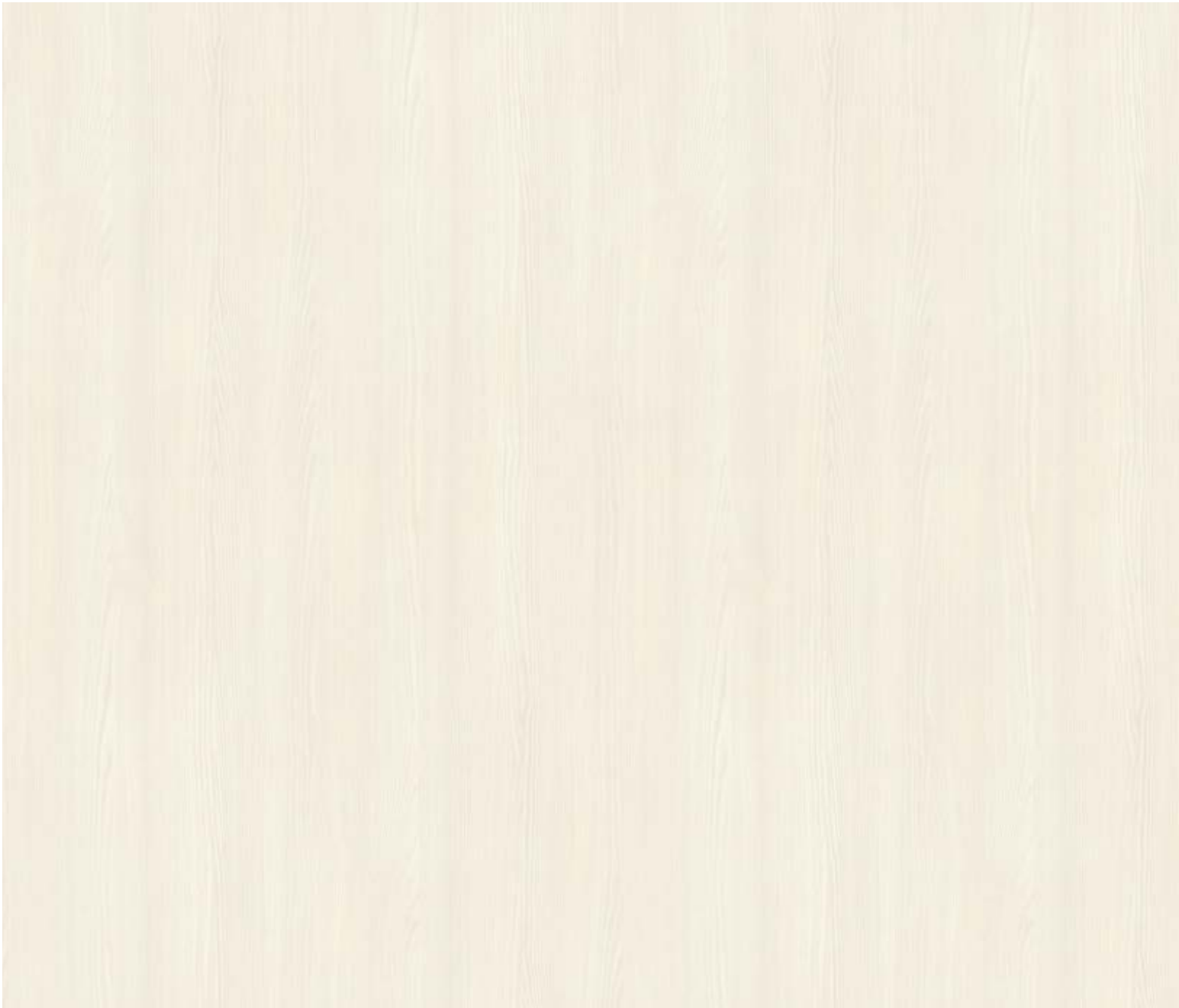
GOLD URBAN TREE 2415 / WS



•..... GOLD URBAN TREE  
2415 / WS

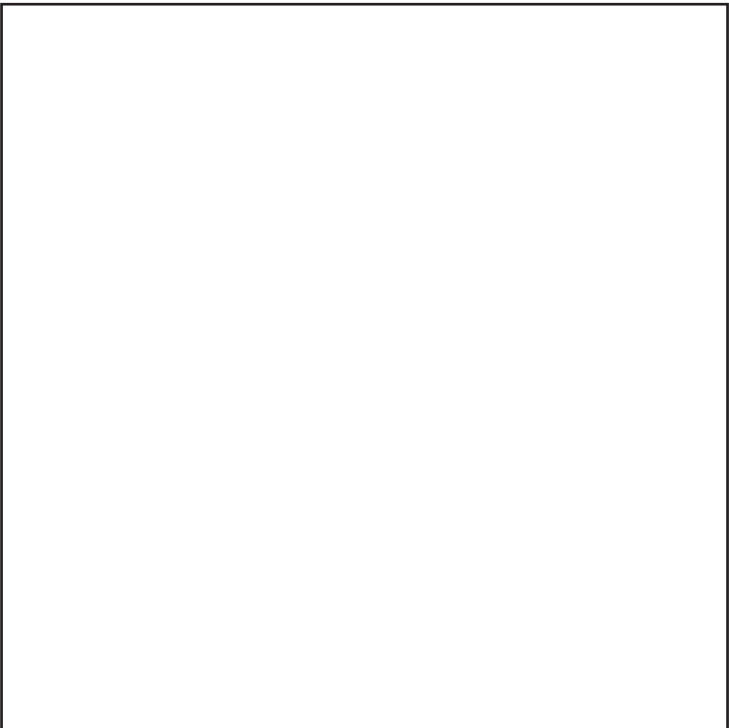


# WAVES HORIZONTAL



PRECIOUS PINE 1963 / WH





AZURE WHITE 101 / WH



ROBINHOOD RED 572 / WH



CONDENSE WENGE 1946 / WH

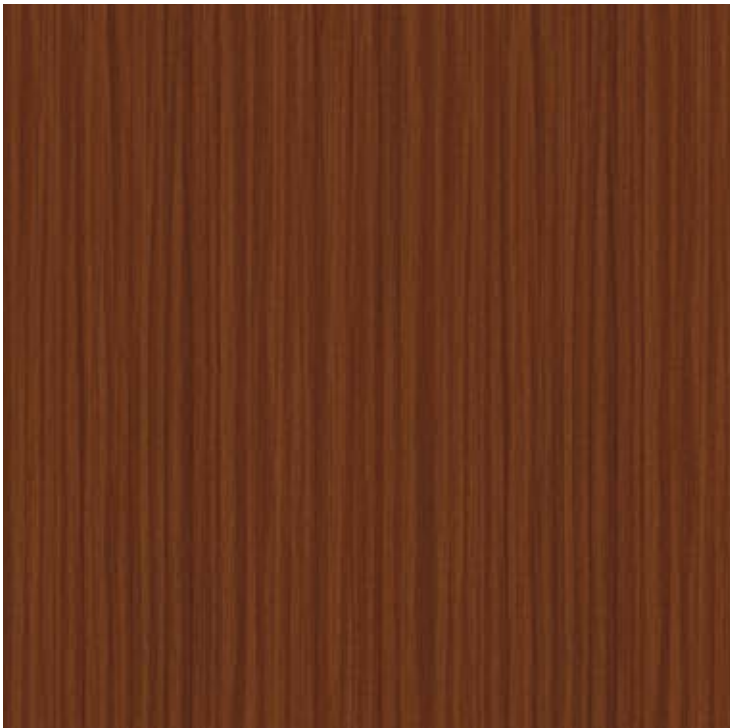


CHARCOAL TEAK 2094 / WH

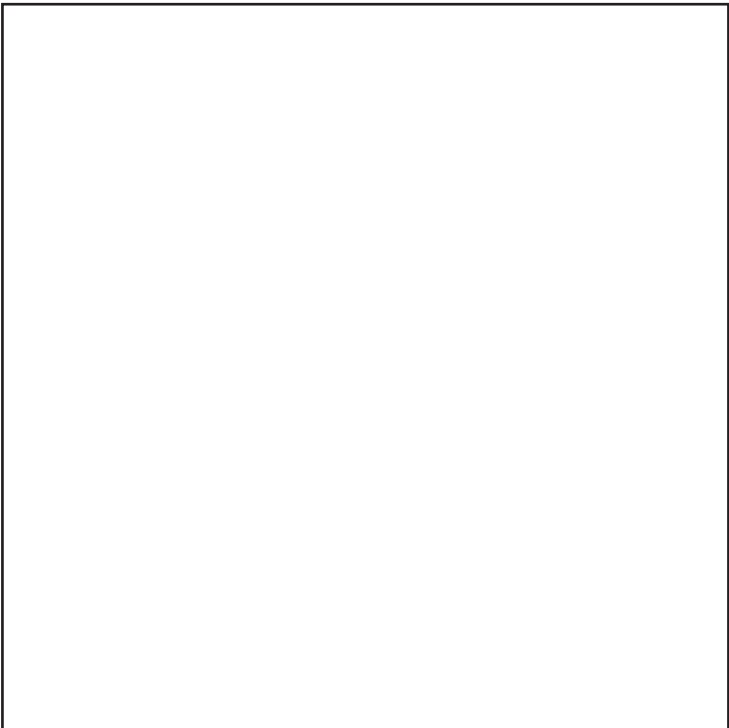


NOBLE TEAK 2044 / WH

# CAMO



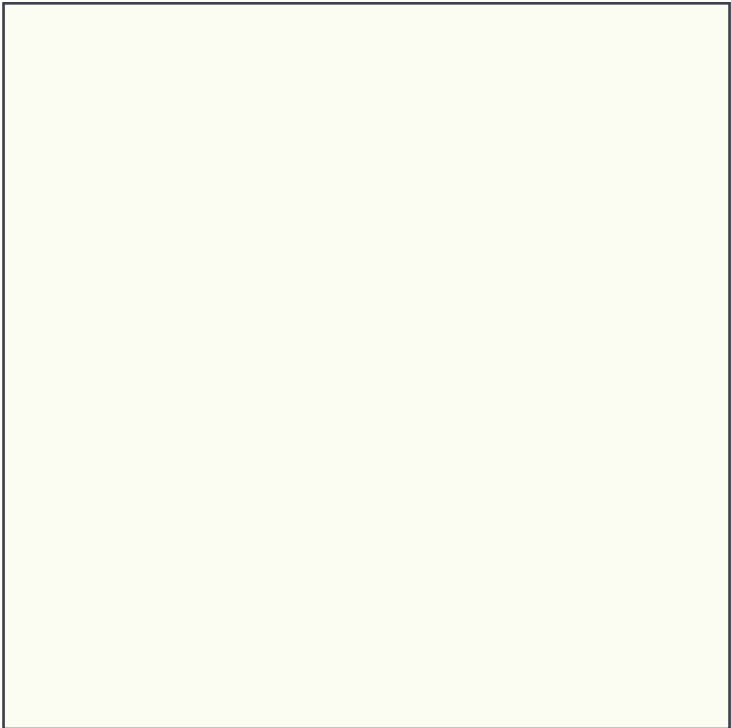
ICE SAPELE 2119 / CM



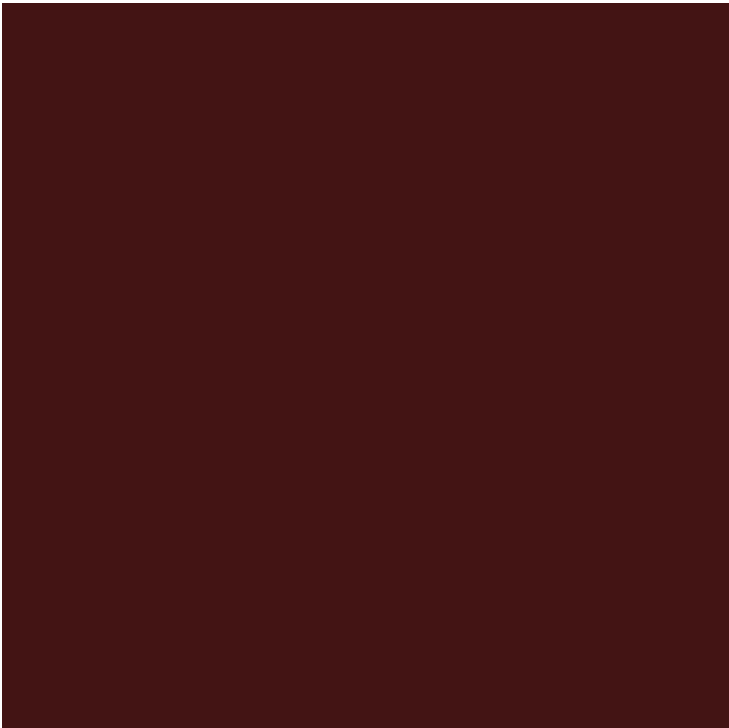
JAISALMER BROWN 1017 / CM



MAPLE MAGIC 2033 / CM



CREAMY WHITE 1005 / CM



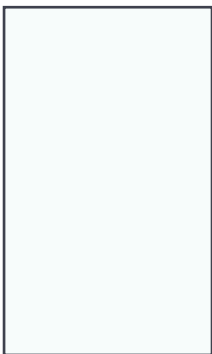
DARK CHOCOLATE 539 / CM



# SOLIDS



**SUPER WHITE**  
S-103 / SD



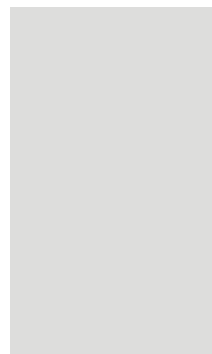
**AZURE WHITE**  
101 / SD



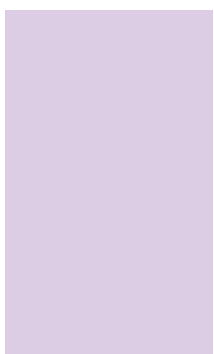
**CREAMY WHITE**  
1005 / SD



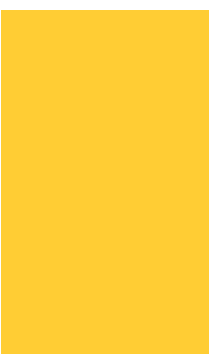
**SANDAL WHITE**  
111 / SD



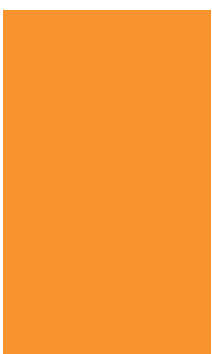
**ALUMINA GREY**  
120 / SD



**MAGIC MOVE**  
193 / SD



**SUNNY GOLD**  
194 / SD



**FLORO ORANGE**  
1055 / SD



**CLASSIC SAFFRON**  
571 / SD



**SWADESHI GREEN**  
195 / SD



**DARK CHOCOLATE**  
539 / SD



**DARK FANTASY**  
575 / SD



**PINK BLOSSOM**  
570 / SD



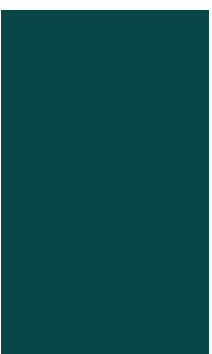
**QUEEN MAGENTA**  
574 / SD



**ROBINHOOD RED**  
572 / SD



**POLAR BLUE**  
564 / SD



**ROYAL INK**  
529 / SD



**TWILIGHT BLUE**  
566 / SD



**NAVY BLUE**  
1056 / SD



**BLACK MAGIC**  
142 / SD



# WOODGRAIN





# OAK



DUTCH OAK 2023 / SD



•..... DUTCH OAK  
2023 / SD



**WILLOW OAK 1937 / SD**



**GENUS OAK 2132 / SD**



**OAK BRIGHT 2131 / SD**



**OAK CHAMONY 1992 / SD**



**DENSE OAK 1965 / SD**



# WALNUT



..... ORLANDO WALNUT  
1981 / SD



ORLANDO WALNUT 1981 / SD



COLOMBIA WALNUT 2144 / SD



CLASSIC WALNUT 2028 / SD



TROPICAL WALNUT 1991 / SD



CANADIAN WALNUT 1994 / SD

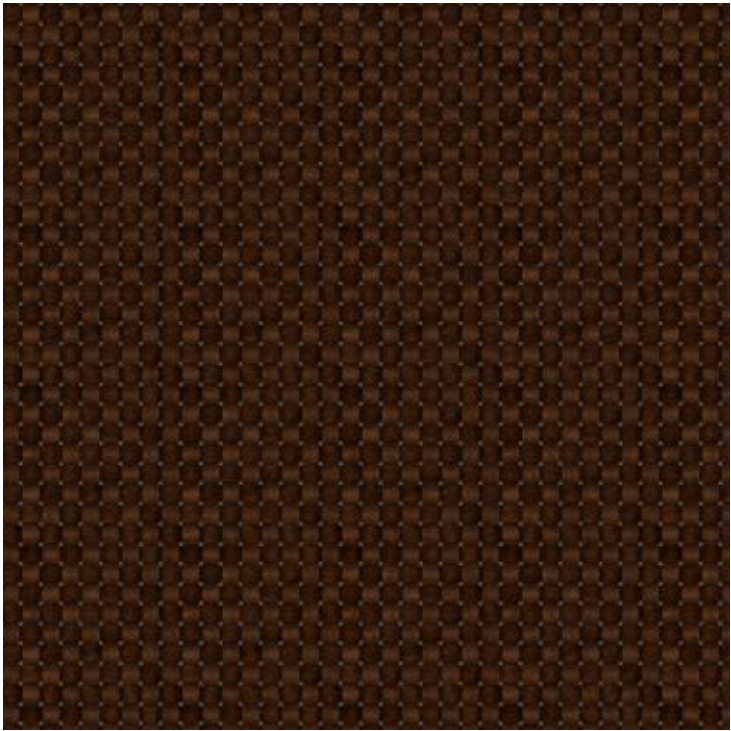




COCO WOOD 2147 / SD



BRITISH WALNUT 2031 / SD



WALNUT CROSS 1972 / SD



RUSTY WALNUT 2015 / SD



FANCY UMBER 2134 / SD



EURO LINE 2109 / SD



# TEAK DELIGHT



SHALIMAR TEAK 1971 / SD



NOBLE TEAK 2044 / SD



TIGER SKIN 2191 / SD



PERSIAN VERTICAL WOOD 2194 / SD



**STORM TEAK 1959 / SD**

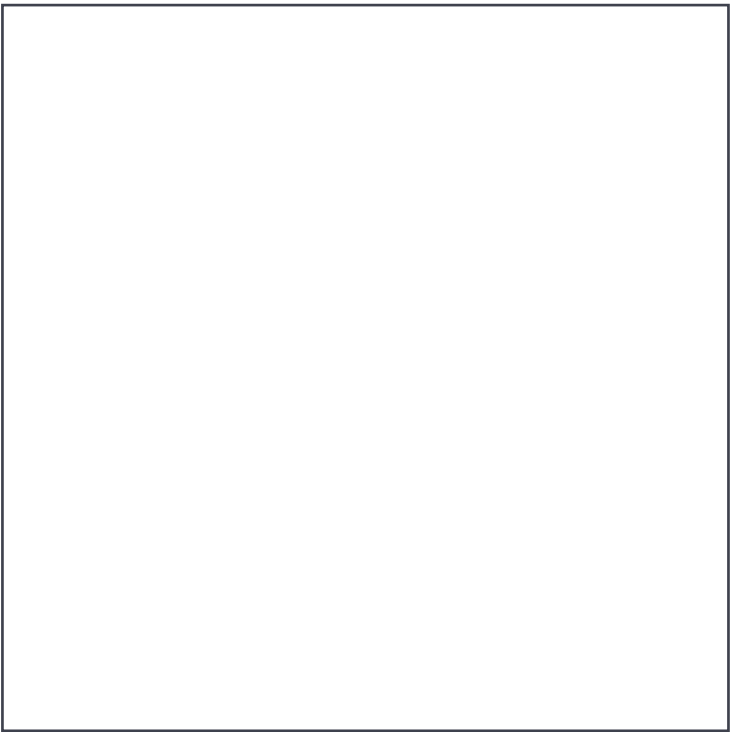


**THAI TEAK 2137 / SD**





SHINE TEAK 1973 / SD



MYSTEAK 1970 / SD



FUAGWA 2032 / SD



CHOCOLATE TEAK 1982 / SD





•..... BURMA TEAK  
2123 / SD



BURMA TEAK 2123 / SD





CHERRY TEAK 2017 / SD



CHARCOAL TEAK 2094 / SD



FANCY WOOD 2133 / SD



WILD COCO 2148 / SD



# MAPLE



**GOLDEN MAPLE** 1968 / SD



**CHEST NUT** 2051 / SD



**CREAMY MAPLE** 2002 / SD



**ORCHARD STRIPES** 2030 / SD



# PINE



**LIGHT PINE** 2025 / SD



**PRECIOUS PINE** 1963 / SD

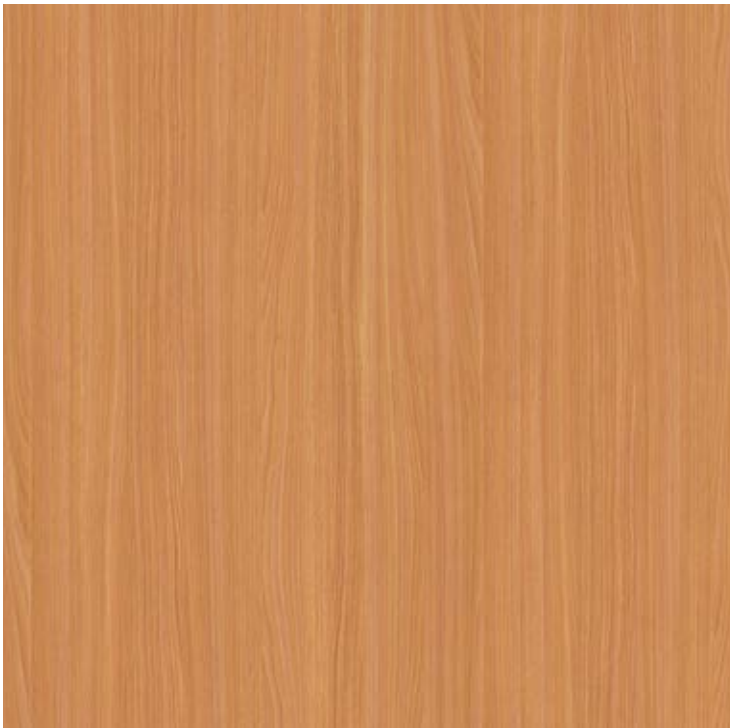


**CHOCO PINE** 1993 / SD



**TRUE PINE** 2042 / SD

# BEACH



**JAPAN BEECH** 1989 / SD



**GOLDEN BEECH** 1916 / SD



**BROWNNY BEECH** 1954 / SD

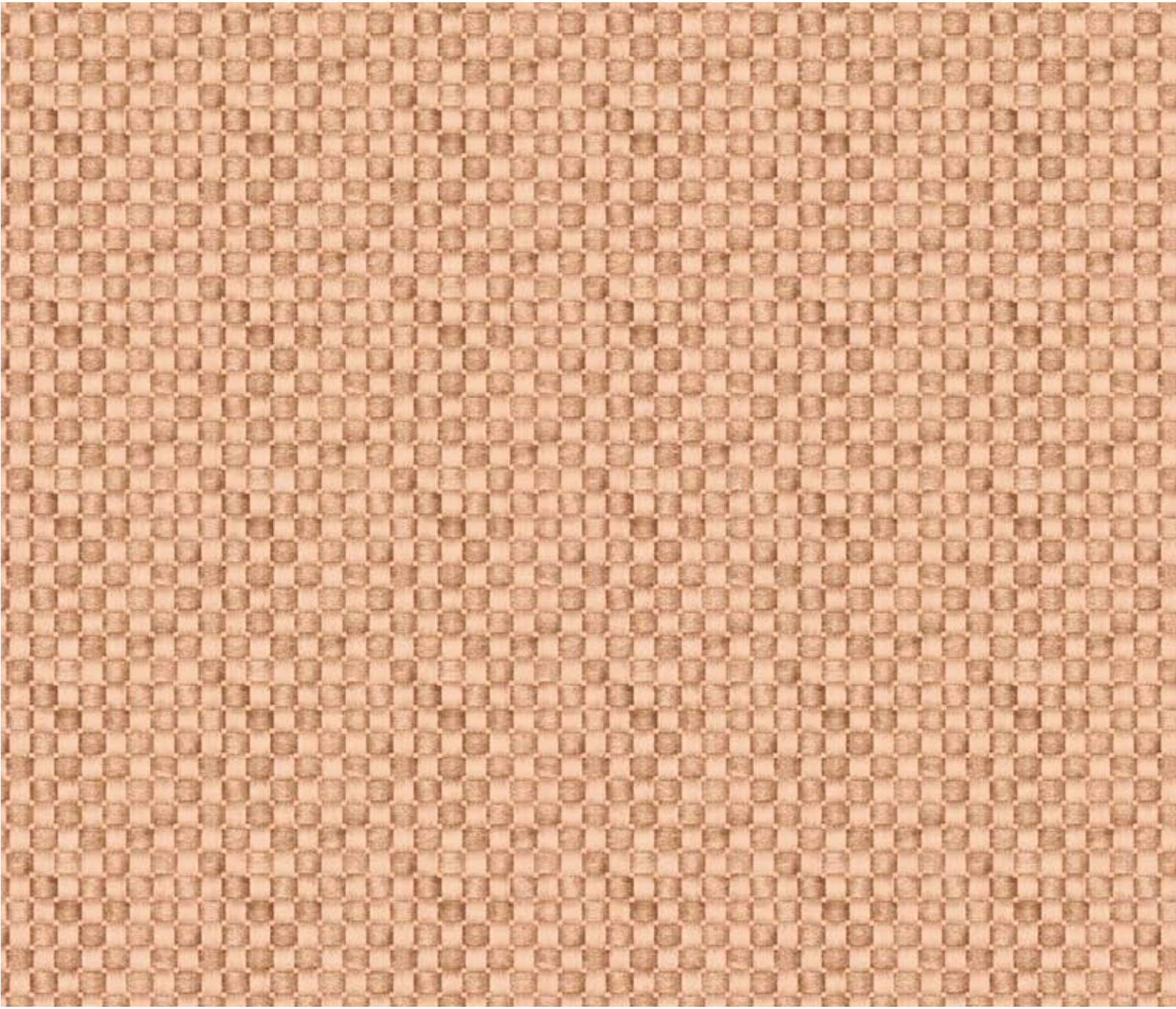


**COLONIAL BEECH** 2103 / SD





BEECH FUSION.....  
1978 / SD



BEECH FUSION 1978 / SD



# MIXED WOOD



**CLASSIC CREAM** 2043 / SD



**CHERRY LIGHT** 2012 / SD

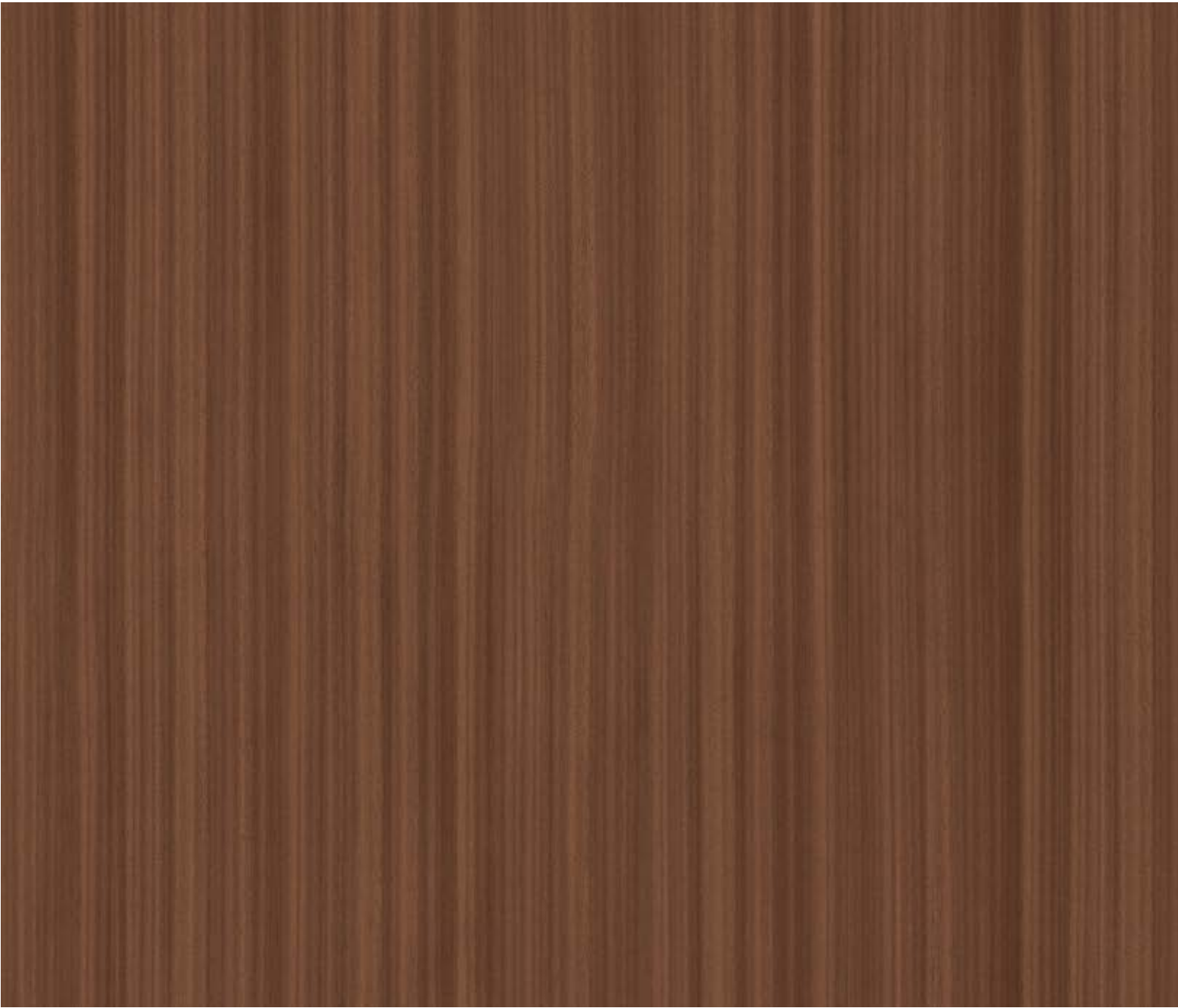


**CLASSIC BAMBOO** 2006 / SD





ICE SAPELE 2119 / SD



SOFT SAPELI 2016 / SD

# PLANKED WOOD



CANARY LINE 2062 / SD

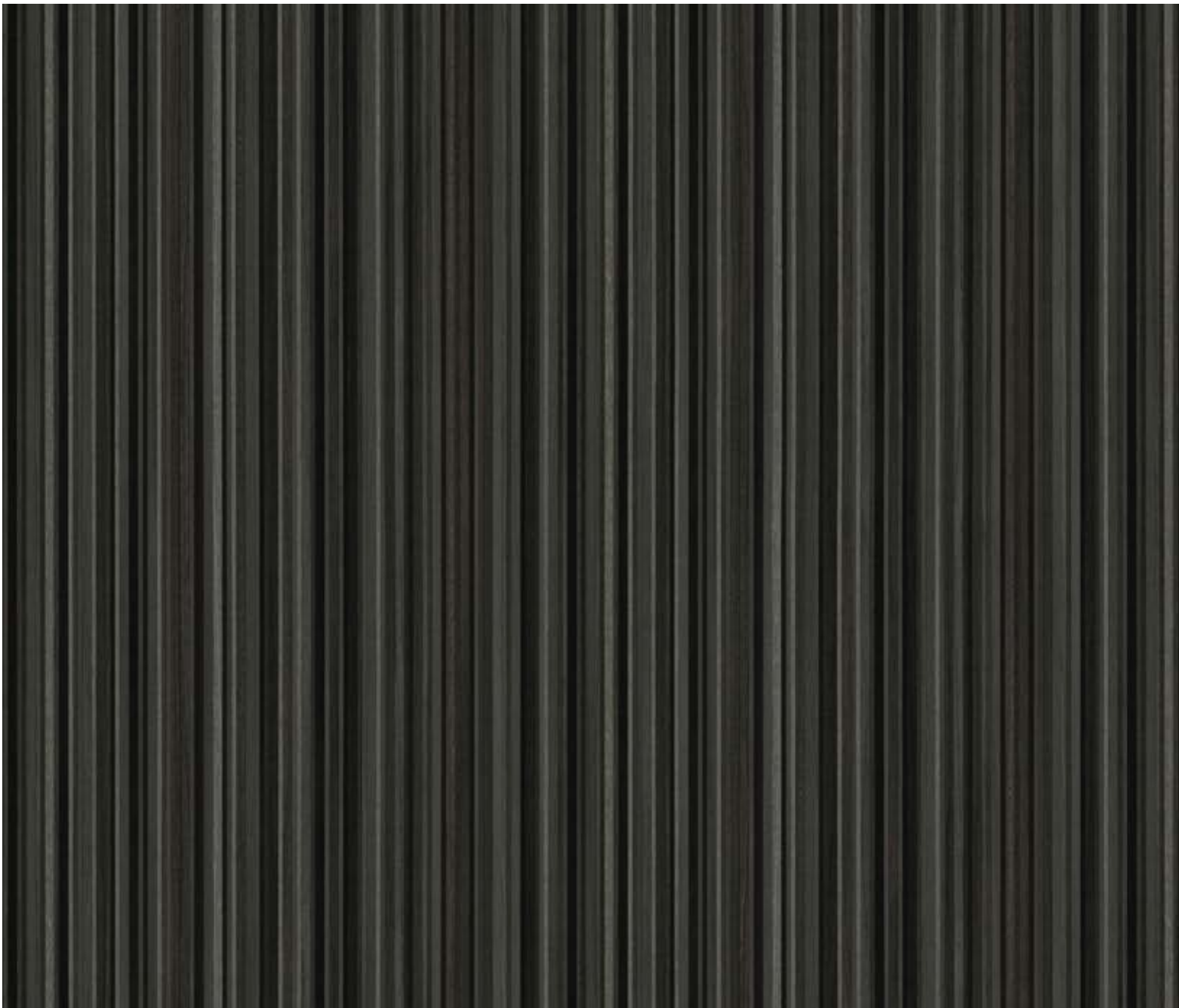


LIGHT TUSCANY 2045 / SD



PLANKED WOOD 2141 / SD

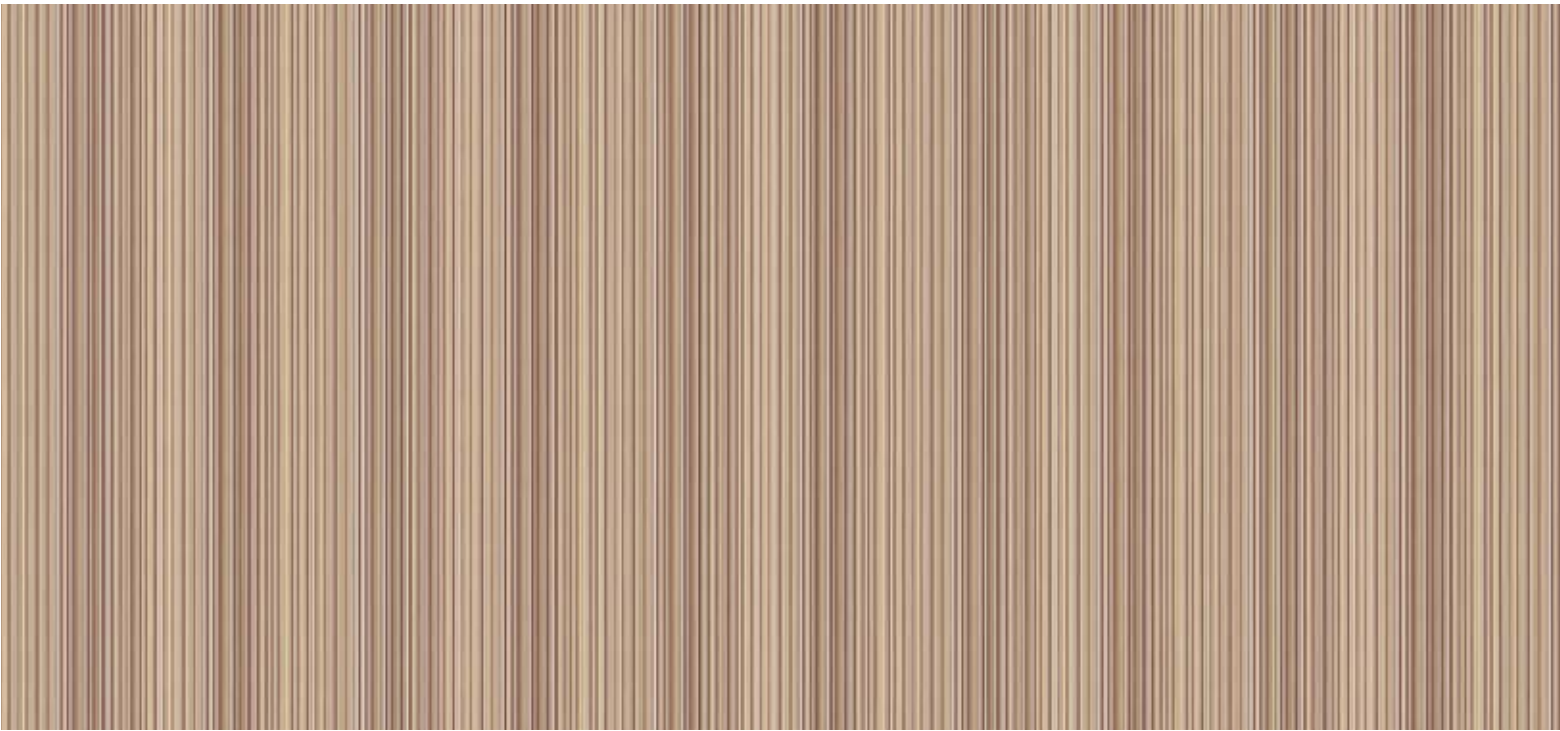




PLANKED CHARCOAL 2142 / SD



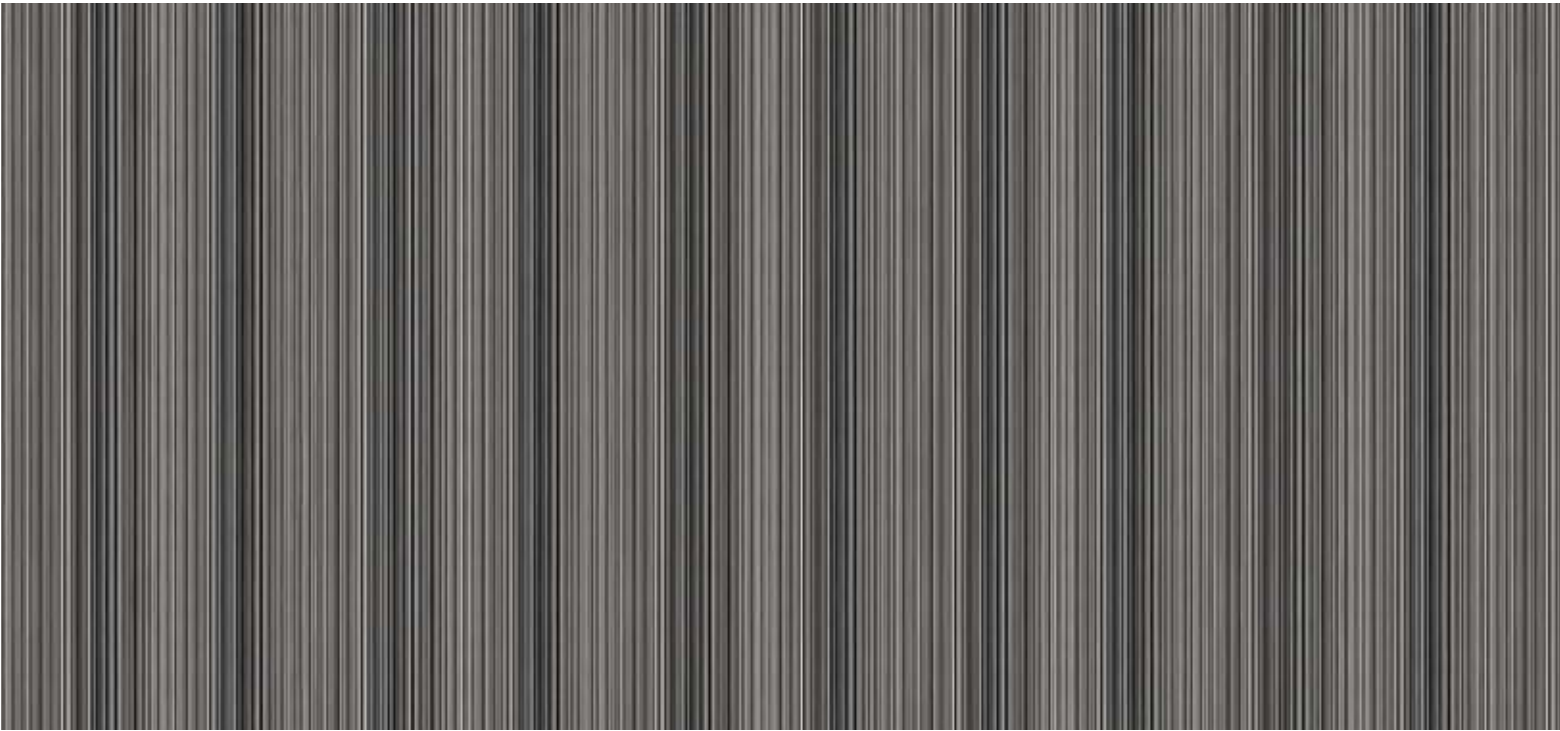
..... PLANKED CHARCOAL  
2142 / SD



COSMIC DESERT 2154 / SD



COSMIC OLIVA 2153 / SD



COSMIC ZEBRA 2156 / SD





**COSMIC GLACIER** 2152 / SD



**FINE EUROLINE** 2145 / SD



**BLACK MAKASAR** 2040 / SD

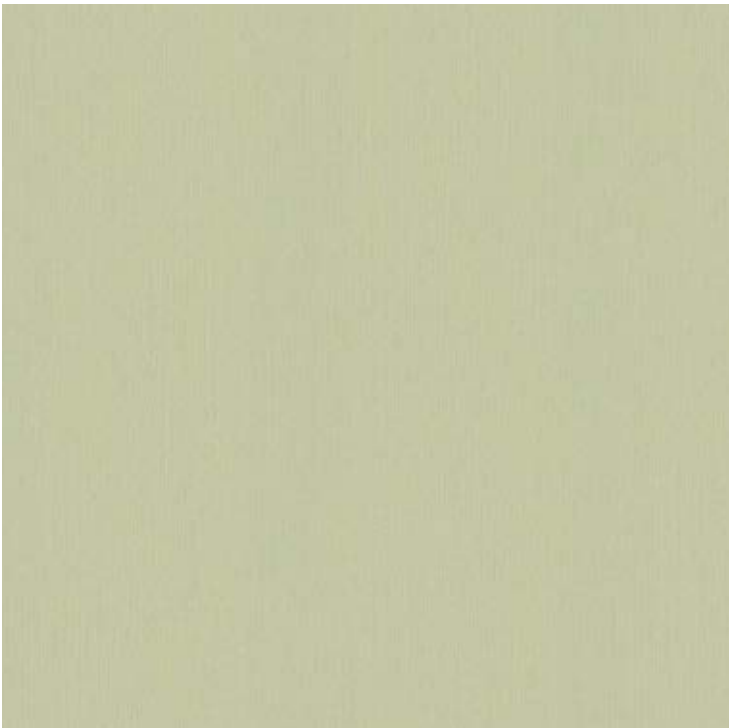


**SOFT LIMBA** 2149 / SD

# WENGE



**CONDENSE WENGE** 1946 / SD



**VICTORIA WENGE** 2122 / SD



**NATURAL WENGE** 2138 / SD



**STORK WENGE** 1943 / SD





TWILIGHT WENGE 2024 / SD



TWILIGHT WENGE .....  
2024 / SD





**BLACK WENGE** 1995 / SD



**TUNDRA WENGE** 1961 / SD



# REAL FABRICS



**SAW CUT 2135 / SD**

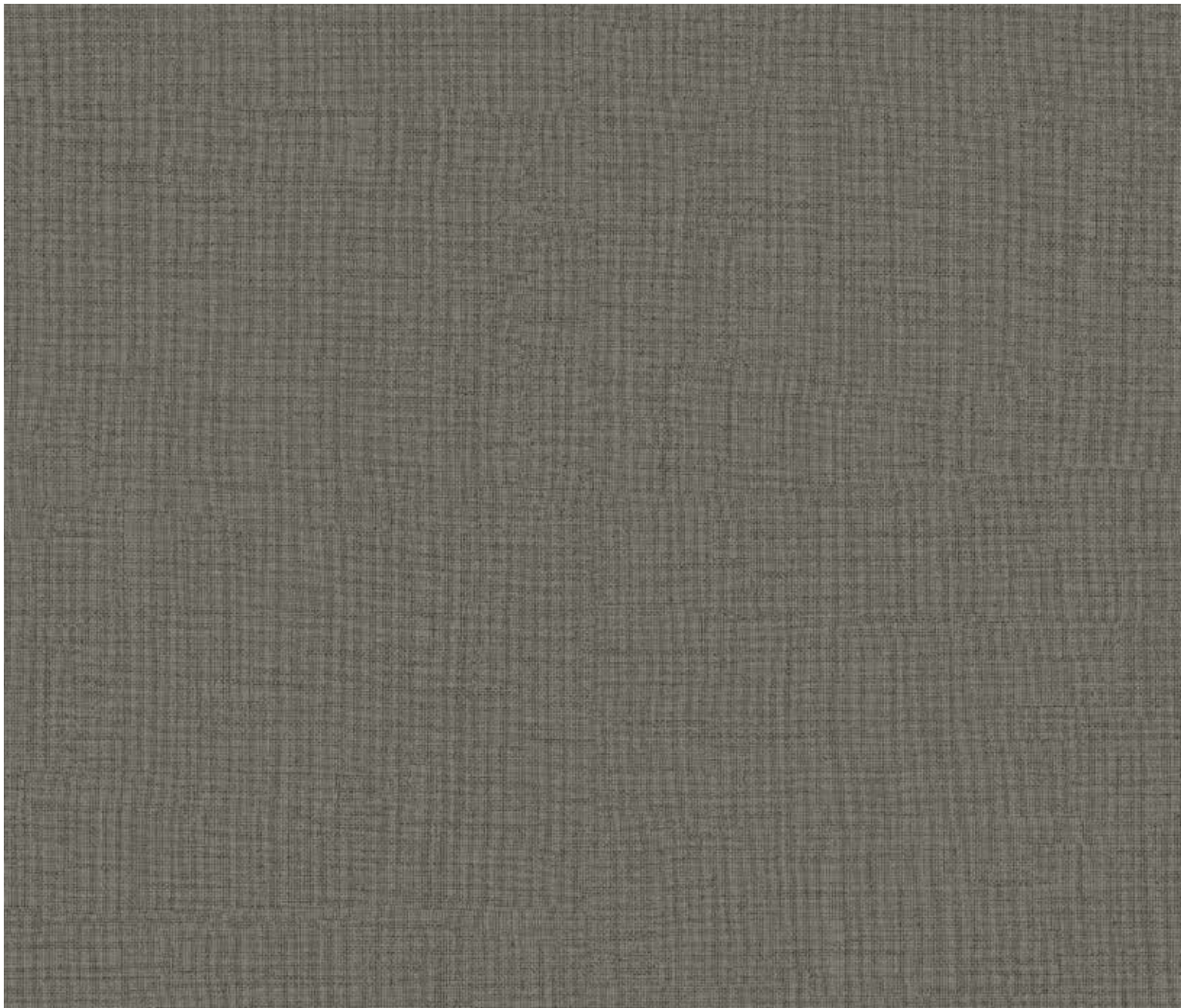


**SAW CUT GRAPHITE 2136 / SD**



**TWEED GREY 1353 / SD**



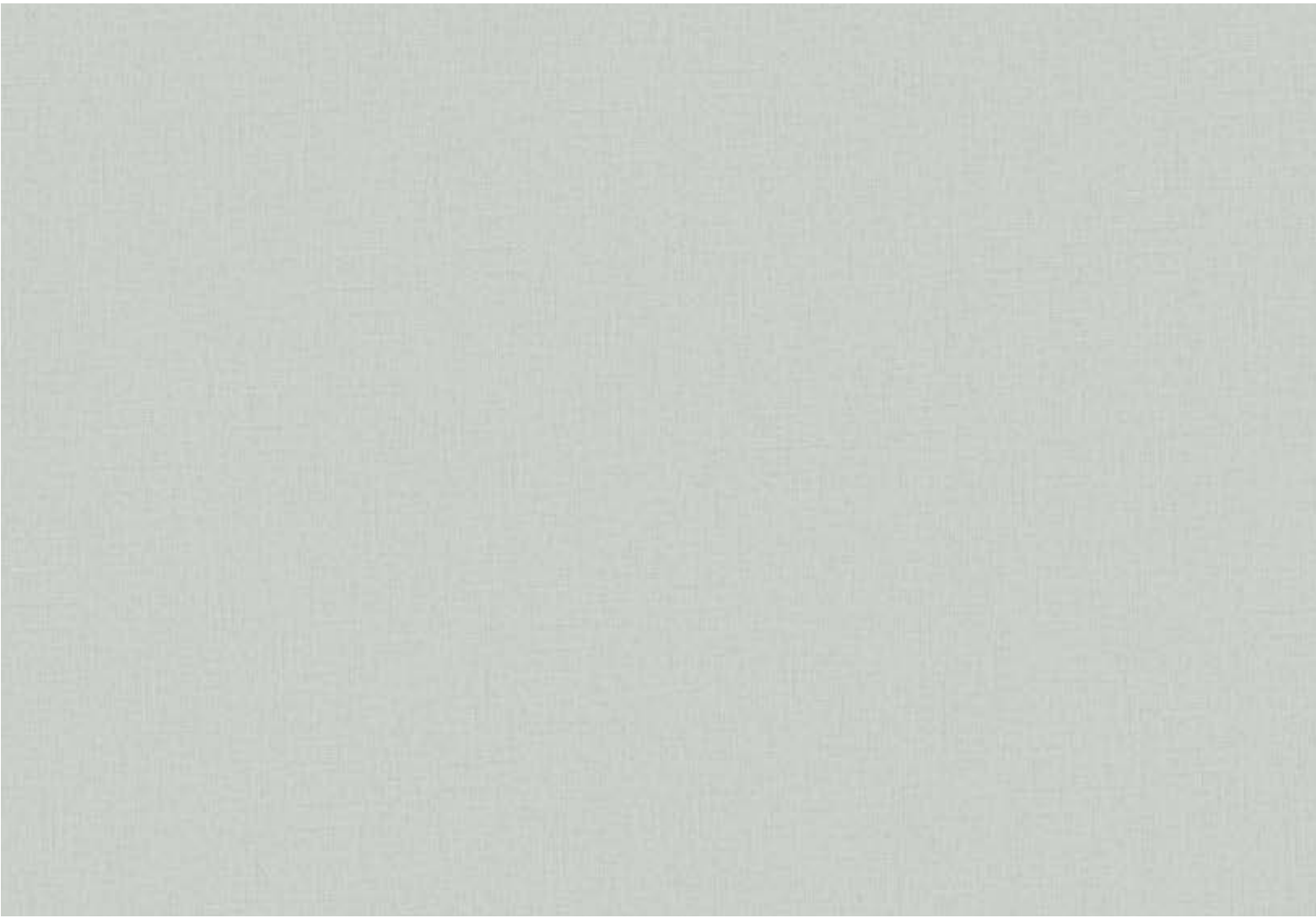


TWEED DARK 1354 / SD

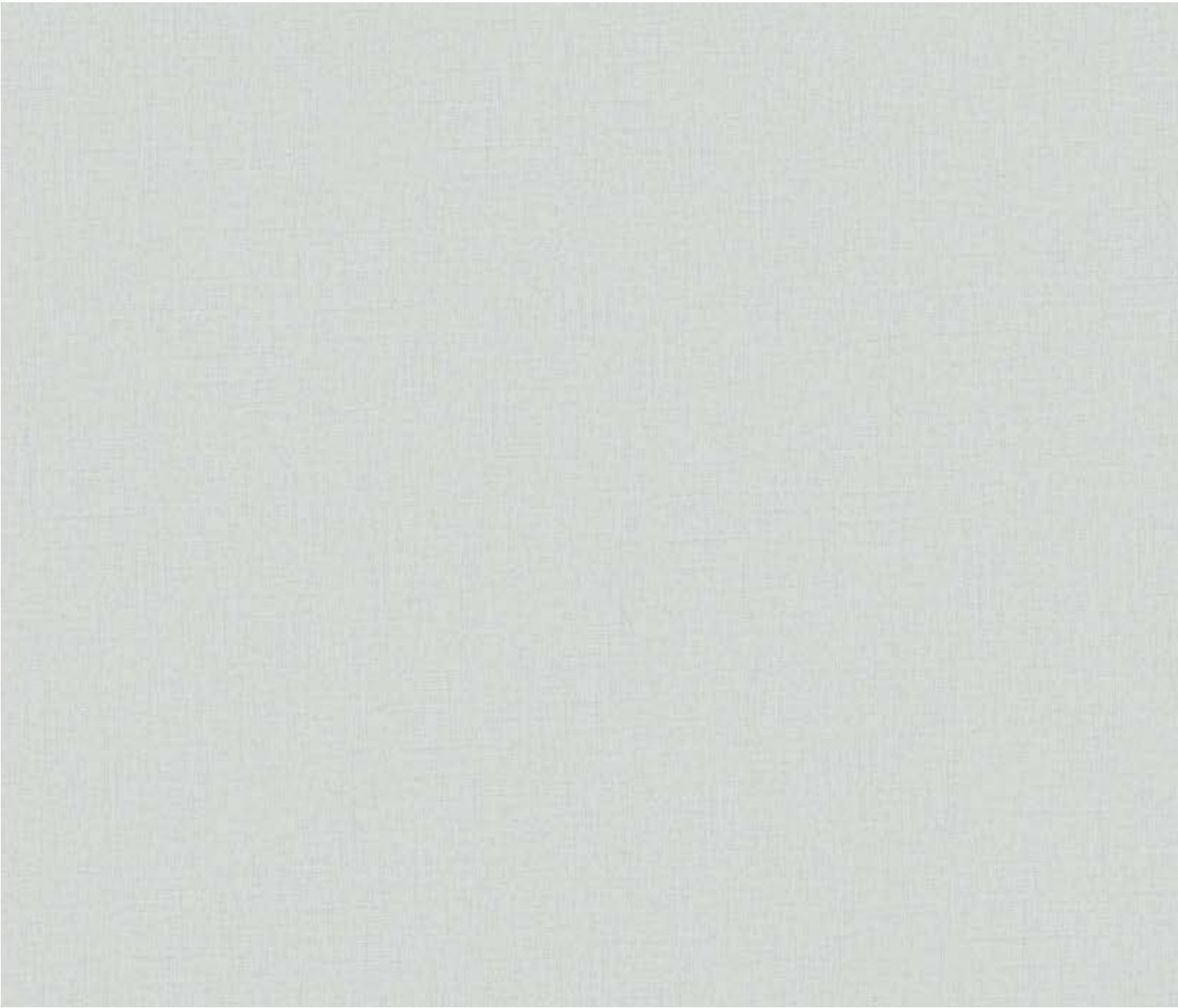


TWEED DARK 1354 / SD





**NEW** GREY FABRIC 1399 / SD



**NEW** OFFWHITE FABRIC 1398 / SD

# BOARD & METAL



♦----- SILVER METAL  
9598 / SD



CHALK



MARKER



SILVER METAL 9598 / MT



# PRODUCT PORTFOLIO



## Decorative Laminates

Stylam Decorative Laminates are specially designed laminate sheets of classy brown Kraft papers and decorative printed papers fused together using pressure & heat. These decorative sheets are used to add stylish finishes to furniture items, cabinets, counters, worktops and other installations and also for wall paneling.



## Post Forming Laminates

Stylam post forming laminate range has been exclusively designed for usage on vertical and horizontal interior surfaces, where the laminate is required to roll in a simple radius over the edges of substrate. With added flexibility, malleability and excellent thermoforming properties for forward and reverse bending applications, Stylam Post Forming Laminate enhances the decorative property.



## Industrial Laminates

Stylam Industrial Laminate Panels are available in the options of all brown core, all black cores and sandwiched design core. The Industrial Laminate panels are formulated with inner core of celluloid fibers impregnated with special thermosetting resins. High values of flexural strength and tensile strength ensures that these panels are suitable for saw cutting, drilling, machining and punching as per requirement.



## Smart Board (White Marker Board)

Stylam Chalk/Marker Board are made with special type of synthetic polymer which imparts durability to surface with easy cleaning of dry erase markers or wet erase markers. Chalkboard Laminate is the perfect solution for any space or application that demands a durable and affordable writing surface, and unlike other chalkboard surfaces, it requires no special maintenance.



## Unicore Laminates

Unicore Laminates are a unique combination of identical colors with layered decorative surfaces. Tastefully selected decorative papers for surface layers are infused with treated melamine resins. Same decorative papers are used as core layers that are infused with specially treated Amino resins. Unicore is a world where you could feel vibrancy of colors, flaunt your space with stunning & flawless Unicore surface that look uniform all across.



## Fire-Retardant Laminates

Fire Retardant exterior Laminate panels have extreme fire retardant quality which makes them difficult to ignite and have a low spread of flame. The evacuating time in case of fire is therefore prolonged. Imagine! The Laminate panels can be placed near fireplace or any other flame-prone area. Produced in lamination presses under great pressure and high temperature, these panels have excellent weather protection achieved with protective coating consisting of double hardened acrylic polyurethane resins.



## Digital Laminates

Digital Laminates are an easy, simple and reliable mode of artistic expression which offer architects & designers scope of imagination without boundaries. You can translate your imagination to something that you can see, touch & feel, this what sums up intention of Digital Laminates. These are customized printed laminates for interior décor, all we require is what look do you want, with themes ranging from nature, sports, food & romance you can choose from anything & could be applied on walls and partition walls, commercials, multipurpose furniture, stands and exhibitions, pictures, doors & many more areas.



## Translucent Laminates

Stylam Translucent Laminates are special panels comprises of two or more sheets of glass adhered together by heat and the use of pressure with interlayer. The result is a milky appearance designed for glazing applications. Some common uses for Stylam Translucent lam are showering screens, internal office partitioning and privacy screens, it's also used to soften incoming light through diffusion. Also, it can be manufactured with other interlayer color.



## Mirror Shield Laminates

Manufactured using real Aluminum, Stainless Steel and Copper foil bonded to a backing of Phenolic, resin impregnated Kraft paper, mirror shield laminates giving a durable, semi-rigid sheet for east fabrication and handling. Mirror Laminates are considered ideal for adding air to light duty horizontal or vertical applications.



### Magnetic Laminates

Widely used for vertical applications and as an accent to counter-tops, the decorative metal line is surprisingly adaptable and a virtually unbreakable addition to any commercial project. Ideal for a wide variety of applications in an environment such as retail, education, commercial & residential.



### Flicker Laminates

The range of flicker laminate is available in Silver & Copper Color. Also known as Glitter Laminates, these designs can be overlaid on any solid colors.



### Stylam Synchro Laminates

Stylam Synchro Laminates has real feel of wood and elegant natural look carrying all advantages of Laminate. In Synchro each Laminate surface texture is in synchronization with décor paper pattern, means the design you see is same you feel & experience.



### ANTI-BACTERIAL & ANTI-FUNGIE Laminates

Anti-bacterial & Anti-fungi Laminates are intended for application where there is a need for additional protection of the surface against bacteria/fungi. The decorative paper is impregnated with the special melamine resin and assembled with several layers of Phenolic resin treated Kraft. This laminate is easier to maintain as frequent cleaning is not required.



### High Gloss Laminates

Stylam gives much importance towards the right combination of resins, chemical additives, curing time & temperature, decorative paper, abrasion resistance overlay & high-quality steel press plates to give high gloss level to the laminate sheet.



### MAR (MR+) High Gloss Resistant Laminates

MR+ High Gloss technology gives excellent MAR Resistance thereby maintaining the gloss level three times longer than ordinary high gloss laminate. The Brilliance of Gloss shall stay through years without any sign of wearing out. MR+ High Gloss Laminate is resistant to stain and shows better result compared to any other HG Laminates.



### +Plus Guard Chemical ResistantLaminates

With excellent AB & AF properties, +Plus Guard Stylam panels will meet the demands in areas where chemicals & water are used more and where contamination is a genuine threat.



### Metallic Laminates

Stylam Metallic Laminates are top trusted product category among Architects & Designers. These HPL Decorative Metal Laminate sheets are made with a durable and flexible backing.



### Anti Finger Print Laminates

It is a type of High-Pressure Laminate that is used in the most demanding interior design applications. A unique technology during manufacturing ensures that finger marks are almost never seen thereby substantially reducing the effort required for care & maintenance. This stunning yet highly durable smooth surface is impact, scratch and heat resistant.



# PRODUCT PORTFOLIO



Crafted using the finest materials and highest quality fixtures and fitting especially for heavy traffic areas where functionality and durability matter the most, Cuboid caters to brilliant restroom applications in commercial, hospitality healthcare, education, transport sectors and a lot more. Cuboid has an exhaustive range that is stylish, sturdy yet affordable and is available in various formats, shapes and surface designs along with cubicle systems that are safe and needs specific. Its anti Bacterial and anti Fungi properties minimize the risk of spreading and transferring bacteria.

Stylam's Cuboid is India's first manufacturer with 1860 x 4320 mm Panel Size.

## FASCIA

EXTERIOR **CLADDING**



From inspiration to application, every aspect of 'exterior designing' is novel. While weather plays a crucial role, aesthetics drive the concept. Fascia, Stylam's exclusive exterior cladding range, exemplifies these qualities with its perfect amalgamation of tasteful demeanour and exemplary durability. They are manufactured under high pressure and temperature with special resins that provide effective weather protection without losing out on the laminates' character.

FASCIA also brings a unique ventilated façade system, which doesn't allow water, moisture or any other natural agent to find their way through the laminate installation. From patterns inspired by nature to designs complementing your interior, from plain and solid colours to completely abstract constructs, you have them all.



# Granex

SOLID SURFACES

---

Granex can be whatever you imagine it can be. Undulating, virtually seamless, organic shapes, bold effects of colour and translucency – if you can dream it, you can create it with Granex Acrylic Solid Surface; a brand new addition in the Stylam house. A signature innovation, Granex Solid Surface Design continues to evolve and to inspire. We collaborate with designers, architects, artists and fabricators around the globe to reach and develop new creative heights with this extraordinarily impactful material.

Choose from a wide range of trendsetting patterns and tones or even create your own custom colours. Engrave it. Colour it. Thermoform it.





# TECHNICAL SPECIFICATIONS

SL NO.	PROPERTIES	UNIT	SPECIFIED VALUE	TYPICAL LEADER VALUES
			IS 2046 -1995/ BS EN 438	
1.	Thickness	mm	0.8 ±0.10	0.8 ±0.10
2.	Resistance to immersion in boiling water			
	a) Mass increase	%, Max.	12	7.5
	b) Thickness increase	%, Max.	14	8.5
	c) Appearance	Grade, Min.	4	4
3.	Resistance to surface wear	Rev. Min.	350	370
4.	Resistance to dry heat at 180°C			
	a) Appearance: Gloss	Grade, Min.	3	4
	b) Appearance: Others	Grade, Min.	4	5
5.	Dimensional stability at elevated temperature	(L)%, Max.	0.625	0.40
		(T)%, Max.	1.05	0.85
6.	Resistance to impact by small diameter ball	N, Min.	20	30
7.	Resistance to scratching	N, Min.	2	2.6
	Resistance to staining:			
8.	a) Group 1 & 2	Grade, Min.	5	5
	b) Group 3 & 4	Grade, Min.	4	5
9.	Resistance to cigarette burns	Grade, Min.	3	4
10.	Resistance to steam	Grade, Min.	4	5
10.	Resistance to colour change in			
	a) Xenon arc Light	Grade, Min.	6	6
	b) Enclosed Carbon Arc light	Grade, Min.	5	5

Note: Unless otherwise specified, all samples are considered as SUEDE Finish.



# INDEX

DESIGN NO.	DESIGN NAME	FINISH CODE	PAGE NO.
MIRROR SOLIDS			
101	Azure White	MI	01
111	Sandal White	MI	01
142	Black Magic	MI	02
194	Sunny Gold	MI	01
195	Swadeshi Green	MI	01
529	Royal Ink	MI	01
570	Pink Blossom	MI	02
572	Robinhood Red	MI	02
574	Queen Magenta	MI	02
575	Dark Fantasy	MI	02
1005	Creamy White	MI	01
1055	Floro Orange	MI	02
	MIRROR: WOODGRAIN		
1943	Stork Wenge	MI	03
1970	Mysteak	MI	08
1982	Chocolate Teak	MI	04
1992	Oak Chamony	MI	08
2024	Twilight Wenge	MI	03
2030	Orchard Stripes	MI	06
2103	Colonial Beech	MI	05
2109	Euro Line	MI	04
2119	Ice Sapele	MI	05
2121	Arosa Pine	MI	07
2145	Fine Euroline	MI	07
2147	Coco Wood	MI	06
2149	Soft Limba	MI	06
2154	Cosmic Desert	MI	06
2415	Gold Urban Tree	MI	03
2416	Light Urban Tree	MI	03
	CYPRUS		
2457	Auriga Teak	CY	11
2459	Gemini Teak	CY	10
2460	Cocoa Teak	CY	11
2461	Hydra Teak	CY	10
	SCRIPT		
1937	Willow Oak	ST	12
1970	Mysteak	ST	12
2023	Dutch Oak	ST	12
2138	Natural Wenge	ST	12
	GALEGO		
2108	Wild Wood	GG	13
2128	European Cherry	GG	13
2144	Colombia Walnut	GG	13
2157	Ontario Walnut	GG	13
2174	Zebra Wood	GG	13
	CUBIC		
142	Black Magic	CB	14
1005	Creamy White	CB	14
2033	Maple Magic	CB	14
2062	Canary Line	CB	14
2157	Ontario Walnut	CB	14
	SATIN WEAVE		
101	Azure White	SW	15
142	Black Magic	SW	15
572	Robinhood Red	SW	15
1005	Creamy White	SW	15
	DECO		
1992	Oak Chamony	DC	16
2017	Cherry Teak	DC	17
2031	British Walnut	DC	16
2033	Maple Magic	DC	17
2094	Charcoal Teak	DC	16
	RING		
111	Sandal White	RN	18
142	Black Magic	RN	18
572	Robinhood Red	RN	18
2000	Flower Wenge	RN	18
	BROCADE		
1005	Creamy White	BC	19
1353	Tweed Grey	BC	19
1354	Tweed Dark	BC	19
2033	Maple Magic	BC	19
2038	Noble Linosa	BC	19
	WAVES		
142	Black Magic	WV	20
575	Dark Fantasy	WV	20
1005	Creamy White	WV	20
1992	Oak Chamony	WV	21
2015	Rusty Walnut	WV	22
2152	Cosmic Glacier	WV	21
	PEARL		
111	Sandal White	PL	23
570	Pink Blossom	PL	23
2119	Ice Sapele	PL	23

DESIGN NO.	DESIGN NAME	FINISH CODE	PAGE NO.
SHEEN			
111	Sandal White	SH	25
142	Black Magic	SH	25
570	Pink Blossom	SH	25
575	Dark Fantasy	SH	25
2121	Arosa Pine	SH	25
	BAMBOO		
1992	Oak Chamony	BB	26
2109	Euro Line	BB	26
2141	Planked Wood	BB	26
2142	Planked Charcoal	BB	26
	CROSS STREAKS		
1972	Walnut Cross	CS	27
2062	Canary Line	CS	27
2414	Kona Wood	CS	27
2415	Gold Urban Tree	CS	27
2416	Light Urban Tree	CS	27
	WINNING STREAKS		
2191	Tiger Skin	WS	29
2194	Persian Vertical Wood	WS	29
2406	Brown Wood Log	WS	29
2415	Gold Urban Tree	WS	30
2416	Light Urban Tree	WS	29
	WAVES HORIZONTAL		
101	Azure White	WH	32
572	Robinhood Red	WH	32
1946	Condense Wenge	WH	32
1963	Precious Pine	WH	31
2044	Noble Teak	WH	32
2094	Charcoal Teak	WH	32
	CAMO		
539	Dark Chocolate	CM	33
1005	Creamy White	CM	33
1017	Jaisalmer Brown	CM	33
2033	Maple Magic	CM	33
2119	Ice Sapele	CM	33
	SUEDE: SOLIDS PLAIN		
101	Azure White	SD	34
S-103	Super White	SD	34
111	Sandal White	SD	34
120	Alumina Grey	SD	34
142	Black Magic	SD	34
193	Magic Move	SD	34
194	Sunny Gold	SD	34
195	Swadeshi Green	SD	34
529	Royal Ink	SD	34
539	Dark Chocolate	SD	34
564	Polar Blue	SD	34
566	Twilight Blue	SD	34
570	Pink Blossom	SD	34
571	Classic Saffron	SD	34
572	Robinhood Red	SD	34
574	Queen Magenta	SD	34
575	Dark Fantasy	SD	34
1005	Creamy White	SD	34
1055	Floro Orange	SD	34
1056	Navy Blue	SD	34
	SUEDE: OAK		
1937	Willow Oak	SD	37
1965	Dense Oak	SD	37
1992	Oak Chamony	SD	37
2023	Dutch Oak	SD	36
2131	Oak Bright	SD	37
2132	Genus Oak	SD	37
	SUEDE: WALNUT		
1972	Walnut Cross	SD	41
1981	Orlando Walnut	SD	38
1991	Tropical Walnut	SD	39
1994	Canadian Walnut	SD	39
2015	Rusty Walnut	SD	41
2028	Classic Walnut	SD	39
2031	Rusty WalnutBritish Walnut	SD	40
2109	Euro Line	SD	41
2134	Fancy Umber	SD	41
2144	Colombia Walnut	SD	39
2147	Coco Wood	SD	40
	SUEDE: TEAK DELIGHT		
1959	Storm Teak	SD	43
1970	Mysteak	SD	44
1971	Shalimar Teak	SD	42
1973	Shine Teak	SD	44
1982	Chocolate Teak	SD	44
2017	Cherry TeakThai Teak	SD	46
2032	Fuagwa	SD	44
2044	Noble Teak	SD	42
2094	Charcoal Teak	SD	46
2123	Burma Teak	SD	45



# INDEX

DESIGN NO.	DESIGN NAME	FINISH CODE	PAGE NO.
SUEDE: TEAK DELIGHT			
2133	Fancy Wood	SD	46
2137	Thai Teak	SD	43
2148	Wild Coco	SD	46
2191	Tiger Skin	SD	42
2194	Persian Vertical Wood	SD	42
SUEDE: MAPLE			
1968	Golden Maple	SD	47
2002	Creamy Maple	SD	47
2030	Orchard Stripes	SD	47
2051	Chest Nut	SD	47
SUEDE: PINE			
1963	Precious Pine	SD	48
1993	Choco Pine	SD	48
2025	Light Pine	SD	48
2042	True Pine	SD	48
SUEDE: BEACH			
1916	Golden Beech	SD	49
1954	Brownly Beech	SD	49
1978	Beech Fusion	SD	50
1989	Japan Beech	SD	49
2103	Colonial Beech	SD	49
SUEDE: MIXED WOOD			
2006	Classic Bamboo	SD	51
2012	Cherry Light	SD	51
2016	Soft Sapeli	SD	52
2043	Classic Cream	SD	51
2119	Ice Sapele	SD	52
SUEDE: PLANKED WOOD			
2040	Black Makasar	SD	56
2045	Light Tuscany	SD	53
2062	Canary Line	SD	53
2141	Planked Wood	SD	53
2142	Planked Charcoal	SD	54
2145	Fine Euroline	SD	56
2149	Soft Limba	SD	56
2152	Cosmic Glacier	SD	56
2153	Cosmic Oliva	SD	55
2154	Cosmic Desert	SD	55
2156	Cosmic Zebra	SD	55
SUEDE: WENGE			
1943	Stork Wenge	SD	57
1946	Condense Wenge	SD	57
1961	Tundra Wenge	SD	59
1995	Black Wenge	SD	59
2024	Twilight Wenge	SD	58
2122	Victoria Wenge	SD	57
2138	Natural Wenge	SD	57
SUEDE: REAL FABRICS			
1353	Tweed Grey	SD	60
1354	Tweed Dark	SD	61
1398	Off white Fabric	SD	62
1399	Grey Fabric	SD	62
2135	Saw Cut	SD	60
2136	Saw Cut Graphite	SD	60
BOARD & METAL			
	Chalk	SD	63
	Marker	SD	63
9598	Silver Metal	SD	63



STYLAM INDUSTRIES LTD.

**CORPORATE OFFICE**

SCO 14, Sector 7- C, Madhya Marg  
Chandigarh (UT) 160 019  
Ph: 0172 -5021555, 5021666  
E-mail: [info@stylam.com](mailto:info@stylam.com),  
[inquiry@stylam.com](mailto:inquiry@stylam.com)

**WORKS**

Plot No. 192-193, Industrial Area  
Phase-1, Panchkula (Haryana)  
Ph: 0172-2563907, 5048587, 2565387

Village Manak Tabra towards raipur rani,  
Mattewala Chowk, Near Soda Wala Baba  
Mandir, Panchkula, Haryana

---

**KOLKATA**

Vill-Bansai Dakshin P.O.-Raghunathpur  
Coal Dam Ps: , Dankuni Distt- Hoogly  
712247-Kolkata

**MUMBAI**

Godown No.7-8 Ground Floor P-5  
Prithvi Complex , Village Kalher Taluka  
Bhiwandi Dist.Thane, 421302-Mumbai

**BANGALORE**

No. 2, SY. No. 11& 09, Panthara  
Playa, Parmod, Layout  
560026-Bangalore

Toll Free No: **1800 120 0054**. SMS 'Stylam" on **56161**

