



**desire**

**senses**  
akustik<sup>+</sup>

## senses akustik<sup>+</sup>

built on the pillars of sustainability and smart living, we at senses akustik<sup>+</sup>, understand the need for personal, peaceful spaces amidst the cacophony around. with a vision to rid you of your noise pollution woes, we aspire to inspire with our extensive range of highly functional, lightweight acoustic panels, tiles, baffles, clouds and patterns that amplify your commercial, industrial and residential spaces.

at the heart of our company lies our ideology of 'kaizen' or 'continuous improvement, as we strive to redefine the environment with a positive impact. our manufacturing policy stands firm on the belief that staff safety, working conditions and social responsibility are of prime importance.

equipping our cortege with products that are noise-cancelling, easy-to-install, abide by manufacturing standards, designed with eco-friendly materials and blend in beautifully with every kind of interior decor, the range does complete justice to design and development. armed with a dedicated team of architects, technicians and r&d who endeavor to build on our achievements and develop products that make for superior solutions for serene interiors. all of which bear testimony to the fact that, be it your meetings or simply your 'me-time', senses akustik<sup>+</sup> shall take care of it all.



desire™, staying true to its name, delivers designer acoustics adorned with any and every kind of print that you may desire! from elaborate doodles that resonate with your thought-process to quotes that speak your brand language, desire™ encourages you to get those creative juices flowing and visually express yourself.

desire™

you can choose to print absolutely anything on the base, while opting for one of our exceptionally-performing acoustic backing options, that are sure to keep your privatespace, peaceful. apart from adding a modern vibe to the area with its myriad of designs and colours, the polyester-fibre panel offers higher sound diffusion thereby keeping noise at bay.

from wedding venues to workspaces and airports to auditoriums, these easily movable panels are ideal for every expanse where you need to break the monotony yet keep in tandem with your contemporary, quick-paced lifestyle. all you have to do is pick your design while our in-house teams take care of the rest.





## key features & benefits



choose from a gamut of colours and patterns that complement interiors



efficient in-house teams design, deliver and install your products in a fortnight



exceptional acoustic performance



designed with recycled, degradable material



causes no irritation or allergies



uv resistant paint contains no chemicals and doesn't fade



has a high nrc of 0.45 - 0.90

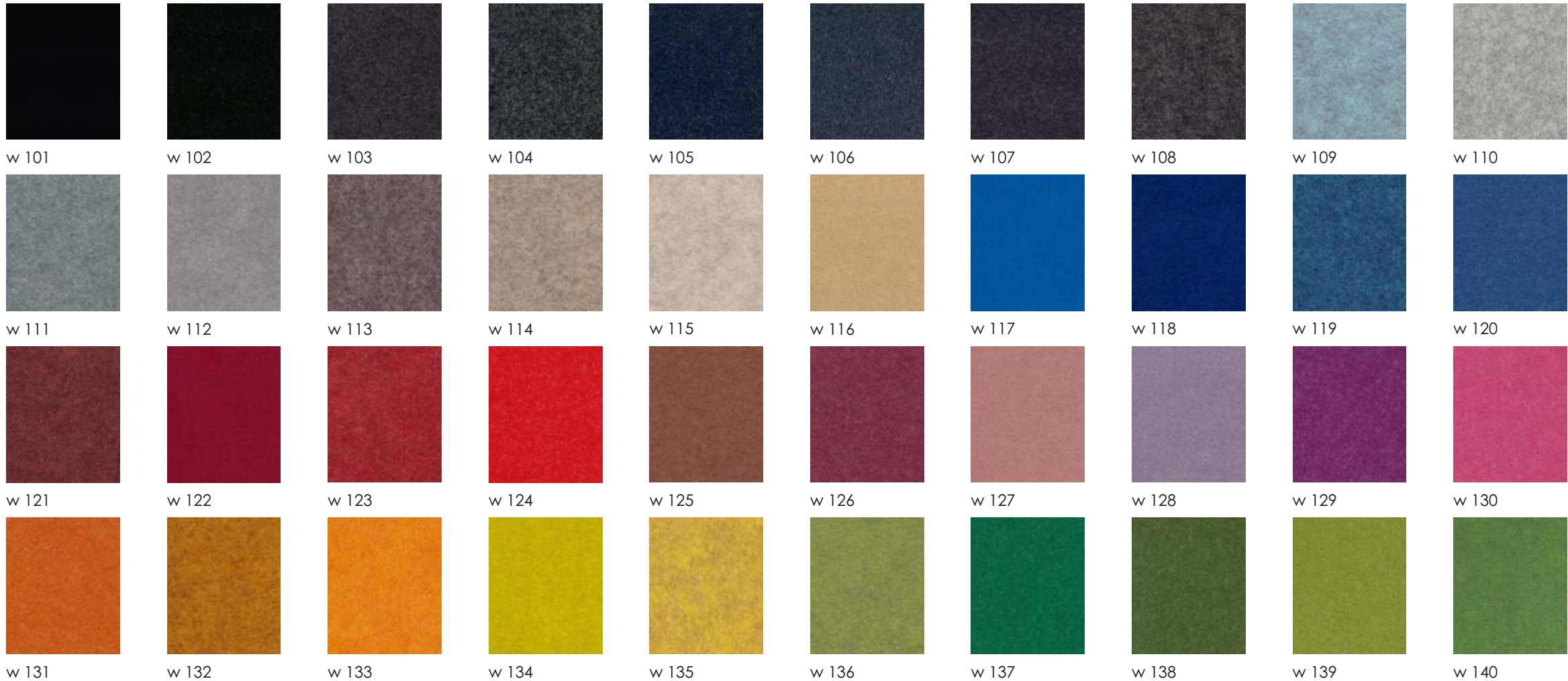


improves indoor air quality by preventing echoes



adds elegance to interiors whether used as a backdrop or a partition

# layer



**manufactured under strict iso 9001 quality control and iso 14001 environmental management systems, all our products are environmentally safe and exhibit excellent acoustic properties.**

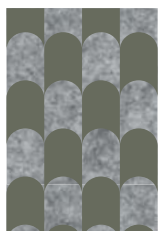
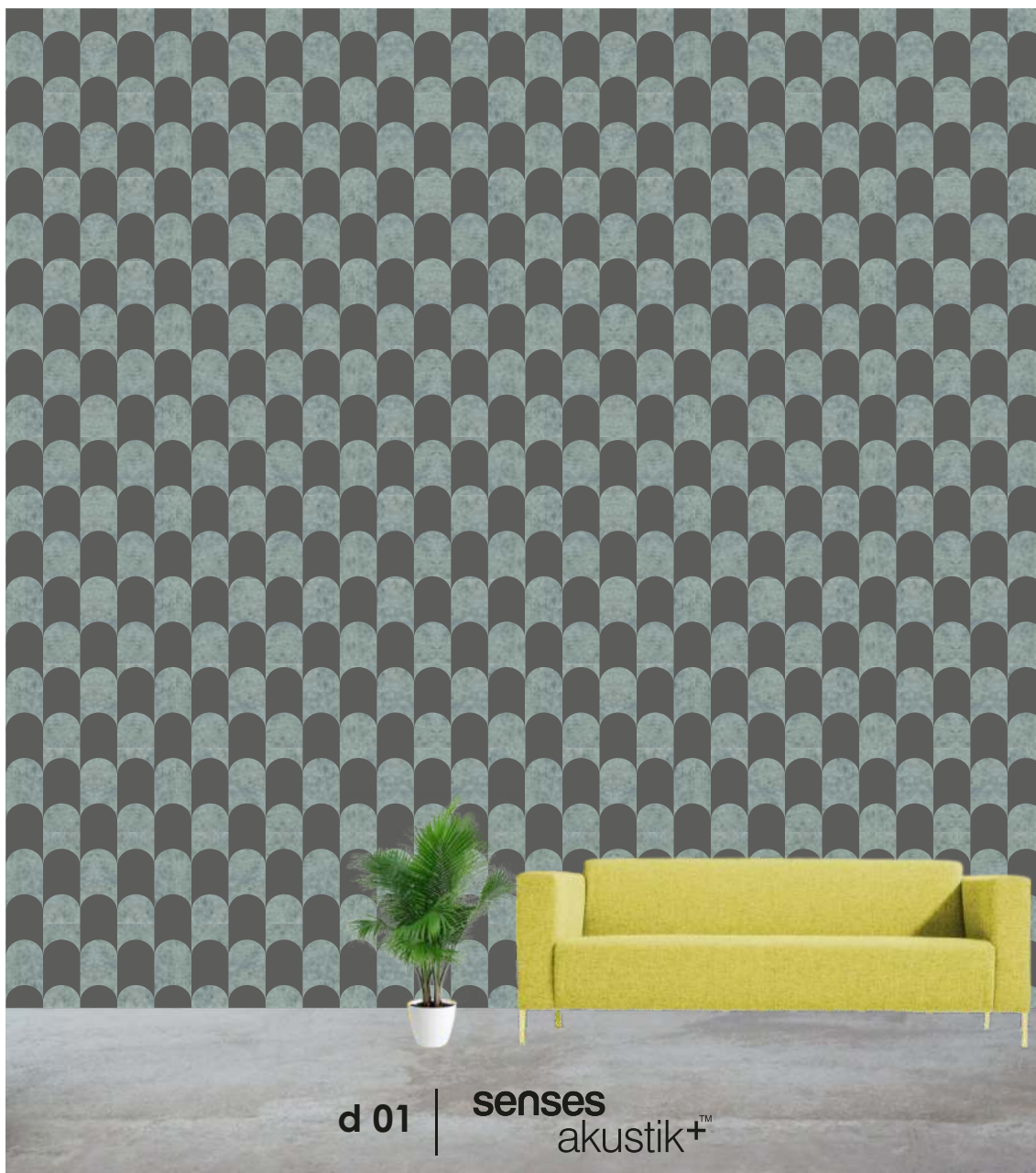
## product range

designed to be sound proof, desire™ is a high-performance product specially to make the walls, ceilings and partition to look modern and stylish. replacing fiberglass, every pattern is made from 100% polyester fiber which includes 85% regenerated fibers, recycled from plastic drinking water bottles making it environment-friendly.

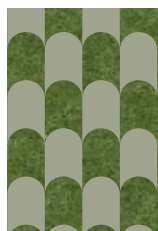
desire™ can be customised to any color from the ral chart. for designer prints, please refer to our design catalogue.

desire™ Embossed Panels are best suited for:  
walls  
ceilings





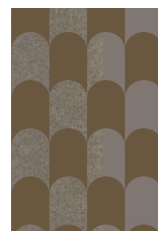
01 a



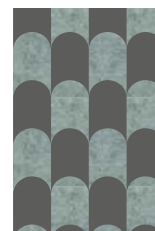
01 b



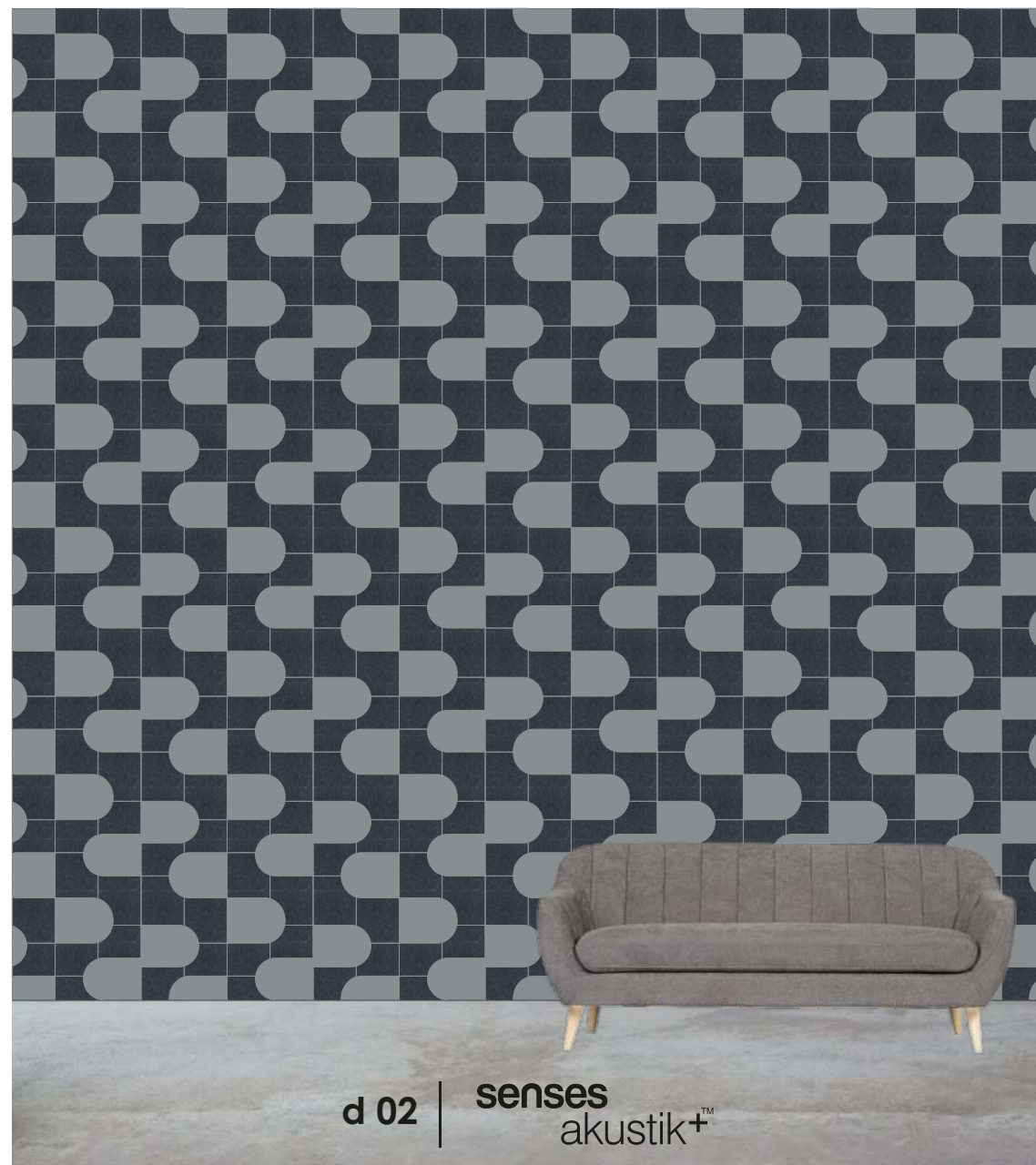
01 c



01 d



01 e



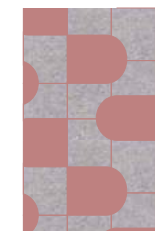
02 a



02 b



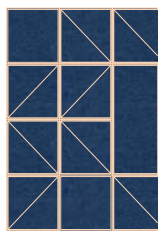
02 c



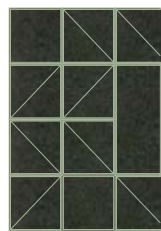
02 d



02 e



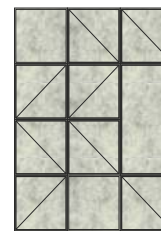
03 a



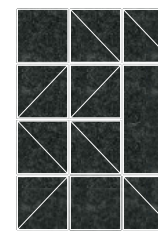
03 b



03 c



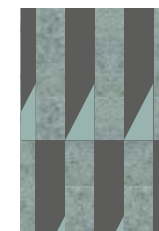
03 d



03 e



04 a



04 b



04 c



04 d



04 e





05 a



05 b



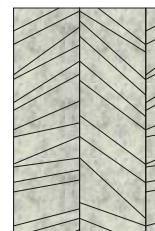
05 c



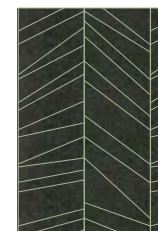
05 d



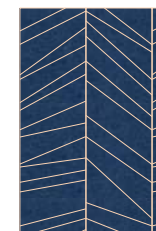
05 e



06 a



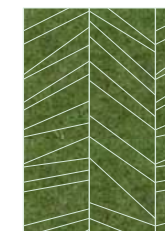
06 b



06 c

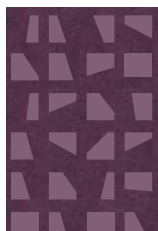


06 d



06 e

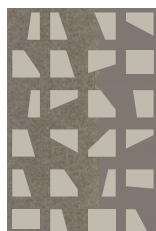




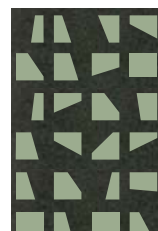
07 a



07 b



07 c



07 d



07 e



08 a



08 b



08 c



08 d



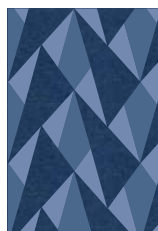
08 e



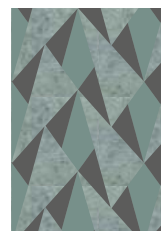
09 a



09 b



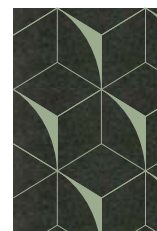
09 c



09 d



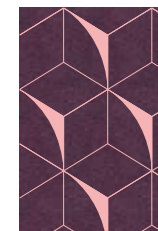
09 e



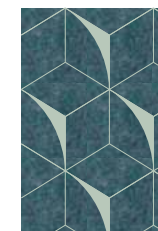
10 a



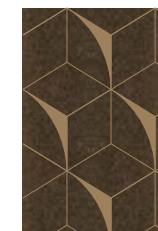
10 b



10 c



10 d



10 e





sustainability



water



energy



innovation



recycle

## technical specifications

### acoustic performance

in accordance with iso 354, desire™ has been tested for sound absorption in a reverberating room and exhibiting a 0.45 - 0.90 noise reduction coefficient (nrc). if you'd like a copy of the report, please contact your senses akustik+™ manager

### product specifications

|                               |   |                     |
|-------------------------------|---|---------------------|
| product name                  | — | desire™             |
| content                       | — | 100% wool felt      |
| panel dimensions              | — | 1220 X 2440 mm      |
| thickness                     | — | 09 mm, 12 mm, 24 mm |
| thickness/dimension tolerance | — | +10%, -10%          |

### fire and flammability test

|   |               |
|---|---------------|
| tested on :   |               |
| bca grop classifications                              | — as/nzs 3837 |
| surface burning characteristics of building materials | — astm e84    |
| flame spread index (class a, 0-25)                    | — 15          |
| smoke developed index ( class a, 0-450)               | — 115         |

## |go eco

### environmental safety

we at senses akustik+™ understand how important environmental consciousness is. which is why, our complete desire™ range is:

| designed with 100% polyester fibers, thermally bonded into thick panels

| wool felt is soft, highly durable and moisture resistant

| the screen does not corrode or decompose over time and is naturally resistant to termites, vermins and other insects

| unlike fiberglass, wool felt is a non-irritant, non-toxic, and free of formaldehyde

**|cii - greenpro certified product, type 1**

### product care

| in case of a spill, clean immediately with a damp cloth or with soap and water.

| avoid rubbing with excessive amount of water as this will affect the finish.

| carpet and fabric cleaners may be used as directed. blot with a clean, dry cloth after every application of solution.

| vacuum it to remove dust particles.

for further details, please check our senses akustik+™ maintenance manual





## applications

be it corporate offices of school classrooms, desire™ allows a level of customisation like never before. its customised designs, varying thickness and high acoustic quality assure versatility.

### **offices**

when confidential discussions are of prime importance, you undoubtedly need to shut out disturbance and get productive. desire™ ensures that it does the job of eliminating surrounding sound, so that you enjoy some peace and privacy.

### **schools**

collective sound of human voices can be detrimental to hearing and learning. let us help you out with keeping noise at bay, while students can concentrate without any disruptions.

### **home-theatre rooms**

because the only 'surround-sound' you should experience is the one being emitted from your home- theatre system's speakers.

### **banquets**

a perfect blend of class and functionality, desire™ is a must-have for often-noisy banquet halls to provide guests with the perfect experience for every occasion.

### **lobby areas**

they say first-impressions last a lifetime. be it an office building, home or a hotel lobby, welcome visitors with stylish design and soothing acoustics.

### **auditoriums**

create the perfect acoustic experience accompanied without compromising on trendy design to host any event, be it a movie or a concert, seamlessly.



# installation guide

although easy to install, these instructions are designed to assist you in installation. we recommend you speak to senses akustik+™ account manager for any support and guidance before you start the installation process.

before you start off with the installation, a couple of things to keep in mind:

- focus on the specification details in the instructions, in case of any confusion, please speak to your senses akustik+™ account manager before you proceed cutting the materials.
- we supply desire™ as 2.44m (+5mm) x 1.22m (+10mm). follow the easy guideline 'measure twice, cut once'.
- to avoid the appearance of colour variations, always install the desire™ pile with the fabric pile running in the same direction. the direction of the pile is marked on the back of the product in the form of arrows. we recommend that the pile runs down.
- if you're a little confused with the direction of the pile, you can also check it by running your hand up, then down the fabric. one should feel smooth and the other one should feel rough.
- for any application of adhesives, strictly read the product label or the technical sheet.
- desire™ is designed to be butt-joined. in case you are using rigid profiles, make sure you install it before adhering desire™ to the wall. for accurately measuring the fixation of h-section/ joiner profiles, a width of desire™ can be used. always make sure that there is a 70mm gap to each side of the profile while applying adhesive to allow tucking in.
- desire™ should be hung from the top down, smoothing outwards whilst maintaining pressure towards any joins. immediately after the drop is hung and in the correct position, roll with a hand roller to ensure adequate transfer of adhesive and a strong bond is formed. roll drops towards the butt-joins first, then roll the entire drop. small wallpaper and vinyl rollers must not be used. a wide roller approximately 100 -150mm is ideal.
- joins should have no visible compression marks, always vertical, clean and flat with no gaps.
- if there are any spills from adhesives or any fabric surface contamination, please use senses akustik+™ maintenance guide to immediately fix it.



## a few things to bear in mind while installing desire™ products:

### cutting

to get a perfect straight and smooth cut, always use a sharp utility knife and a straight edge.

### replacement

always replace any damaged or marked elements.

### fixtures

if there's any fixtures during the install process, any cover plates, light fittings, please remove it. once the work is done, replace plumb, square and true to line.

### clean up

always clean up as and when it's needed.

### on completion

leave work to the standard required by following procedures. keep desire™ secure, free of any bubbles/ wrinkles/ gaps and always smooth. make sure there's no adhesive on the surfaces and remove the unused materials or any waste from the site.

### service

for any help or guidance, do not hesitate to call your senses akustik+™ account manager or you can even visit our website.

# maintenance

desire™ by senses akustik+™ is highly durable and requires minimum care and effort to maintain its good looks. with it being termite-proof and not being able to absorb moisture, it does not rote or deteriorate over time and gives a clean indoor air quality. light vacuuming on a regular basis or using a mild detergent solution followed by rinsing and blotting for most marks should be enough to clear out any dust deposits.

however, in case of any spills or stains, please follow the guide below.

| code | method   |
|------|--|
| a    | use a clean, dry sponge or cloth to mop up the spill.  |
| b    | remove any excess with a blunt knife or similar  |
| c    | use carpet shampoo and sponge, while cleaning in a circular motion gradually moving from the periphery to the centre. clean with warm water and sponge and dry it up with a clean cloth. in case of any stain marks, clean with a sponge using one part household bleach and six parts clean water. finally rinse. |
| d    | blot lightly with a sponge and household dry cleaning fluid.   |
| e    | blot dry using methylated spirits and a sponge.  |
| f    | clean the stain with glycerine or petroleum jelly.   |
| g    | apply nail polish remover. the nail polish remover should not contain lanolin or be greasy.  |
| h    | sponge with turpentine (or substitute).  |
| i    | freeze with ice cubes and scrape with a blunt knife while cold.  |
| j    | clean with regular extractive carpet cleaner.  |
| k    | use circular cutter and remover damaged portion. re-glue new piece into place  |

| stain removal guide   | step 1              | step 2   | step 3 | step 4 |
|-----------------------|---------------------|----------|--------|--------|
| blood                 | a                   | c        |        |        |
| burn                  | k                   |          |        |        |
| chewing gum           | b                   | c        | d      | i      |
| chocolate             | b                   | c        | d      |        |
| cooking oils          | b                   | c        | d      |        |
| crayon/colour markers | b                   | c        | d      |        |
| drinks                | a                   | c        |        |        |
| dust/dirt             | vacuum, then j or c |          |        |        |
| fxcrement             | b                   | c        |        |        |
| grass                 | c                   |          |        |        |
| grease                | b                   | c        | d      |        |
| ink (ballpoint)       | d                   | e        |        |        |
| ink (fountain)        | a                   | c        |        |        |
| lipstick              | b                   | c        | d      | e      |
| mildew                | c                   |          |        |        |
| milk                  | a                   | e        |        |        |
| mud                   | b                   | c        |        |        |
| nail polish           | a                   | g        |        |        |
| oil                   | b                   | c        | d      |        |
| paint (water based)   | a                   | c        | f      |        |
| paint (oil based)     | a                   | c        | c      | c      |
| saucuses              | b                   | c        | d      | h      |
| shoe polish           | b                   | c        | d      |        |
| urine                 | a                   | c        |        |        |
| vomit                 | a                   | c        | d      |        |
| wine                  | a                   | add salt | c      | c      |



**senses**  
akustik+<sup>TM</sup>



[info@sensesakustik.com](mailto:info@sensesakustik.com)



[www.sensesakustik.com](http://www.sensesakustik.com)