



sculpt

senses
akustik+™

senses akustik⁺

built on the pillars of sustainability and smart living, we at senses akustik⁺, understand the need for personal, peaceful spaces amidst the cacophony around. with a vision to rid you of your noise pollution woes, we aspire to inspire with our extensive range of highly functional, lightweight acoustic panels, tiles, baffles, clouds and patterns that amplify your commercial, industrial and residential spaces.

at the heart of our company lies our ideology of 'kaizen' or 'continuous improvement, as we strive to redefine the environment with a positive impact. our manufacturing policy stands firm on the belief that staff safety, working conditions and social responsibility are of prime importance.

equipping our cortege with products that are noise-cancelling, easy-to-install, abide by manufacturing standards, designed with eco-friendly materials and blend in beautifully with every kind of interior decor, the range does complete justice to design and development. armed with a dedicated team of architects, technicians and r&d who endeavor to build on our achievements and develop products that make for superior solutions for serene interiors. all of which bear testimony to the fact that, be it your meetings or simply your 'me-time', senses akustik⁺ shall take care of it all.





sculpt[™]

functionality may come first, but when it's a matter of interiors, decor certainly reigns supreme. if you're trying to balance out practicality with pleasing interiors, we recommend you do it in style with sculpt[™].

sculpt[™] offers designer acoustics with embossed patterns, that give your space a sense of belonging. be it birds or beer mugs, squares or spheres, sculpt[™] adds aesthetics to your room while ensuring that the acoustic materials within do their job of eliminating background sound.

fabricated with eco-friendly polyester fibers, sculpt[™] complements your interiors with the plethora of colours it offers and is an ideal choice for partitions, walls and ceilings. you can choose to emboss a single panel or opt for an additional embossed layer that offers a higher diffusion level thereby blocking out further disturbance.

with an in-house design team that easily customizes our range of products, sculpt[™] successfully amalgamates art and acoustics while bringing in an element of simplicity and sophistication. all of this and more, makes it a preferred choice for schools, corporate spaces, banquet halls, theatres and probably every other enclosed space, designed.



what makes sculpt[™] stand out?

unique embossed panels: one-of-its-kind embossed patterns not only add elegance to your interiors, but the double-layered panel improves sound absorption as well.

easily fabricated and installed: our in-house design and installation team offers a fully integrated planning and fitting service, so that you can enjoy your private space, hassle-free.

freedom of choice: with so many colours and designs that give your space the much-desired customized touch, we promise you'd be spoilt for choice!

environment matters: we ensure that all our products are designed with the finest, eco-friendly polyester fibers and possess remarkable noise-absorption qualities.

key features & benefits



the embossed double layered panel
diffuses sound, reducing it further



efficient in-house teams design,
deliver and install your products
seamlessly



exceptional acoustic performance



designed with recycled, degradable
material



causes no irritation or allergies



uv resistant paint contains no
chemicals and doesn't fade



has a high nrc of 0.45 - 0.90



improves indoor air quality by
preventing echoes



adds elegance to interiors whether
used as a backdrop or a partition

product range

manufactured under strict iso 9001 quality control and iso 14001 environmental management systems, all our products are environmentally safe and exhibit excellent acoustic properties.

designed to be sound proof, sculpt[™] is a high-performance product specially to make the walls, ceilings and partition to look modern and stylish. replacing fiberglass, every pattern is made from 100% polyester fiber which includes 85% regenerated fibers, recycled from plastic drinking water bottles making it environment-friendly.

we currently offer 24 colors, to which any and every design of your choice can be customised.

sculpt[™] embossed panels are best suited for:

walls
ceiling applications
dividers

| color line



aqua



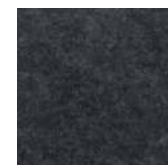
azuara



beton



cello



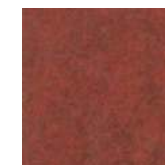
charcoal



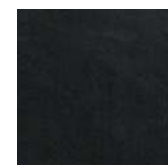
cobalt



crystal



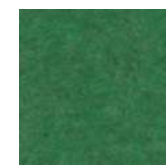
drab



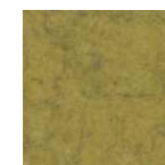
dusky



lead



leaf



lime



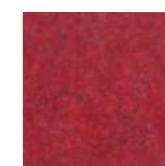
lush



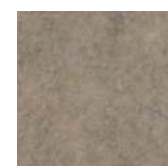
ochre



platinum



ruby



sepia



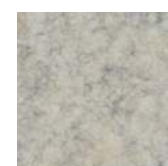
slate



somber



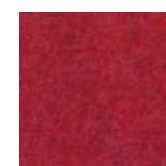
tango



taupe



umber



velvet

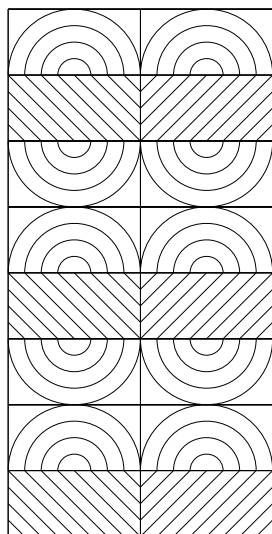


wine

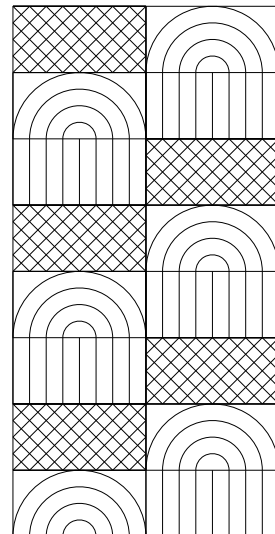
| design catalogue

any design of your choice can be customised to our range of color line.

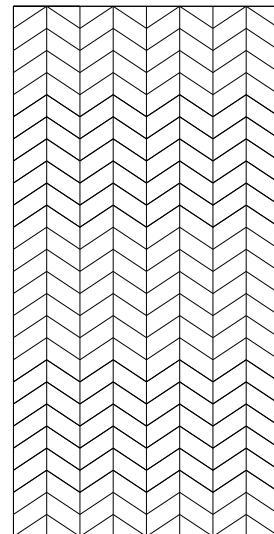
Please go through our design catalogue and contact our senses akustik⁺ manager for any customisation related guidance.



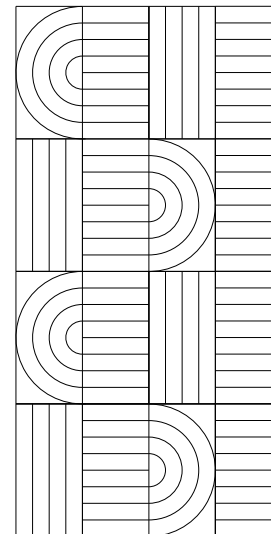
s 01



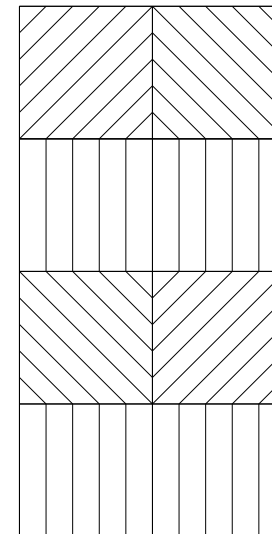
s 02



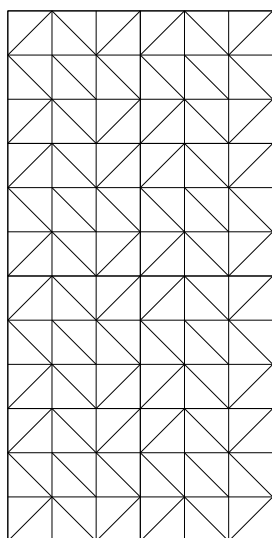
s 03



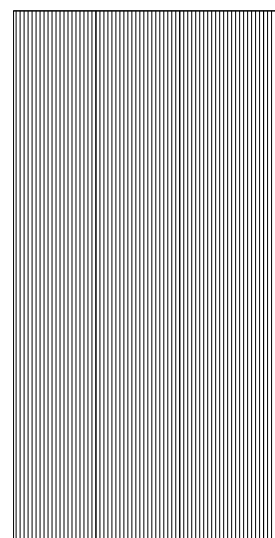
s 04



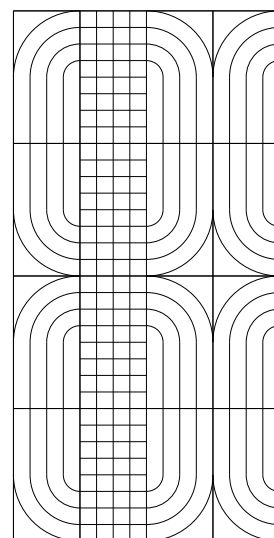
s 05



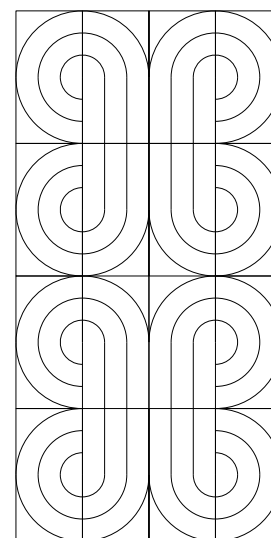
s 06



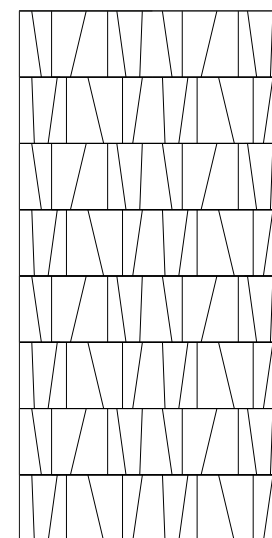
s 07



s 08

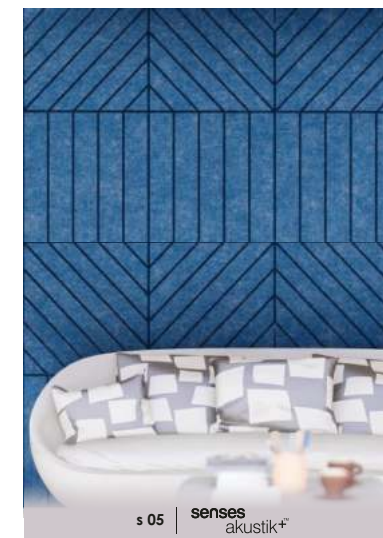


s 09



s 10

| design catalogue





sustainability



water



energy



innovation



recycle

technical specifications

acoustic performance

in accordance with iso 354, sculpt[™] has been tested for sound absorption in a reverberating room and exhibiting a 0.45 - 0.90 noise reduction coefficient (nrc). if you'd like a copy of the report, please contact your senses akustik⁺ manager

product specifications

product name	—	sculpt [™]
content	—	100% wool felt
panel dimensions	—	1220 X 2440 mm
thickness	—	12 mm, 24 mm
thickness/dimension tolerance	—	+10%, -10%

fire and flammability test

tested on :	
bca grop classifications	— as/nzs 3837
surface burning characteristics of building materials	— astm e84
flame spread index (class a, 0-25)	— 15
smoke developed index (class a, 0-450)	— 115



|go eco

environmental safety

we at senses akustik⁺™ understand how important environmental consciousness is. which is why, our complete sculpt[™] range is:

designed with 100% wool felt, thermally bonded into 9-30mm thick panels

wool felt is soft, highly durable and moisture resistant

the screen does not corrode or decompose over time and is naturally resistant to termites, vermins and other insects

unlike fiberglass, wool felt is a non-irritant, non-toxic, and free of formaldehyde

cii - greenpro certified product, type 1

product care

in case of a spill, clean immediately with a damp cloth or with soap and water.

avoid rubbing with excessive amount of water as this will affect the finish.

carpet and fabric cleaners may be used as directed. blot with a clean, dry cloth after every application of solution.

vacuum it to remove dust particles.

for further details, please check our senses akustik⁺™ maintenance manual



applications

while sculpt™ can be aesthetically appealing anywhere and everywhere, be it airports, banquet halls or public restrooms, we'd certainly recommend using them to reduce background noise in the following set-ups:

offices

when confidential discussions are of prime importance, you undoubtedly need to shut out disturbance and get productive. sculpt™ ensures that it does the job of eliminating surrounding sound, so that you enjoy some peace and privacy.

schools

collective sound of human voices can be detrimental to hearing and learning. let us help you out with keeping noise at bay, while students can concentrate without any disruptions.

home-theatre rooms

because the only 'surround-sound' you should experience is the one being emitted from your home-theatre system's speakers.

banquets

a perfect blend of class and functionality, sculpt™ is a must-have for often-noisy banquet halls to provide guests with the perfect experience for every occasion.

lobby areas

they say first-impressions last a lifetime. be it an office building, home or a hotel lobby, welcome visitors with stylish design and soothing acoustics.

auditoriums

create the perfect acoustic experience accompanied without compromising on trendy design to host any event, be it a movie or a concert, seamlessly.

installation guide

although easy to install, these instructions are designed to assist you in installation. we recommend you speak to senses akustik⁺™ account manager for any support and guidance before you start the installation process.

before you start off with the installation, a couple of things to keep in mind:

- focus on the specification details in the instructions, in case of any confusion, please speak to your senses akustik⁺™ account manager before you proceed cutting the materials.
- we supply sculpt[™] as 2.44m (+5mm) x 1.22m (+10mm). follow the easy guideline 'measure twice, cut once'.
- to avoid the appearance of colour variations, always install the sculpt[™] pile with the fabric pile running in the same direction. the direction of the pile is marked on the back of the product in the form of arrows. we recommend that the pile runs down.
- if you're a little confused with the direction of the pile, you can also check it by running your hand up, then down the fabric. one should feel smooth and the other one should feel rough.
- for any application of adhesives, strictly read the product label or the technical sheet.
- sculpt[™] is designed to be butt-joined. in case you are using rigid profiles, make sure you install it before adhering sculpt[™] to the wall. for accurately measuring the fixation of h-section/ joiner profiles, a width of sculpt[™] can be used. always make sure that there is a 70mm gap to each side of the profile while applying adhesive to allow tucking in.
- sculpt[™] should be hung from the top down, smoothing outwards whilst maintaining pressure towards any joins. immediately after the drop is hung and in the correct position, roll with a hand roller to ensure adequate transfer of adhesive and a strong bond is formed. roll drops towards the butt-joins first, then roll the entire drop. small wallpaper and vinyl rollers must not be used. a wide roller approximately 100 -150mm is ideal.
- joins should have no visible compression marks, always vertical, clean and flat with no gaps.
- if there are any spills from adhesives or any fabric surface contamination, please use senses akustik⁺™ maintenance guide to immediately fix it.



a few things to bear in mind while installing sculpt[™] products:

cutting

to get a perfect straight and smooth cut, always use a sharp utility knife and a straight edge.

replacement

always replace any damaged or marked elements.

fixtures

if there's any fixtures during the install process, any cover plates, light fittings, please remove it. once the work is done, replace plumb, square and true to line.

clean up

always clean up as and when it's needed.

on completion

leave work to the standard required by following procedures. keep sculpt[™] secure, free of any bubbles/ wrinkles/ gaps and always smooth. make sure there's no adhesive on the surfaces and remove the unused materials or any waste from the site.

service

for any help or guidance, do not hesitate to call your senses akustik⁺™ account manager or you can even visit our website.

maintenance

sculpt[™] by senses akustik⁺ is highly durable and requires minimum care and effort to maintain its good looks. with it being termite-proof and not being able to absorb moisture, it does not rote or deteriorate over time and gives a clean indoor air quality. light vacuuming on a regular basis or using a mild detergent solution followed by rinsing and blotting for most marks should be enough to clear out any dust deposits.

however, in case of any spills or stains, please follow the guide below.

code	method
a	use a clean, dry sponge or cloth to mop up the spill.
b	remove any excess with a blunt knife or similar
c	use carpet shampoo and sponge, while cleaning in a circular motion gradually moving from the periphery to the centre. clean with warm water and sponge and dry it up with a clean cloth. in case of any stain marks, clean with a sponge using one part household bleach and six parts clean water. finally rinse.
d	blot lightly with a sponge and household dry cleaning fluid.
e	blot dry using methylated spirits and a sponge.
f	clean the stain with glycerine or petroleum jelly.
g	apply nail polish remover. the nail polish remover should not contain lanolin or be greasy.
h	sponge with turpentine (or substitute).
i	freeze with ice cubes and scrape with a blunt knife while cold.
j	clean with regular extractive carpet cleaner.
k	use circular cutter and remover damaged portion. re-glue new piece into place

stain removal guide	step 1	step 2	step 3	step 4
blood	a	c		
burn	k			
chewing gum	b	c	d	i
chocolate	b	c	d	
cooking oils	b	c	d	
crayon/colour markers	b	c	d	
drinks	a	c		
dust/dirt	vacuum, then j or c			
fxcrement	b	c		
grass	c			
grease	b	c	d	
ink (ballpoint)	d	e		
ink (fountain)	a	c		
lipstick	b	c	d	e
mildew	c			
milk	a	e		
mud	b	c		
nail polish	a	g		
oil	b	c	d	
paint (water based)	a	c	f	
paint (oil based)	a	c	c	c
saucuses	b	c	d	h
shoe polish	b	c	d	
urine	a	c		
vomit	a	c	d	
wine	a	add salt	c	c

senses
akustik+TM



info@sensesakustik.com



www.sensesakustik.com